

KING'S
College

LONDON



Welcome to KING'S

**Creative Entrepreneurship:
leading the next generation**

**UNICA General Assembly
28-29 November 2019**



King's Innovation Institutes

Commercialisation Institute

Supports and accelerates innovation and commercialisation of life science research, engaging directly with companies that have relevant commercial interests.

Entrepreneurship Institute

Supports students entrepreneurial thinking, skills and experience through programmes such as King's 20 accelerator

Culture

Facilitates research & innovation between King's and the cultural sector

The Policy Institute

Addresses complex policy and practice challenges with rigorous research, academic expertise and analysis focused on improving outcomes.



Innovation

King's 20 accelerator

The King's 20 accelerator is a year-long accelerator programme aimed at supporting the 20 brightest ventures from King's students to reach their potential.

200+ hours of mentorship, 40+ hours of workshops

Highlights:

German Kraft have made over £100k

Beau Nuage are selling in Conran and have launched a new backpack product

Kindlink are closing new clients (Jaguar, Wells Fargo)

Edvent have sold a major contract to clients in Canada

Prime Revision has had 5,000 app downloads since November

AwesomeTrip have made £8,000+ revenue since launch in October

Teech have raised £300k investment

C the Signs won a Tech4Good Award, and Cofounder Dr Bhavagaya Bakshi won the 2017 WISE Technology & Engineering in Health & finalist for the WISE Tech Innovation Award.

David Wexler, a King's undergraduate music student has raised £15,500 for Smart Gloves and been awarded a scholarship manufacturing trip to China.

Cycl raised £45,000 on BBC's Dragon's Den and support from Dragon Nick Jenkins

Fares Alaboud, Founder of the Medic App was awarded £20,000 through the Soyoye Technology Innovation Prize and £10,000 from the Allesch-Taylor Scholarship for Entrepreneurship. The Medic app has also been backed by UK Trade and Investments.

Moovr have won a sponsored trip to Kenya to pilot agriculture supply chain project and impact lives of farmers and communities across the country.

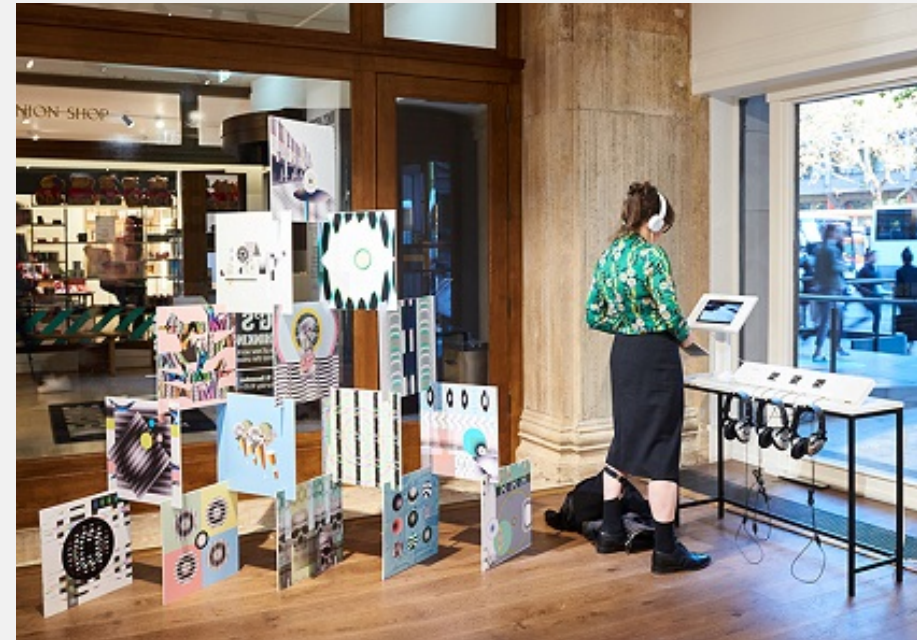
Styled by Africa were awarded £10,000 through the Allesch-Taylor Scholarship for Entrepreneurship and the Toucan & TCCE Spotted in 2016 competition





Innovation

King's Culture

- **Cultural Institute**
 - *facilitates collaborations between King's and the cultural sector*
- **Cultural Programming**
 - *Engages the public by bringing together academics, artists, cultural partners and students in curated spaces*
- **Cultural Partnerships & Enquiry**
 - *Connects the university with policy makers, think tanks, third sector organisations and government bodies*
- **Science Gallery London**
 - *With a focus on 15-25 year olds it brings together researchers, students, local communities and artists*



OUR LONDON LOCATION

-  King's locations
-  London landmarks

- 1 King's Strand Campus
- 2 King's Bush House
- 3 Royal Courts of Justice
- 4 Maughan Library
- 5 Palace of Westminster
- 6 London Eye
- 7 South Bank arts complex
- 8 Tate Modern
- 9 St Paul's Cathedral
- 10 King's Waterloo Campus
- 11 Shakespeare's Globe
- 12 Waterloo station
- 13 St Thomas' Hospital
- 14 City of London financial district
- 15 King's St Thomas' Campus
- 16 King's Guy's Campus
- 17 The Shard
- 18 Guy's Hospital



**President
Professor Edward Byrne
&
Vice-President International
Professor Funmi Olonisakin**

Look forward to
welcoming you in London
in 2019



