



Reshaping library support for research at King's College London

6th UNICA Scholarly Communication Seminar, Bruxelles
26th November 2012

Gavin Beattie, Associate Director – Research & Learning Liaison
Nick Woolley, Associate Director – Information Resources



Outline

- Introduction to King's and Library Services
- Student experience
- How research is changing
- The traditional library research support portfolio
- The role of collections
- Institutional repository and CRIS
- Open Access – new roles for libraries
- Research data

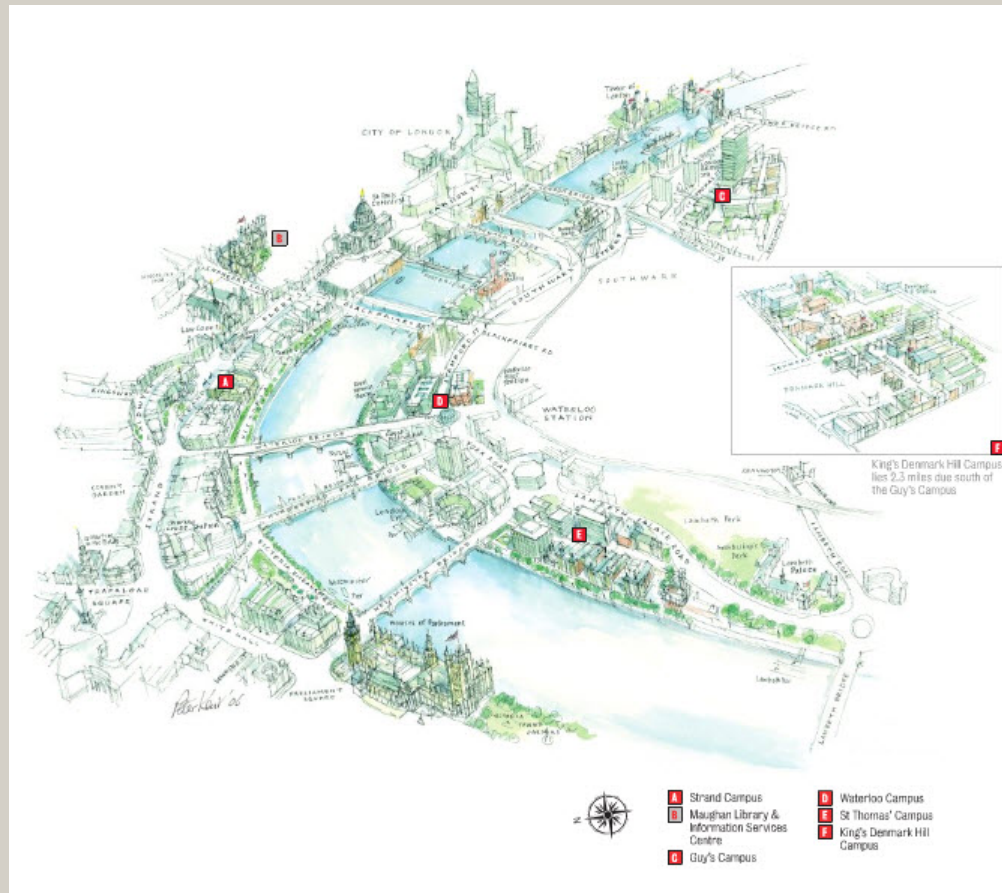


King's College London

- Founded in 1829, one of top 30 universities in the world
- Over 24,000 students from 150 countries
- Five recent mergers:
 - King's College School of Medicine & Dentistry 1983
 - Chelsea and Queen Elizabeth Colleges 1985
 - Institute of Psychiatry 1997
 - United Medical & Dental Schools of Guy's & St Thomas' Hospitals 1998
- Part of King's Health Partners AHSC with Guy's and St Thomas', King's College Hospital and South London and Maudsley NHS Foundation Trusts
- Five campuses in London



Most central London university



King's College London Library Services

- Robert Hall, Director of Library Services
- Eight libraries across five campuses
- Large multidisciplinary print and digital collections
- Four divisions: Customer Services, Information Resources, Archives & Information Management and Research & Learning Liaison
- Part of Students & Education Support





Student experience - the UK context

- Universities are more focused than ever on taught students
- Tuition fees in England have trebled to £9,000 per year in 2012
- Students are becoming more demanding – rightly so!
- Even research-intensive institutions are prioritising the student experience
- This may lead to more UK students going to other parts of Europe!

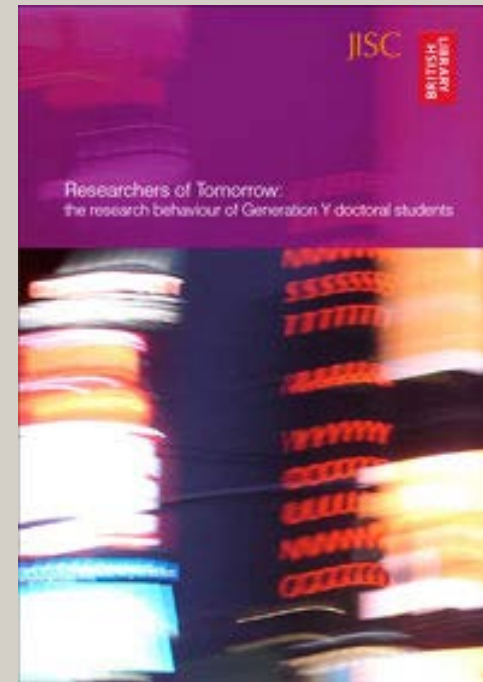


Research is changing

- Interdisciplinarity
- New requirements from government and funders
 - Open access
 - Data
 - Pressure to publish
- Increased competition for funds
- E-research / e-science
- Etheses

Researcher of Tomorrow report 2012

- Research behaviour of Generation Y doctoral students (born between 1982 and 1994)
 - increasingly reliant on secondary research resources rather than primary materials
 - Authentication and licence limitations to subscription-based resources are a problem
 - Open access and copyright cause confusion
 - insufficiently trained or informed to use the full potential of innovative technology in the digital information environment



<http://www.jisc.ac.uk/publications/reports/2012/researchers-of-tomorrow>



Re-skilling for Research - RLUK report 2012

- Identified a skills gap for Librarians in 9 key areas
 - preserving research outputs
 - data management and curation
 - complying with the mandates of funders
 - data manipulation tools
 - data mining
 - metadata
 - preservation of project records
 - sources of research funding
 - develop metadata schema, advise on standards and practices

<http://www.rluk.ac.uk/content/re-skilling-research>



The traditional support portfolio

LIBRARY RESEARCH SUPPORT

- ABOUT US
- NEWS & EVENTS
- VISITING LIBRARIES AND ARCHIVES
- USING OUR SERVICES
- COLLECTIONS AND RESOURCES
- SUBJECT SUPPORT
- RESEARCH SUPPORT**
 - Ideas
 - Funding
 - Managing information
 - Disseminating information
 - Evaluating Research
 - Preserving research
- HELP AND GUIDANCE
- CONTACT US

RESEARCH SUPPORT

SUPPORT THROUGH THE RESEARCH LIFECYCLE

IDEAS

Information resources
ISkills Training
Literature Review Support
Research Alerts

RESEARCH FUNDING

Funding Alerts
Support with funding proposals

MANAGING INFORMATION

IT & ISkills Training
Software
Bibliographic management
Networking

DISSEMINATING RESEARCH

Publishing & Open Access
Presenting & Posters
Theses; Copyright

EVALUATING RESEARCH

Citation Analysis
The REF

PRESERVING RESEARCH

Data management and archiving

The traditional support portfolio

- Training and one-to-one support
- Physical library spaces
- Bibliometrics
- Interlending and document delivery
- Collection development and management

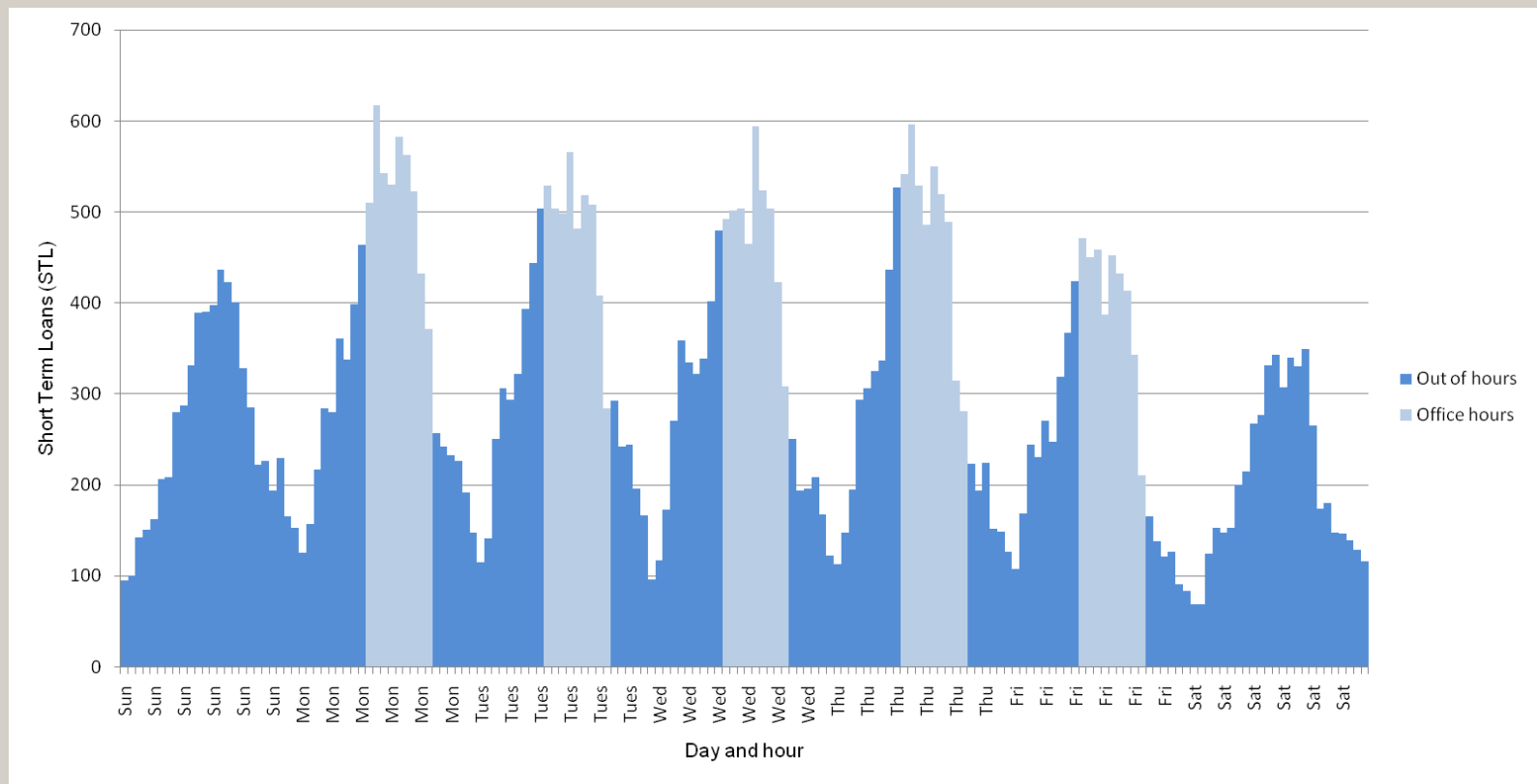




Collection review

- Major strategic review of Library collections
- Consultations and surveys to all Schools
- Initial findings and outcomes
 - Overall our collections are meeting King's needs
 - Identified some areas of collection weakness
 - Introduced free Interlending and document delivery (EBL)
 - Continued moving to e only, but there is still demand for printed books

Extending access to ebooks



Pay per view (Short Term Loans) on EBL December 2010 - October 2012



The UKRR

- HEFCE funded shared service (£9.83 million)
- Partnership of 29 UK Universities and British Library
 - ‘A collaborative, coordinated and sustainable approach to long-term retention, storage and access to low use print research journals’
- Main aims:
 - Free up space on campus – 100km shelf space
 - Create a national research reserve (3 copies per volume)
- Five year programme, comprising ten six month cycles
- Subscription model
- King's have submitted approx. 5.5km since 2009
- Critical to secure access to journals and enable space redevelopment
- <http://www.ukrr.ac.uk/>



Collaborative Collection Management

- JISC funded project with Senate House Libraries and in partnership with RLUK and Mimas
- Using the RLUK database and Copac metadata aggregation to analyse and compare print collections
 - Copac is the UK union catalogue
 - Over from over 21 million records from over 70 collections
- Copac Collection Management Tools (CCM)
 - Identify unique or duplicate holdings
 - Identify subject-based strengths
- Evidence-base to inform collection development, management and access advice for researchers
- <http://kclshlccm.wordpress.com/>



A growing print monograph collection

- Major gifts to support research. Recent gifts include:
 - The library collection of the **Foreign and Commonwealth Office** (FCO) was transferred to King's in 2007, comprising over 60,000 volumes of books, pamphlets, reports, typescripts and manuscripts.
 - The library collection of **Canning House** (the Hispanic and Luso Brazilian Council founded in 1943) and described as 'one of the jewels of Latin American Studies in England', was transferred to King's in 2012, comprising over 50,000 volumes.



The Institutional Repository and CRIS

- Pure from Atira (implemented 2011-12)
- Draws data from several local business systems
- Combines:
 - Publication database and research outputs
 - Staff profiles
 - Grant applications and funding information
 - Organisational units and hierarchy
- Back-end administrative dashboard
- Front-end portal
- Supports College return for the REF2014
- Library working in close partnership with Research Management and IT directorates



Pure

King's College London

k0958536
 Log out

Editor

Master data

Reporting

Editorial overview

Research output

Activities

Projects

Applications / Funding

Impacts

Student theses

Report definitions

Research output

60116

Article

34829

Meeting abstract

7907

Chapter

3447

Scientific review

2617

Conference paper (Chapter in Book/Report/Conference proceeding)

2424

Book/Film/Article review

1368

Book

1957

Editorial

1873

Letter

1212

Conference paper (Contribution to journal)

691

+ New

Import

Projects

0

Impacts

0

Report definitions

0

View Report definitions

+ New

Activities

13300

Participation in conference

5285

Publication peer-review

2933

Membership of external research organisation

1772

Editorial activity

1234

Contribution to the work of national or international committees and working groups

660

Work on advisory panel to industry or government or non-government organisation

538

Fellowship awarded competitively

428

Membership of peer review panel or committee

250

Election to learned society

136

Participation in workshop, seminar, course

36

+ New

Applications / Funding

0

Student theses

979

Doctor of Philosophy

967

Doctor of Medicine

12

+ New

Import

Add new

My editorial tasks

Research output

882

Student theses

1

Journals

1722

Publishers

1991

Duplicate title

1341

Duplicate ISBN

14

Duplicate DOI

89

Duplicate ISSN

138

Duplicate title

646

Duplicate titles

377

My messages

Messages

1715



Discover King's Research

SEARCH

Welcome to King's Research Portal where you can discover information about our research, from researcher biographies and funding details, to outputs such as published books and peer-reviewed journal articles.

ABOUT



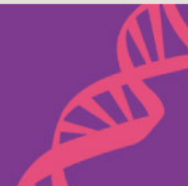
OPEN ACCESS



NEWS



EVENTS





Support for Pure and the Research Portal

- Library research support expertise
 - Pure project team and management
- Advocacy and training
- Digital Assets Team:
 - Publication data import, validation, enhancement
 - Quality Assurance
 - OA full text guidance, policy checking and compliance
 - Etheses
 - Phone and email support for researchers



Open Access in the UK - Finch

- So far - 35% Green, 5% Gold
- Significant changes to policy and approach in 2012
- Independent working group commissioned by UK Government:
 - “Accessibility, sustainability, excellence: How to expand access to published research findings” aka the ‘Finch Report’ (June 2012)
- How to make published research more accessible without adversely affecting quality, peer-review, and the publishing industry
- Best-fit solution and business model
- Main recommendations:
 - Mixed economy where subscriptions and OA co-exist
 - Policy direction to OA recognising the need for a transition



Open Access in the UK - RCUK

- RCUK (UK's 7 Research Councils) £11.2b budget (£3b per year)
- RCUK Policy on Open Access (July 2012) in effect from April 2013
- Dissemination is part of research process and funders need to ensure outputs are OA, defined as:
 - Unrestricted online access to peer-reviewed publications
 - Accessible includes for re-use and text or data mining
- Criteria to assess if a journal complies with the policy
 - Gold CC-BY or Green (post-print) CC-BY-NC with max 6 /12 mth embargo
- Gold is preferred
 - Institutions have to establish publication funds and procedures
 - Estimate currently fund 26k publications per year
 - Estimate average APC (incl. VAT) £1,658
 - 5 year transition – 45% to 75% Gold



Managing APCs to support Gold OA

- UK Government (BIS) pump priming £10m for Gold APCs for research-intensive universities 2012
- RCUK block grants to follow
- Universities to manage APCs
- Libraries well-placed to adopt this new role:
 - Knowledge and skill-sets
 - Experience of administering Wellcome Trust OA
- Need to set-up transparent and visible APC process
- Natural extension of Digital Assets support for Pure at King's



Research Data

- Increasing and complex requirements for managing research data
- Legislation, especially regarding personal information
- Desire to share and reuse data and government directives
- National data centres such as the UK Data Archive (<http://data-archive.ac.uk/>)
- Organisations such as DataCite promote the sharing of data



Research data – Archives & Information Management at King's

- Developing a policy on research data management for King's
- Provide training and advice on compliance with legislation and requirements of funders
 - Developing data management plans
 - Data protection and Freedom of information
 - Preservation and Disposal
 - Ethics
- Optimising Data Management project
 - Identify requirements - storage, data management plans, policy and framework, data quality, training and support



Rethinking the Research Library Model

- RLUK project that aims to
 - analyse the key current characteristics of research libraries
 - analyse key trends in the HE, research and information landscapes
 - create briefing and advocacy papers on key issues
 - develop links with organisations in the UK and overseas
 - create forums and develop networks for discussion and engagement with the RLUK and related communities
 - help identify key principles and goals to feed into discussions on the next RLUK strategic plan

<http://rlukrrlm.wordpress.com/>



Thanks for listening