



Network of Universities
from the Capitals of Europe



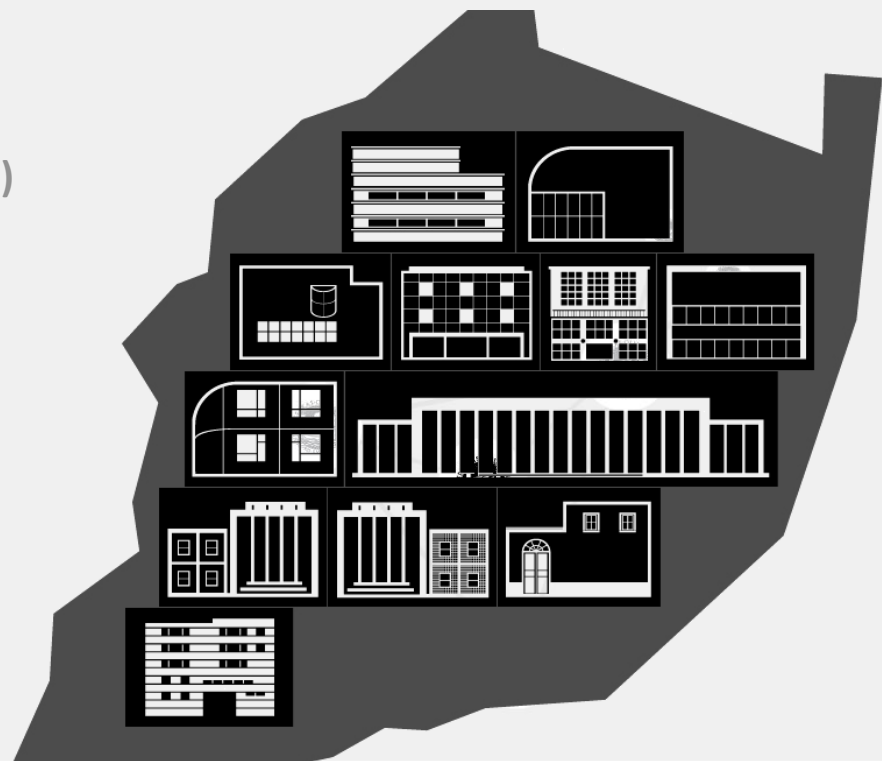
The Door to the UniverCity

Márcia Vila

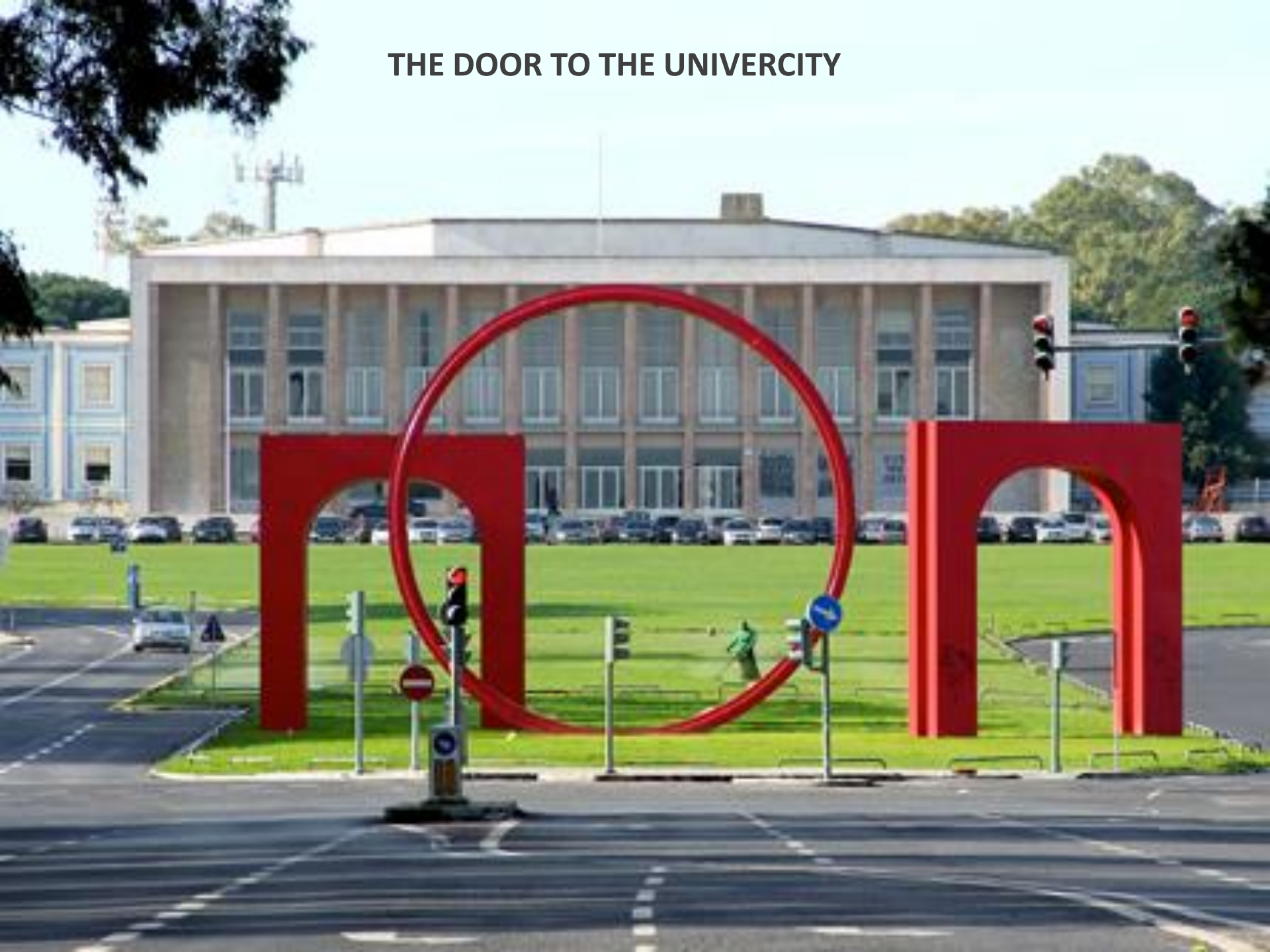
UNICA Green Academic Footprint (UGAF)

– 3rd Open Workshop

6-7 June 2013, University of Lisbon

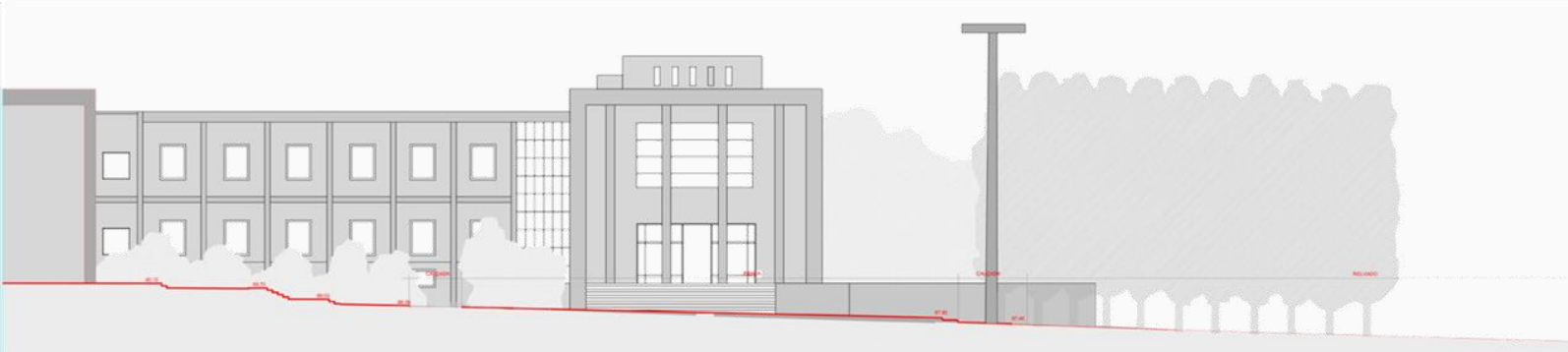


THE DOOR TO THE UNIVERCITY





IN|UL



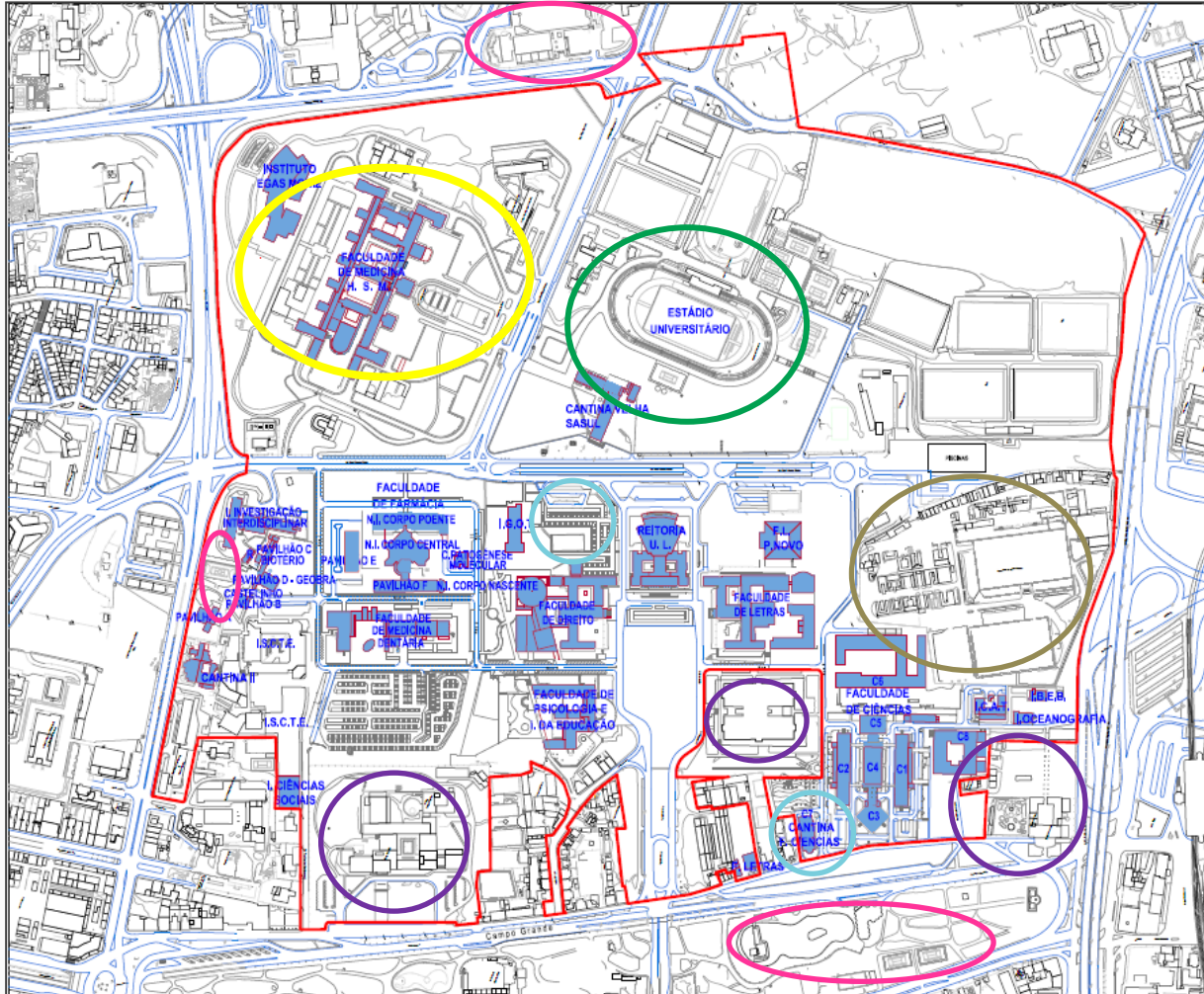
The Door to the UniverCity

CAMPUS OF UNIVERSITY OF LISBON



- ✓ Environmental and social impact in the Campus
 - Occupied by 68 buildings corresponds to 14.6 ha
 - Students 23 000
 - Teachers 1 800
 - Research 4 500
 - Employees 1 000.
- ✓ Not limited by physical boundaries
 - which does not restrict the movement of vehicles and users external ;
- ✓ Point of passage and crossing between different areas of city;
- ✓ Presence in the surrounding area of collective facilities such as :
 - Saint Mary Hospital; Lisbon University Stadium; Canteens; City Museum...

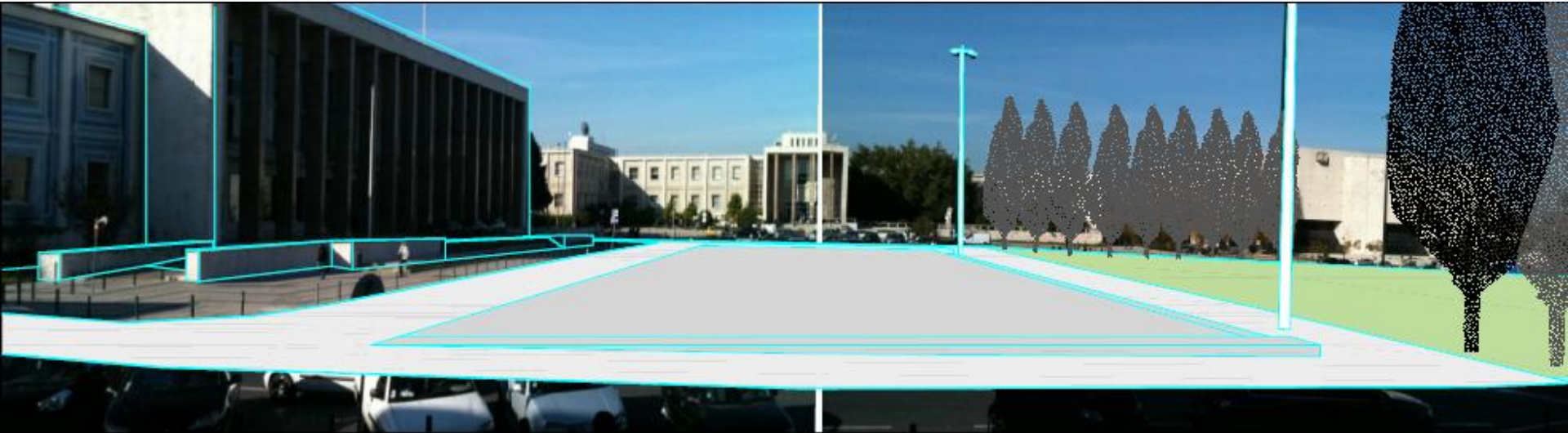




- Saint Mary Hospital Lisbon
- University Stadium;
- Canteens;
- Museum and Other;
- Portuguese Equestrian Society;
- Institutes of Higher Education.



IN|UL



The Door to the UniverCity

GREEN UniverCity

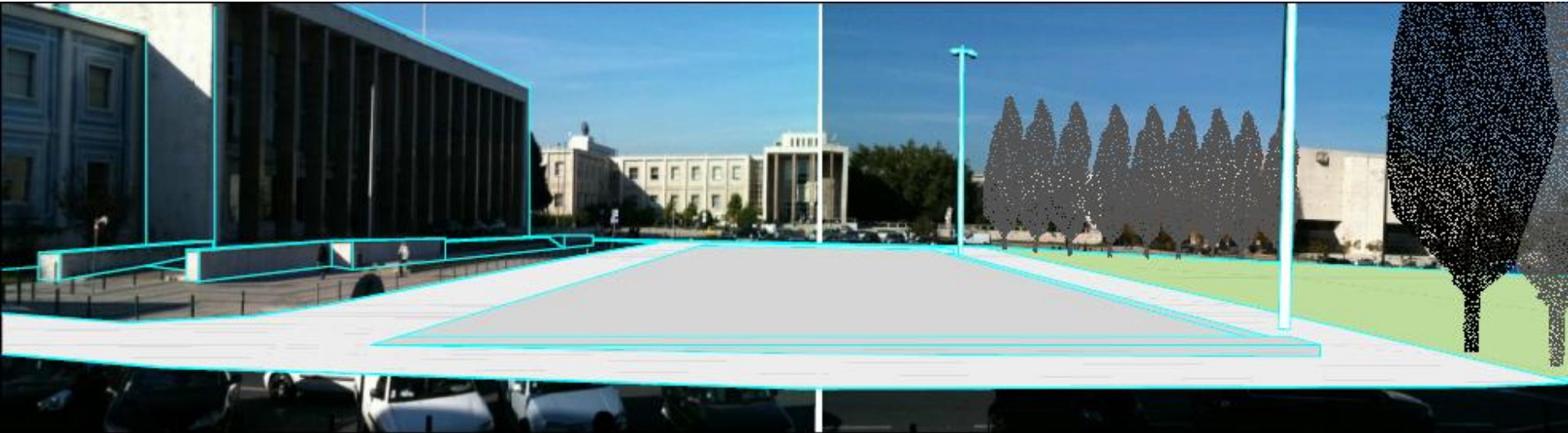




Our goals of action towards a **Green University** in order to broaden the ecological and social awareness are:

- ✓ To rationalizes the use of paper and energy and water consumption;
- ✓ To promote waste reductions, reuse and recycling;
- ✓ To reduce pollution and noise levels on campus;
- ✓ **To attain a better spatial planning and territorial expansion of the University;**
- ✓ To create more green areas;
- ✓ To improve the acessibility and mobility on campus.





The Door to the UniverCity

REQUALIFICATION OF THE ALAMEDA

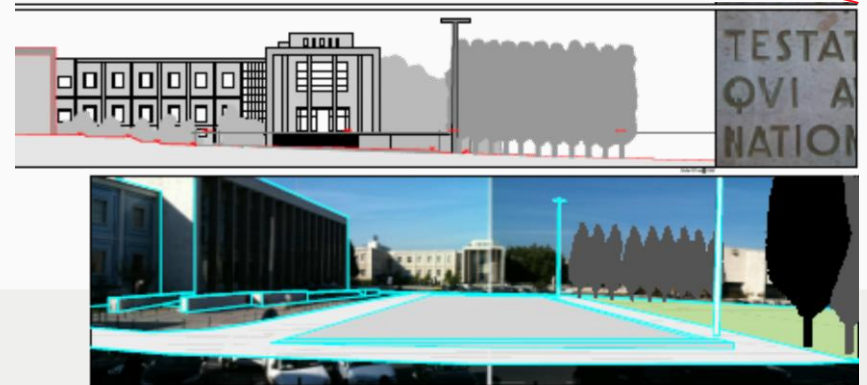


Requalification of the Alameda

- ✓ Creation of an entrance to the Cidade Universitária – Sculpture by Charters de Almeida “Uma porta para a UniverCidade” (“A door to the UniverCity”);
- ✓ Creation of social areas;
- ✓ Sidewalk widening;
- ✓ Lateral containment elements for traffic deterrent;
- ✓ Installation of urban furniture and equipment;
- ✓ Requalification of the surroundings and frontal area of the Rectory building;
- ✓ Rehabilitation of the frontal lawn;
- ✓ Car parking reorganization;
- ✓ Connection of the pedestrian crossings to the central space.



Requalification of the Alameda



Requalification of the Alameda

The Requalification of the Alameda, entrusted to the **Municipality of Lisbon**, expects the following improvements on the Universities' Campus:

- ✓ Creation of a Central Square at the Alameda replacing the current Rectories' parking lot;
- ✓ Pedestrian mobility improvements;
- ✓ Afforestation of the Alameda da Universidade;
- ✓ Creation of an esplanade nearby the Law Faculty;
- ✓ **Car traffic reduction at the Alameda.**



Requalification of the Alameda

Acquisition and installation of Bicycle parking systems with 200 parking spaces.



WE PLEDGE TO BECOME GREENER!





Network of Universities
from the Capitals of Europe



Thank you very much!

Márcia Vila

UNICA Green Academic Footprint (UGAF)
– 3rd Open Workshop
6-7 June 2013, University of Lisbon

