



**ACC DAR** Adapting to Climate Change in Coastal Dar es Salaam

UNICA – Bruxelles, 4 June 2013

## Europa-Africa Academic Cooperation: the ACC DAR project



**SAPIENZA**  
UNIVERSITÀ DI ROMA



**Silvia MACCHI**

**Sapienza University of Rome, Italy**

**[silvia.macchi@uniroma1.it](mailto:silvia.macchi@uniroma1.it)**

## Project information

**Title:** Adapting to Climate Change in Coastal Dar es Salaam

**Time:** 3 years - from Feb 2011 to Jan 2014

**Funding entity:** European Commission, DEVCO (grant)

**Applicant:** Sapienza University of Rome

**Partner:** ARDHI University, Dar es Salaam

**Associate:** Dar es Salaam City Council

The project involves around **20 researchers (seniors & juniors)**.

As such, it represents a golden opportunity for junior training in both partner universities and for establishing relations with other universities.

Project **results** available for downloading at [www.planning4adaptation.eu](http://www.planning4adaptation.eu)

## **Project OBJECTIVES**

### **Overall objective:**

to contribute to implementation of the National Adaptation Programme of Action of the United Republic of Tanzania - Priority sectors: human settlements, coastal and marine resources.

### **Specific objective:**

to enhance the capacity of Dar es Salaam LGAs to support peri-urban population in their effort to cope with environmental changes.

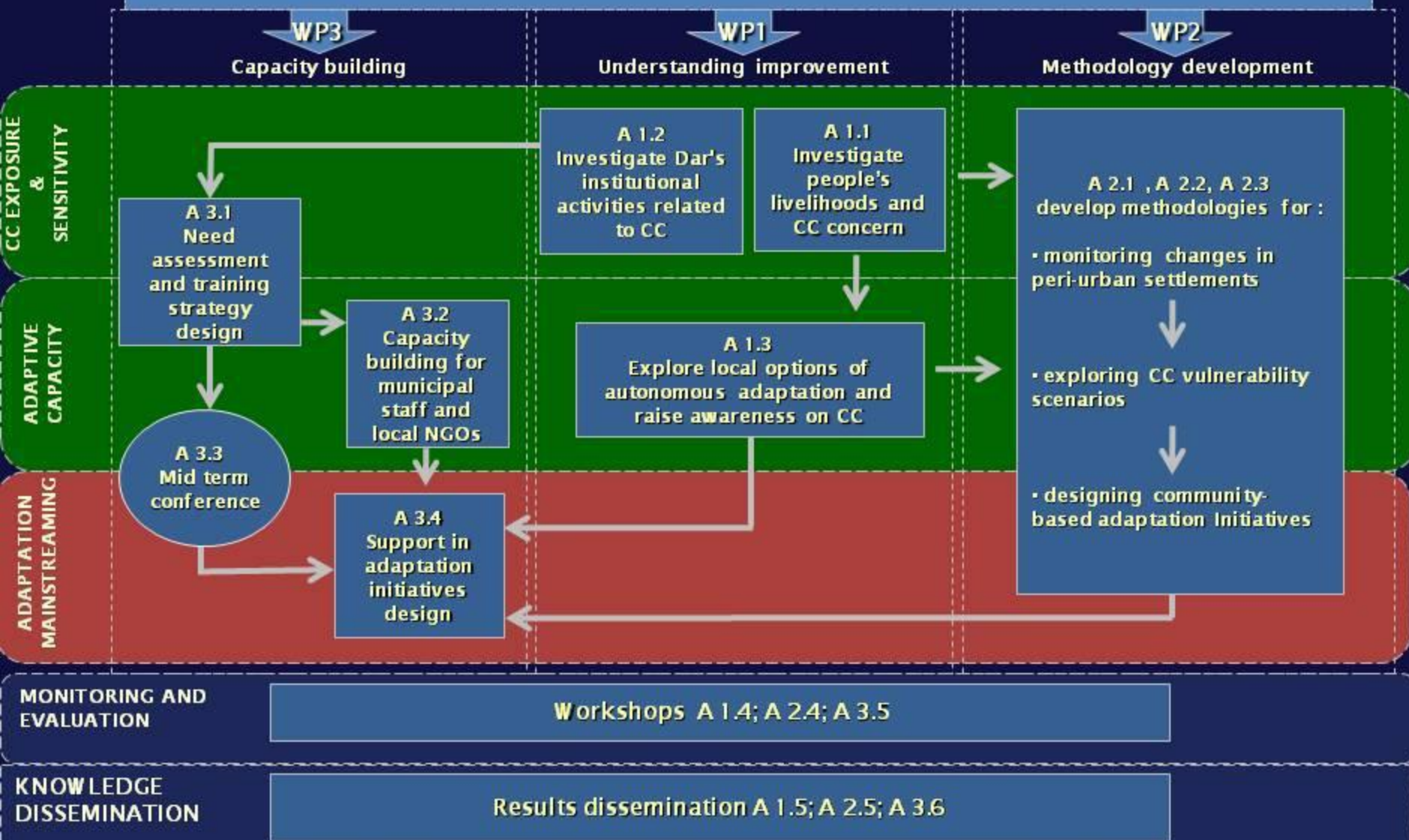
**At least 4 institutional adaption initiatives will be identified to be undertaken by Dar's LGAs**

## Project RESULTS

### By the end of the project

- R1 Knowledge on current and future livelihood strategies of women and men from Dar's peri-urban areas will be increased
- R2 Methodologies at the disposal of Dar's LGAs for the design of initiatives to supporting people adaptation efforts will be improved
- R3 Dar's municipal personnel trained to understand CC issues, identify adaptation objectives and integrate them into existing UDEM strategies and plans will be augmented

# Adapting to Climate Change in Coastal Dar es Salaam (ACCDar)



NAPA implementation at local level

## Challenges we faced

- EU financial regulations are not well-known by African Universities, and not always compatible with their own regulations: **basket fund?**
- Research training faces a number of problems (e.g. poor research commitment, excessive teaching duties): **feasibility study?**
- No interest and capacity in result dissemination: ?
- Competition rather than collaboration among similar projects: ?
- Success of the action dependent on individual willingness / poor support from Universities: ?
- Very problematic relationships with LGAs: ?

## Activities ensuring sustainability

### RESEARCH NETWORKING initiatives

- Project international workshops (06/12, 04/13, 12/13)
- Junior researchers mobility within the project
- Application to the Urban Studies seminar series (leader: Royal Holloway, University of London) 06/12
- Application to Erasmus Mundus (leader: Compostela University) 03/13
- Application to Sapienza for a PhD scholarship reserved to educated abroad 05/13
- Application to EuropeAid (next call)



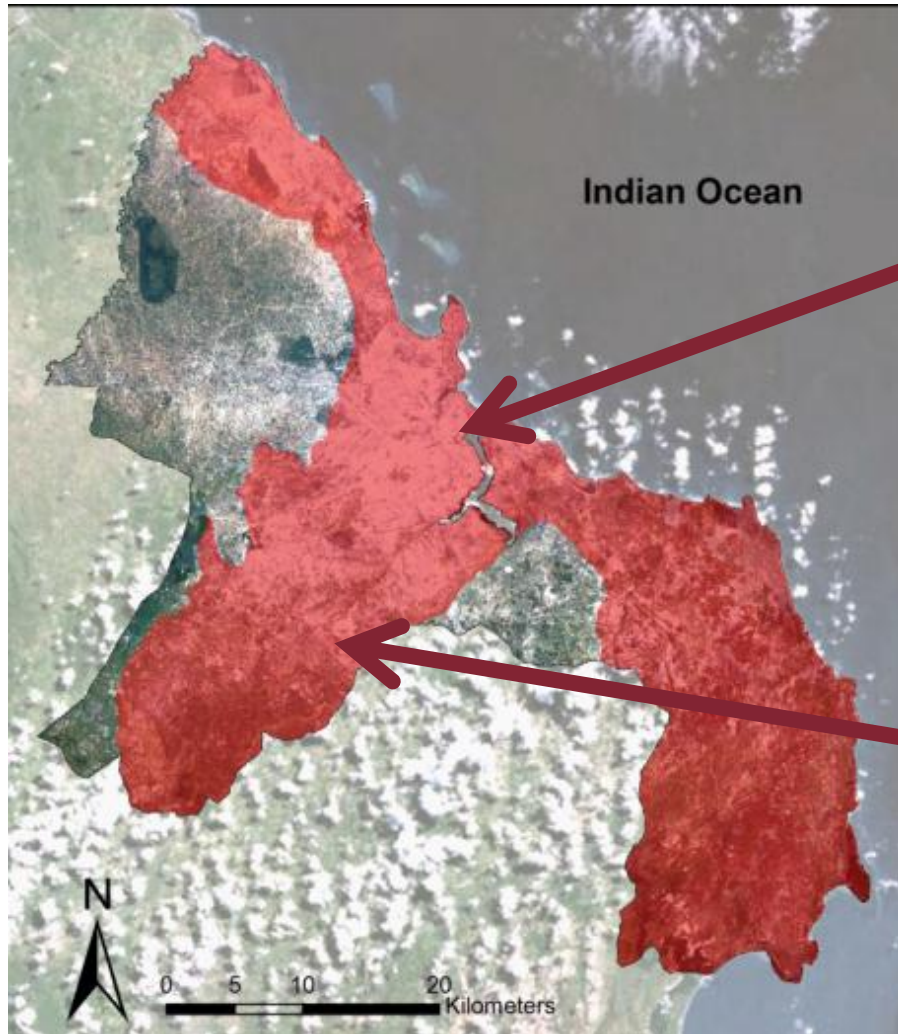


# Project Outcomes and Impacts

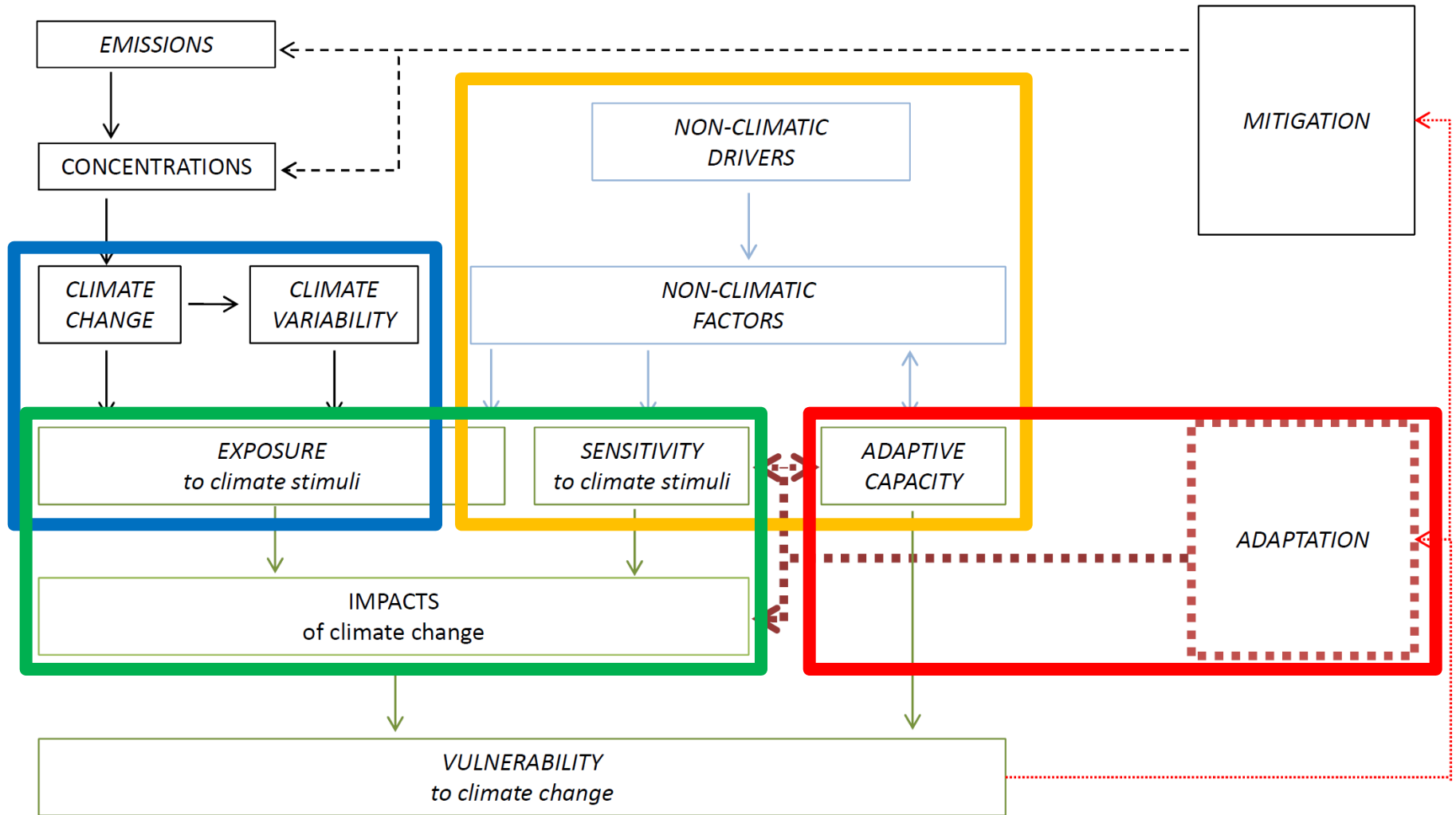
## Impacts

- Reduction of local vulnerability to environmental changes by integrating adaptation objectives into Urban Development and Environment Management planning;
- Enhancement of local governance by strengthening LGAs capacities for adaptation while focusing on increased participation of women and men in decision making;
- Improvement of communities' capacity for environmentally friendly exploitation of natural resources by raising awareness on the consequences of their adaptation strategies (maladaptation)

# Dar es Salaam Coastal Plain



# Conceptual framework



## Project STRATEGY

- A. No measure for the reduction of PEOPLE'S exposure (like relocation to safer areas) or sensitivity (like new water pipes), as those measures are considered unsustainable both economically and socially

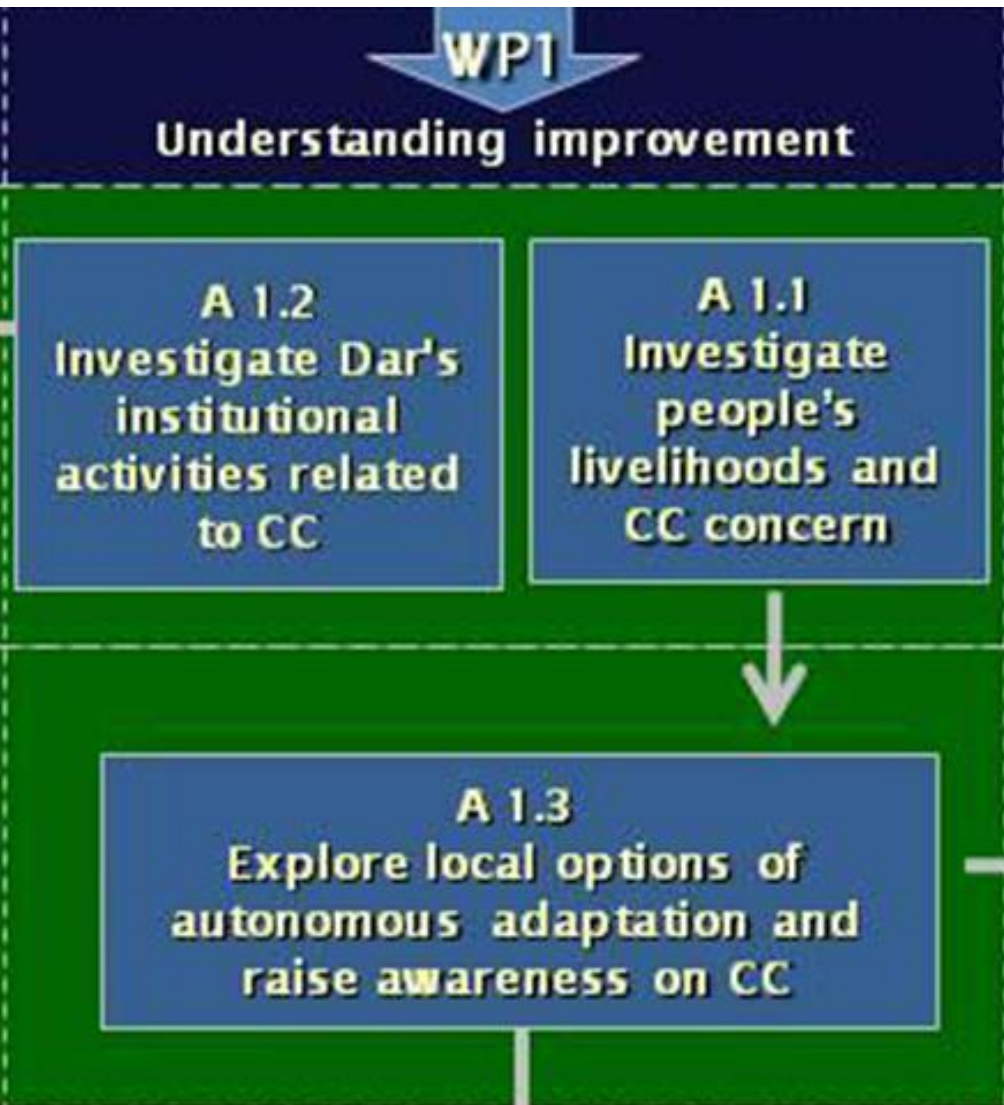
**EXISTING LOCAL ADAPATIVE CAPACITY IS IDENTIFIED AS THE MAJOR RESOURCE FOR CC ADAPTATION**

- B. No new adaptation-specific plan, as planning is far than effective in Sub-Saharan Cities

**MAINSTREAMING OF ADAPATATION OBIJECTIVES INTO EXISTING PLANS AND PROGRAMS**

also taking the opportunity for revising them towards more effectiveness

- C. Focus on Urban Development and Environmental Management  
**TO BETTER EXPLOIT PROJECT PARTNERS' COMPETENCES AND KNOW-HOW**



## Implemented Activities

Activity 1.1 – Household Questionnaires

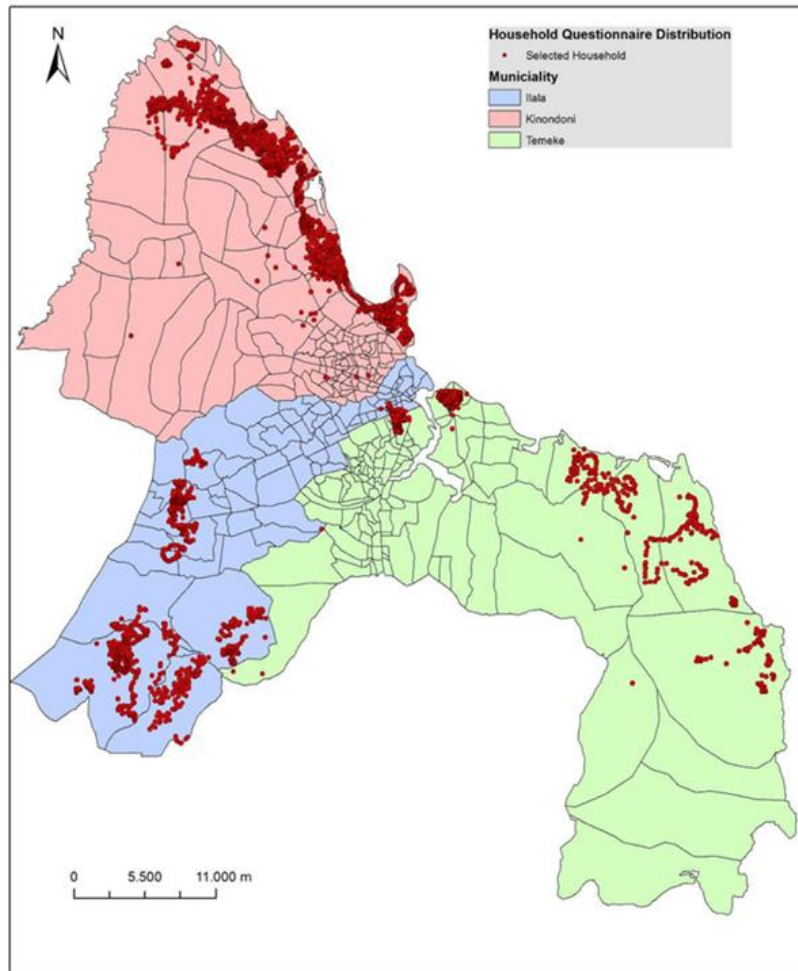
Activity 1.2 – Municipal officers' Questionnaires

Activity 1.3 – Participatory Theatre

Activity 1.4 – 1st Evaluation Workshop



## HH Questionnaires



## Participatory Theatre



**A 2.1 , A 2.2, A 2.3  
develop methodologies for :**

• **monitoring changes in  
peri-urban settlements**



• **exploring CC vulnerability  
scenarios**



• **designing community-  
based adaptation Initiatives**

## Implemented Activities

Activity 2.1 - Land Cover Change Monitoring and Analysis

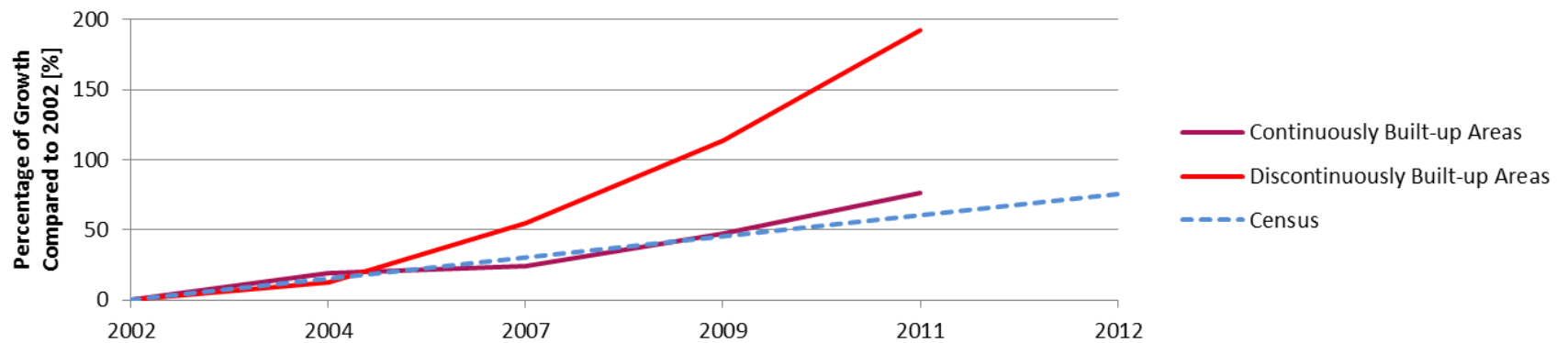
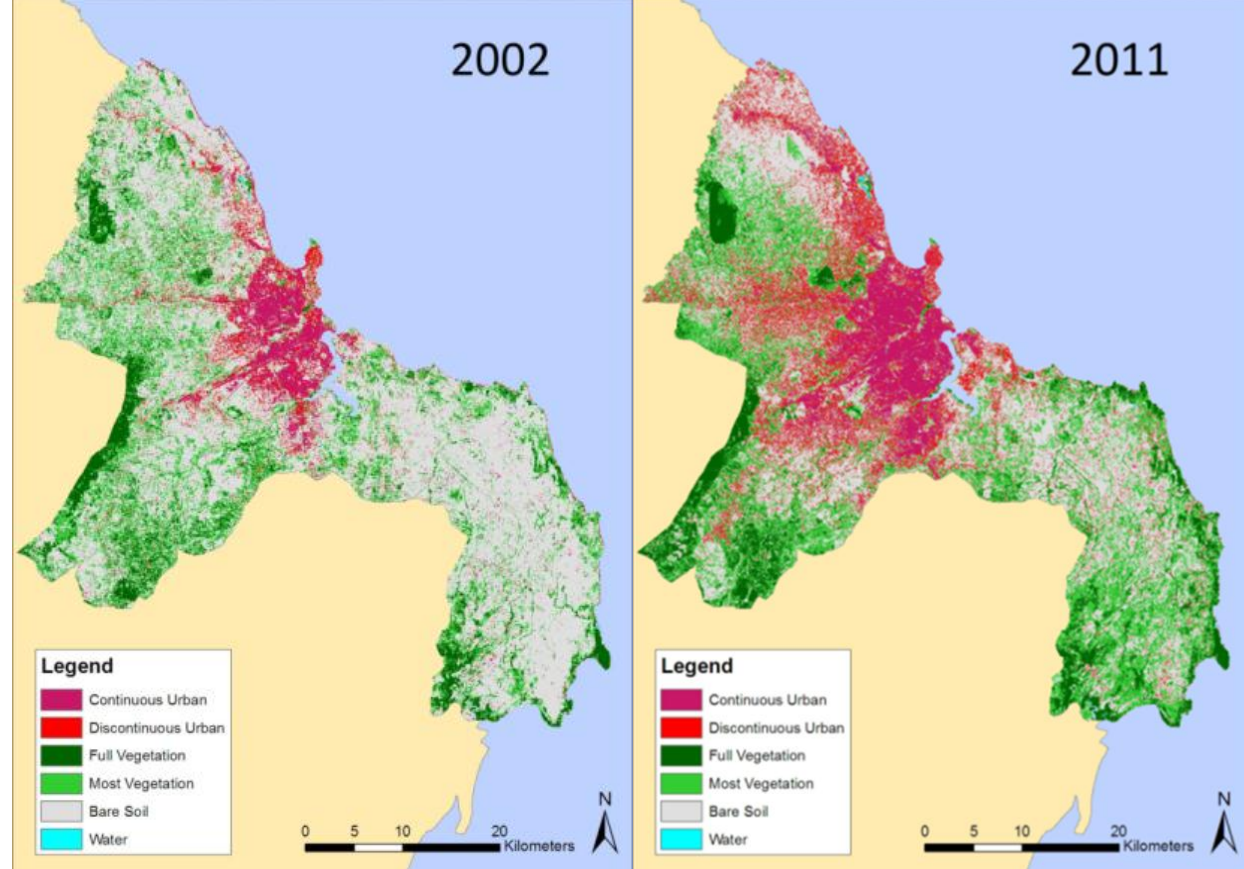
Activity 2.2 - Seawater Intrusion Monitoring and Analysis

Activity 2.3 – Backcasting participatory scenarios (Sep 2013)

Activity 2.4 – 2nd Evaluation Workshop

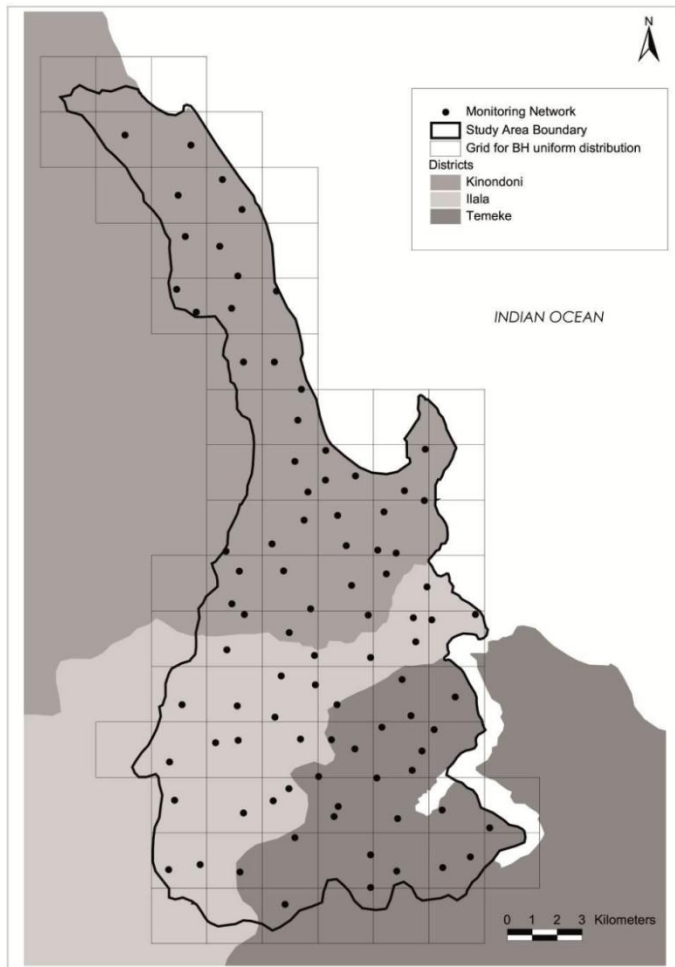


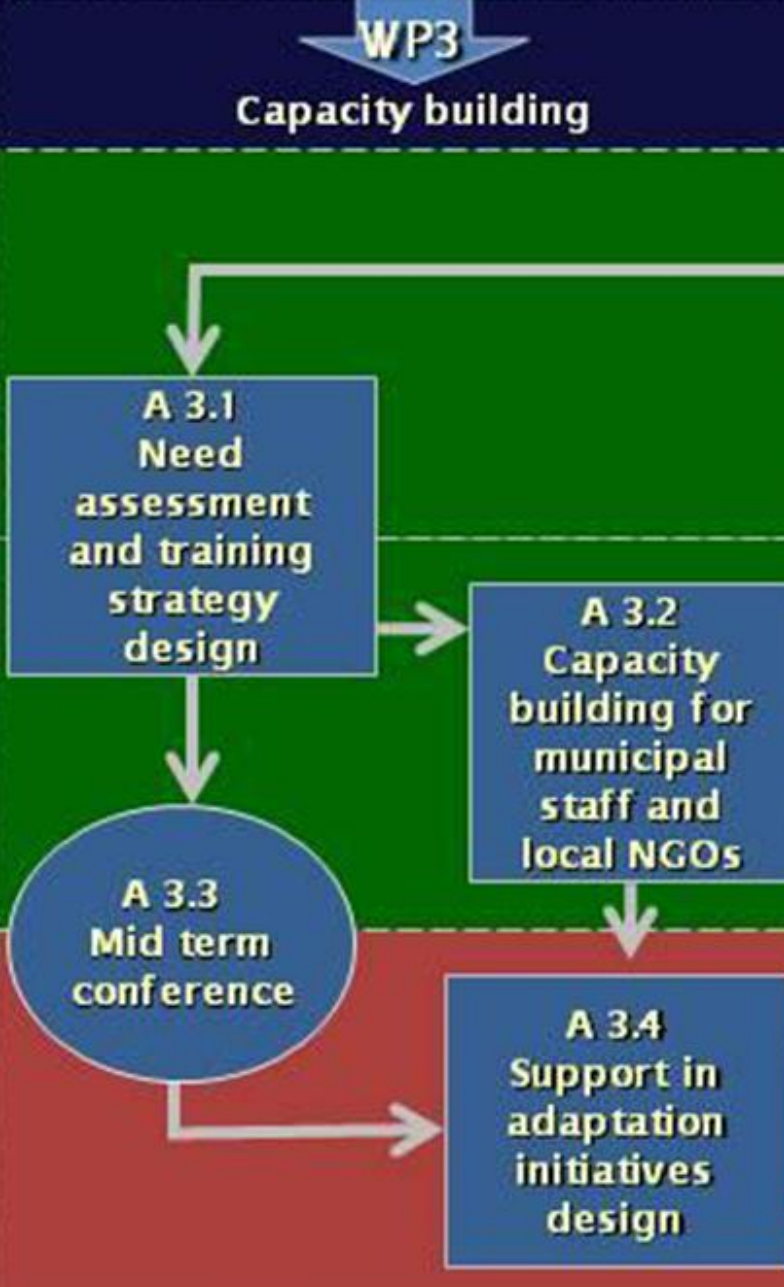
# Land Cover change monitoring and analysis





# Seawater Intrusion monitoring and analysis





## Implemented Activities

Activity 3.1 – Capacity Building Strategy

Activity 3.2 – Training Program

Activity 3.3 – City Conference (July 2013)

Activity 3.4 – Adaptation Initiatives Design (Sep-Nov 2013)

Activity 3.5 – 3rd Evaluation Workshop (Dec 2013)