



PASCL



Network of Universities
from the Capitals of Europe

PASCL Project

(Peer Assessment of Student-Centred
Learning in Higher Education)

Marta Rachlewicz, UNICA

UNICA EduLab

04.12.2014, Lisbon



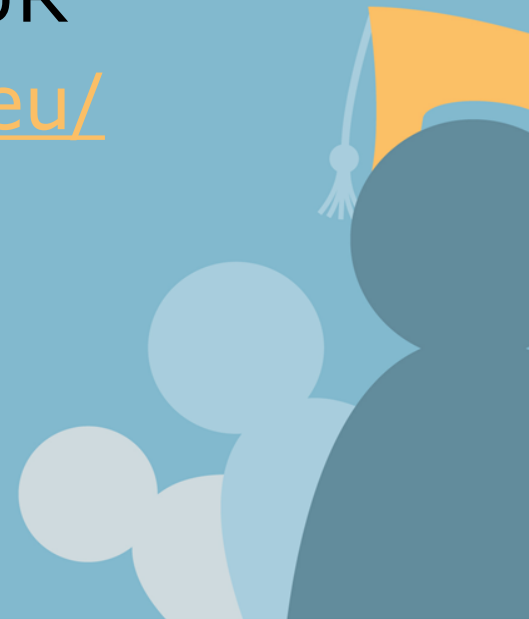
PASCL Project Objectives

- Develop the PASCL guidelines, forming the framework for Peer Assessment (PA) of Student-Centered Learning of a higher education institution
- Gather and promote the knowledge about SCL at European HEIs by preparing a research study on SCL in Europe, creating a pool of experts in SCL, organizing three conferences
- Give higher education institutions insight into their performance regarding implementing SCL by means of conducting the PA of SCL visits



PASCL Facts & Figures

- **Project duration:** 32 months (October 2013 – May 2016)
- **6 partners** based in 5 countries
- **Total budget:** over 500.000 EUR
- **Project website:** <http://pascl.eu/>
- **UNICA** as leader of two WPs



The Partnership



Network of Universities
from the Capitals of Europe

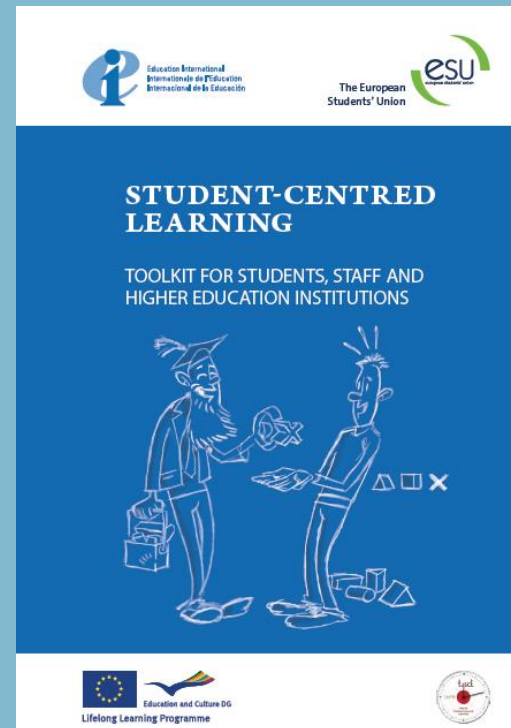


PASCL builds on...

'Time for a New Paradigm in Education: Student-Centred Learning' (T4SCL) Project

Student-Centred Learning represents both a mindset and a culture within a given higher education institution and is a learning approach which is broadly related to, and supported by, constructivist theories of learning. It is characterized by innovative methods of teaching which aim to promote learning in communication with teachers and other learners and which take students seriously as active participants in their own learning, fostering transferable skills such as problem solving, critical thinking and reflective thinking.

T4SCL Toolkit 2010 ('Student-Centred Learning Toolkit for Students, Staff and Higher Education Institutions' published as a part of the project 'Time for a New Paradigm in Education: Student-Centred Learning' funded with support from the European Commission)



Toolkit available online: <http://www.esu-online.org/resources/6068/Student-Centred-Learning-Toolkit/>

PASCL activities

December 2014	Research on the situation of SCL at HEIs in Europe
November 2014	Guidelines & procedures for PA of SCL
February 2015	Training of the experts in SCL (Session I)
April 2015	Piloting the PA of SCL at HEIs
October 2015	Training of the experts in SCL (Session II)
End 2015/ first half 2016	PA of SCL visits at HEIs

PASCL activities

December 2014	Research on the situation of SCL at HEIs in Europe
November 2014	Guidelines & procedures for PA of SCL
February 2015	Training of the experts in SCL (Session I)
April 2015	Piloting the PA of SCL at HEIs
October 2015	Training of the experts in SCL (Session II)
End 2015/ first half 2016	PA of SCL visits at HEIs

- By the end of the year ESU will finalize a publication on the situation of SCL at HEIs in Europe



PASCL activities

December 2014	Research on the situation of SCL at HEIs in Europe
November 2014	Guidelines & procedures for PA of SCL
February 2015	Training of the experts in SCL (Session I)
April 2015	Piloting the PA of SCL at HEIs
October 2015	Training of the experts in SCL (Session II)
End 2015/ first half 2016	PA of SCL visits at HEIs

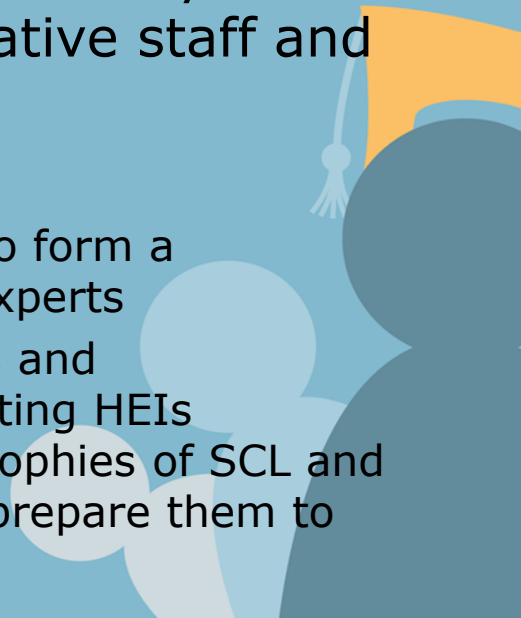
- Procedures for PA of SCL (PASCL Guidelines) developed and available to the institutions interested in hosting a PASCL visit



PASCL Training I

December 2014	Research on the situation of SCL at HEIs in Europe
November 2014	Guidelines & procedures for PA of SCL
February 2015	Training of the experts in SCL (Session I)
April 2015	Piloting the PA of SCL at HEIs
October 2015	Training of the experts in SCL (Session II)
End 2015/ first half 2016	PA of SCL visits at HEIs

- **Dates:** 16-17 February 2015
- **Location:** Central European University, Budapest, Hungary
- **Trainers:** experts from FIER of University of Jyväskylä, CEU and KIC
- **10-15 participants:** university academic and administrative staff and students
- **Goals:**
 - Training the SCL experts to form a European PASCL pool of experts
 - Get the PA team members and representatives of the hosting HEIs acquainted with the philosophies of SCL and enhancement-led PA and prepare them to the PA of SCL visits



PASCL Training I

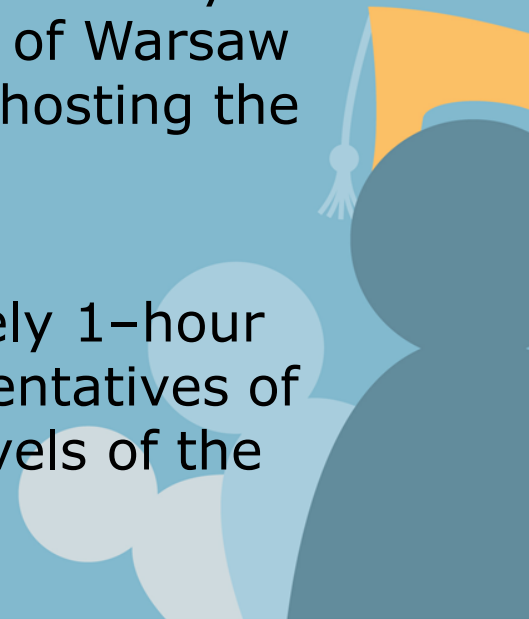
December 2014	Research on the situation of SCL at HEIs in Europe
November 2014	Guidelines & procedures for PA of SCL
February 2015	Training of the experts in SCL (Session I)
April 2015	Piloting the PA of SCL at HEIs
October 2015	Training of the experts in SCL (Session II)
End 2015/ first half 2016	PA of SCL visits at HEIs

- **Application deadline:**
15 January 2015
- **Application packages should include:**
 - CV
 - Motivation letter
 - Letter of support and recommendation from supervisor or from university's senior management/leadership
 - The HEIs volunteering to host a PA of SCL visit will have priority in the selection process for the training
- Applications and inquiries should be sent electronically to Central European University at the following address: highered_programs@ceu.hu with the subject line "application to PASCL training February 2015"
- Final information on training will be soon available on the project website

PASCL Pilot Visits

December 2014	Research on the situation of SCL at HEIs in Europe
November 2014	Guidelines & procedures for PA of SCL
February 2015	Training of the experts in SCL (Session I)
April 2015	Piloting the PA of SCL at HEIs
October 2015	Training of the experts in SCL (Session II)
End 2015/ first half 2016	PA of SCL visits at HEIs

- **UNICA** responsible for this activity
- **Date:** April 2015 (to be decided together with the hosting institution)
- **2 pilot visits at UNICA member universities:** Nova University of Lisbon and University of Warsaw expressed interest in hosting the visits
- **Duration:** 2-3 days
- **Format:** approximately 1-hour meetings with representatives of different parts and levels of the participating HEI



PASCL Pilot Visits

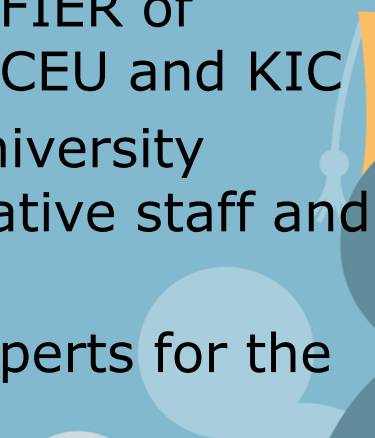
December 2014	Research on the situation of SCL at HEIs in Europe
November 2014	Guidelines & procedures for PA of SCL
February 2015	Training of the experts in SCL (Session I)
April 2015	Piloting the PA of SCL at HEIs
October 2015	Training of the experts in SCL (Session II)
End 2015/ first half 2016	PA of SCL visits at HEIs

- Peer Assessment (PA) is based on the tradition of **enhancement-led** evaluation
- **Goals:**
 - support the participating institutions in recognizing their best practices with regards to SCL
 - not to accredit the HEI, but to help analyze its own practices
 - support in considering the ways of becoming more SC
 - discuss between the PA team and the participating institution
- Both the PA team and the hosting HEI will take part in the **shared PASCL training**



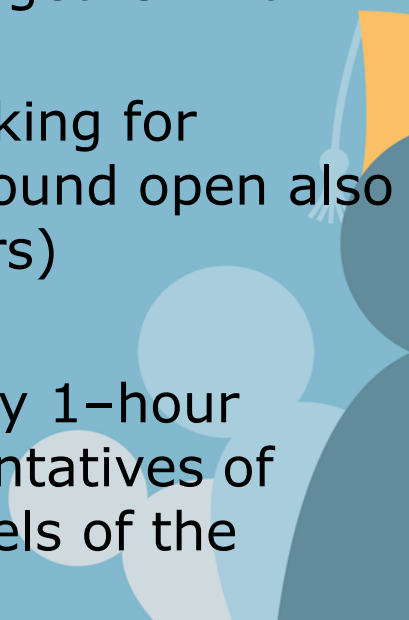
PASCL Training II

December 2014	Research on the situation of SCL at HEIs in Europe
November 2014	Guidelines & procedures for PA of SCL
February 2015	Training of the experts in SCL (Session I)
April 2015	Piloting the PA of SCL at HEIs
October 2015	Training of the experts in SCL (Session II)
End 2015/ first half 2016	PA of SCL visits at HEIs

- **Second session** of the PASCL Training
 - Similar goals and content
 - **Dates:** end of October 2015
 - **Location:** Malta
 - **Trainers:** experts from FIER of University of Jyväskylä, CEU and KIC
 - **10-15 participants:** university academic and administrative staff and students
 - Aimed at training the experts for the final PA of SCL visits
- 

PASCL PA of SCL Visits

December 2014	Research on the situation of SCL at HEIs in Europe
November 2014	Guidelines & procedures for PA of SCL
February 2015	Training of the experts in SCL (Session I)
April 2015	Piloting the PA of SCL at HEIs
October 2015	Training of the experts in SCL (Session II)
End 2015/ first half 2016	PA of SCL visits at HEIs

- **UNICA** responsible for this activity
 - **Final visits** conducted with the experience gained during the piloting phase and two training sessions
 - **Date:** End of 2015/ beginning of 2016 (to be decided together with hosting institution)
 - **6-7 visits:** we are looking for interested HEIs (this round open also to non-UNICA members)
 - **Duration:** 2-3 days
 - **Format:** approximately 1-hour meetings with representatives of different parts and levels of the participating HEI
- 

Thank you for your attention!

In case of any questions and for further information regarding the PA of SCL visits, please contact Marta Rachlewicz
marta.rachlewicz@unica-network.eu



Lifelong
Learning
Programme

This project has been funded with support from the European Commission. This publication reflects the views only of the authors, and the Commission cannot be held responsible for any use which may be made of the information contained therein.

Released under a Creative Commons Attribution
ShareAlike 3.0 Belgium License

You are free:

to Share — to copy, distribute and transmit the work

to Remix — to adapt the work

Under the following conditions:

Attribution — You must attribute the work in the manner specified by the author or licensor (but not in any way that suggests that they endorse you or your use of the work).

Share Alike — If you alter, transform, or build upon this work, you may distribute the resulting work only under the same or similar license to this one.

