



karjera.lt

LENGVESNĒ KARJEROS PRADŽIA

CAREER MANAGEMENT INFORMATION SYSTEM: NEW POSSIBILITIES FOR STUDENTS' CAREER MANAGEMENT SERVICES AND GRADUATES' CAREER TRACKING





Karjera.It is a Students' and Graduates' Career Management Information System that realizes the integration of the tools for career management services, personal career management and graduates' career tracking.

Karjera.It objectives:

- to provide computerized career management services for students and graduates;
- to provide services for organizations;
- to provide a search service of career management information sources for system users and services recipients;
- to automate the process of graduates' career tracking.

25

⋮

HEI

506

⋮

Employers

92

⋮

Career offers

10245

⋮

Students

THE MAIN ASSUMPTIONS: CAREER MANAGEMENT SERVICES

- Nowadays a person in a present chaotic, dynamic and global labor market must be an active career developer
- HEIs have to prepare students for successful integrations with the realistic expectations into the labor market
- Career management services in HEIs have to become a strategic tool for developing students career management competencies
- Career management services should be transferred into the virtual space

CAREER MANAGEMENT SERVICES

CAREER
EDUCATION

CAREER
COUNSELLING

CAREER
EVALUATION

CAREER POSSIBILITIES
EXPLORATION

JOB SEARCH

THE MAIN ASSUMPTIONS: CAREER MANAGEMENT COMPETENCIES

COMPETENCIES AREAS

CAREER MANAGEMENT COMPETENCIES

Self-knowledge

- Awareness of career relevant personality characteristics
- Awareness of personal development influence on career

Exploration of career opportunities

- Career information gathering, evaluation and use
- Exploration of global economic, social and technological trends
- Exploration of employment opportunities
- Exploration of learning opportunities

Career planning

- The creation of career vision
- Career decision making
- The creation of career plan

Career implementation

- Personal finances management
- Learning process management
- Job search process management
- Establishing oneself in a labor market
- Career changes management
- Career and personal life balance

Karjera.lt USERS' ROLES

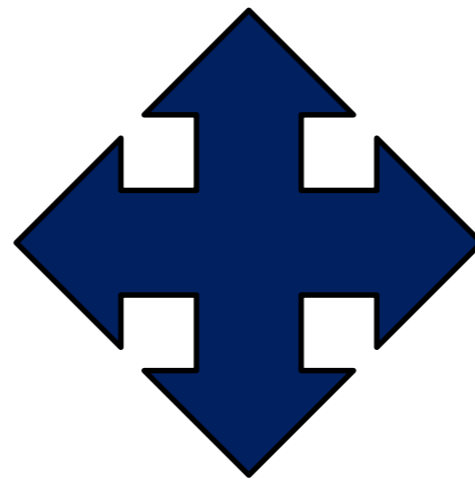
Karjera.lt SERVICES RECIPIENTS



Student/graduate



Employer/organization



Career specialist/counsellor

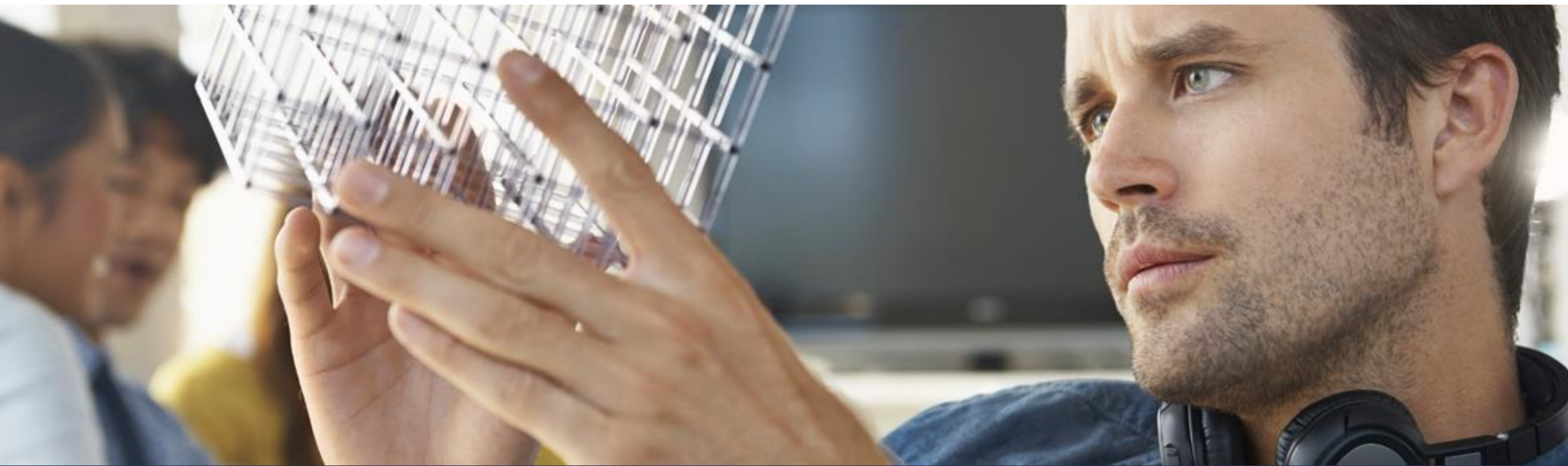


Graduates' career tracking specialist

Karjera.lt USERS

Karjera.lt STRUCTURE: PERSONAL CAREER MANAGEMENT SUBSYSTEM

Subsystem's goal is to provide computerized career management services and interactive tools in order to help students and graduates to make self-assessment, to explore career options, to develop and implement career plans, to track their career progress and manage the personally significant career information



PERSONAL CAREER MANAGEMENT SUBSYSTEM: STUDENT'S ENVIRONMENT

MY
CAREER

My profile

My notes

My tasks

My readings

Messages

KNOW
YOURSELF

About myself

Self assessment tools

Practical tips

EXPLORE
POSSIBILITIES

Career directions

Graduates' career tracking

Employers

Other career possibilities exploration tools

Practical tips

PLAN
CAREER

Career development plans

My finances

Practical tips

FIND A JOB

My CV

Job & internship ads

Employers

Practical tips

OVERCOME
DIFFICULTIES

Tests & questionnaires

Self-directed problem solving guide

About career counselling

Contact with career counsellor

CAREER
LIBRARY

EVENTS AND
TRAININGS

PERSONAL CAREER MANAGEMENT SUBSYSTEM STUDENT'S ENVIRONMENT: SELF-ASSESSMENT TOOLS

TESTAI IR KLAUSIMYNAI

Karjeros vertybių klausimynas

✓ (Išspręstas 2015-09-11) | Rodyti: Tik man

Interesų klausimynas

✓ (Išspręstas 2015-10-25) | Rodyti: Tik man

− Gabumų testai ⓘ

✓ (Išspręsta 15 iš 23) | Rodyti: Tik man

- + Verbaliniai gabumai
- + Matematiniai gabumai
- + Loginiai gabumai
- + Pastabumo gabumai
- + Atminties gabumai
- + Kūrybiniai gabumai
- + Muzikiniai gabumai
- + Erdviniai gabumai

Karjeros valdymo situacijų testas

(Neišspręstas) ✕

Karjeros valdymo kompetencijų klausimynas

✓ (Išspręstas 2015-10-23) | Rodyti: Tik man

Automatic electronic standardized individual report of results is provided:

- definition of the assessed construct
- student's result profile in comparison with the reference group
- the interpretation of results
- recommendations
- matches with job positions' requirements

13 unique standardized students' self-assessment tools for evaluation of:

- career values
- interests
- abilities
- career management competencies

Tools can be used without the help of specialists

MANO GABUMŲ TESTŲ REZULTATAI

Testo sprendimo data: 2015-09-11 - 2015-11-16

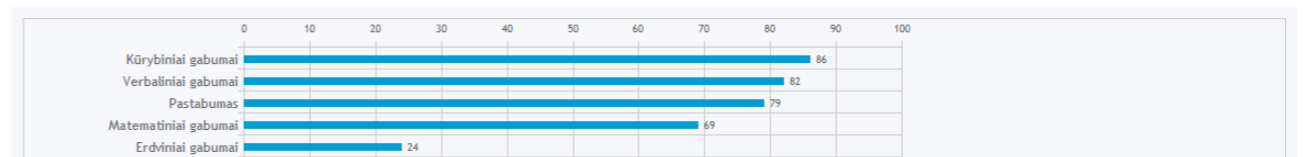
Rodyti: Tik man

ĮŽANGA

Gabumai – asmens kognityvinis ir psichofiziologinis potencialas, sudarantis sąlygas atlikti užduotis be papildomo mokymosi ir / ar papildomų pastangų bei lemiantis tam tikros veiklos sėkmę.

Tai gebėjimas sutelkti dėmesį, įsiminti ir atkurti, suvokti tai, kas svarbiausia, išskirti esminius ir neesminius, tipiškus ir netipiškus požymius, gebėjimas lyginti, sisteminti, klasifikuoti, apibendrinti ir abstrahuoti, konkretizuoti, nustatyti kiekybės ir kokybės, priežasties ir pasekmės santykius, kiekio ir erdvės santykius, gebėjimas išreikšti vaizdus ar mintis žodžiais, pagrįsti savo teiginius, tikslingai elgtis, motyvuoti savo veiksmus ir kt.

MANO GABUMŲ PROFILIS



Atlikti tinkamų pareigybių paiešką

MANO SVARBIAUSIŲ GABUMŲ APRAŠYMAI

Kūrybiniai gabumai – lankstus skirtingų idėjų kūrimas, disponavimas įvairia informacija, skirtingų variantų ir įvairių pusių matymas, problemų sprendimas, remiantis ne tik fantazija.

*Pastaba: Šiame teste vertinamas tik verbalinis kūrybiškumas.

PERSONAL CAREER MANAGEMENT SUBSYSTEM STUDENT'S ENVIRONMENT: CAREER PLANS

KARJEROS IR TOBULĖJIMO PLANAI

Karjeros planas – tai tam tikra veiksmų seka, įgyvendinama siekiant karjeros tikslų. Šie veiksmai susiję su profesijos pasirinkimu, trokštamo išsilavinimo įgijimu, norimo darbo susiradimu, sėkmingu įsitvirtinimu naujoje organizacijoje, paaukštinimu pareigose, nuosavo verslo sukūrimu ir kitais svarbiais ilgalaikiais bei trumpalaikiais karjeros tikslais. Geram karjeros planui turi surinkti pakankamai informacijos apie save bei karjeros galimybes, gebėti apsibrėžti karjeros viziją, turėti karjerai reikalingų išteklių (laiko, socialinių kontaktų, finansų ir kt.) valdymo bei karjeros sprendimų priėmimo įgūdžių.

VIZIJA



Įstoti ir sėkmingai baigti doktorantūros studijas, tapti vienu geriausių savo srities mokslininku Pabaltijo šalyse.

Redaguoti

MANO PLANAI

Kurti naują

Pavadinimas	Pradžia	Pabaiga	Progresas	Svarbu	Rodyti
Susikurti karjeros viziją	2015-10-26	2015-10-30	50%	✓	Tik man
Ištirti savo gabumus	2015-10-22	2015-10-28	33%	✓	Tik man
Karjeros planas	2015-10-26	2015-11-02	33%	✓	Tik man

Students have a free access to one of the country's bank's created personal finance management tool

Students have possibility to:

- envision their career
- set realistic career goals
- make plans how to reach them
- track their performing



Mano finansai
„Swedbank“ Finansų instituto buveinė internete

Mano informacija | Atsijungti

Pradžia | Žinių bankas | Skaičiuoklės | Vedu biudžetą | Mokytojų kambarys | Apie mus

Išlaidos | Pajamos | Santaupos ir tikslai | Biudžeto ataskaitos | Saskaitys išrašo importavimas

Vedu biudžetą

Nuolat veskite savo biudžetą ir valdykite savo pinigus. Žinokite, kam išleidžiate daugiausiai, įveikite silpnynes ir siekite užsibrėžto tikslo.

Mano finansai - susipažinkite
Pagalba pradedantiems

Pradėkite vesti savo biudžetą

Jūs dar nevedate savo biudžeto. Pradėkite rinkti kasos čekius, sekti išlaidas ir valdyti savo pinigus. **Vesti biudžetą**

Jūsų tikslas

Šiuo metu jūs dar nesate išsiekę tikslų. **Išsiekėti tikslą** **Valdyti santaupas**

Mėnesio tema
Moksliečiai finansinių žinių semiasi ne tik iš vadovėlių [Daugiau](#)

Aktualijos
Baltijos šalių draudimo indeksas: pirma saugome turta, paskui – gyvybę [Daugiau](#)

Patarimai
8 pinigų taupymo patarimai, kuriuos siūlo „Swedbank“ fanai [Daugiau](#)

Pradžia | Žinių bankas | Skaičiuoklės | Vedu biudžetą | Mokytojų kambarys | Apie mus

Aktualijos | Mėnesio tema | Mano finansų skaičiuoklės | Finansinis gyvenimo ciklas | Išlaidos | Pajamos | Aktualijų žurnalas | Mokymo medžiaga

PERSONAL CAREER MANAGEMENT SUBSYSTEM STUDENT'S ENVIRONMENT: CAREER PLANS

DARBO IR PRAKTIKOS SKELBIMAI

Raktinis žodis: Karjeros kryptis:

Miestas: Pareigybė:

Skelbimo Nr.: Įdarbinimo tipas:

Organizacija: Dominantys:

Veiklos sritis: CV siūstas:

Skelbimas	Miestas	Paskelbimo data	Galioja iki	Dominantys	Peržiūros
Viešbučio registratorius (-ė) Norvegijoje (DS-0001747) Laikinas, sezoninis darbas Soprana Personnel International, UAB	Norvegija	2016-04-12	2016-05-12	☆	3
Nekilnojamojo turto brokeris (-ė) (DS-0001729) Kita Moredus, UAB	Vilnius	2016-04-12	2016-06-30	★	9
HR Intern (DS-0001746) Praktika Bentley Systems Europe B.V. filialas	Vilnius	2016-04-11	2016-05-02	☆	9
Techninių instrukcijų specialistas (DS-0001745) Visa darbo diena Amston, UAB	Kaunas	2016-04-11	2016-05-01	☆	6
PASTATŲ ADMINISTRAVIMO VADYBININKAS (-Ė) (DS-0001728) Visa darbo diena Mango būstas, UAB	Kaunas	2016-04-08	2016-04-29	★	3

Students can make a specialized search of the job or internship by several criteria:

- Locality
- Name of organization
- Type of organization
- Sector of activity
- Career direction
- Occupation
- Employment type

ORGANIZACIJOS PROFILIS



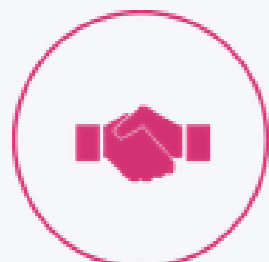
iTree - viena didžiausių informacinių technologijų (IT) bendrovių Lietuvoje. Turime lanksčią ir darnią per 120 specialistų komandą, kuriai vadovauja unikalią ilgametę tarptautinę patirtį savo srityje turintys specialistai bei ekspertai.

UAB iTree Lietuva yra platininis Oracle partneris, turintis Oracle korporacijos suteiktas specializacijas Oracle E-Business Suite, Oracle Database 11g, Oracle Java Enterprise Edition ir Oracle Java Standard Edition srityse. Siūlome plačią IT paslaugų, susijusių su šiomis technologijomis, aibę mūsų klientams Lietuvoje ir visoje Europoje...

Students can view the profile of the interested organization and contact directly with representative of the organization who is responsible for communication with students

Įkūrimo metai:	2009
Darbuotojų skaičius:	50-249
Veiklos sritys:	Informacija ir ryšiai
Pagrindinės karjeros kryptys:	Informacinės technologijos ir telekomunikacijos
Valstybė:	Lietuva
Miestas:	Vilnius
Adresas:	Konstitucijos pr. 7, 09308 Vilnius, Lithuania
Kontaktinis asmuo:	
Pareigos:	
Telefono Nr.:	+370 5 248 7506
El. paštas:	info@itreegroup.eu
Internetinis puslapis:	http://www.itreegroup.eu/

POSSIBILITIES FOR STUDENTS AND GRADUATES



- Possibility for self-assessment
- Possibility to create career plan
- Possibility to find reliable information about career directions, occupations, positions, career possibilities after graduation
- Direct access to organizations
- The search of job or internship
- Availability to get required career support
- Registration to career events, trainings, seminars, counselling sessions
- Possibility to solve career problems on yourself or with a help of career counselor
- Process and store information related to career in one place
-

PERSONAL CAREER MANAGEMENT SUBSYSTEM CAREER SPECIALIST'S ENVIRONMENT

SPECIALIST'S DESKTOP

My services
schedules

My services
reports

Tools for
specialists

Student's
environment

MY CAREER CENTER

Career
center's tools
for students

Career
center's
documents

Career center's
websites
content
management

Administration

SERVICES FOR STUDENTS

Services
management

Dissemination
of information

Students and
graduates
search

Selected
students
groups

Job &
internship ads

SERVICES FOR ORGANI- ZATIONS

Services
management

Employers

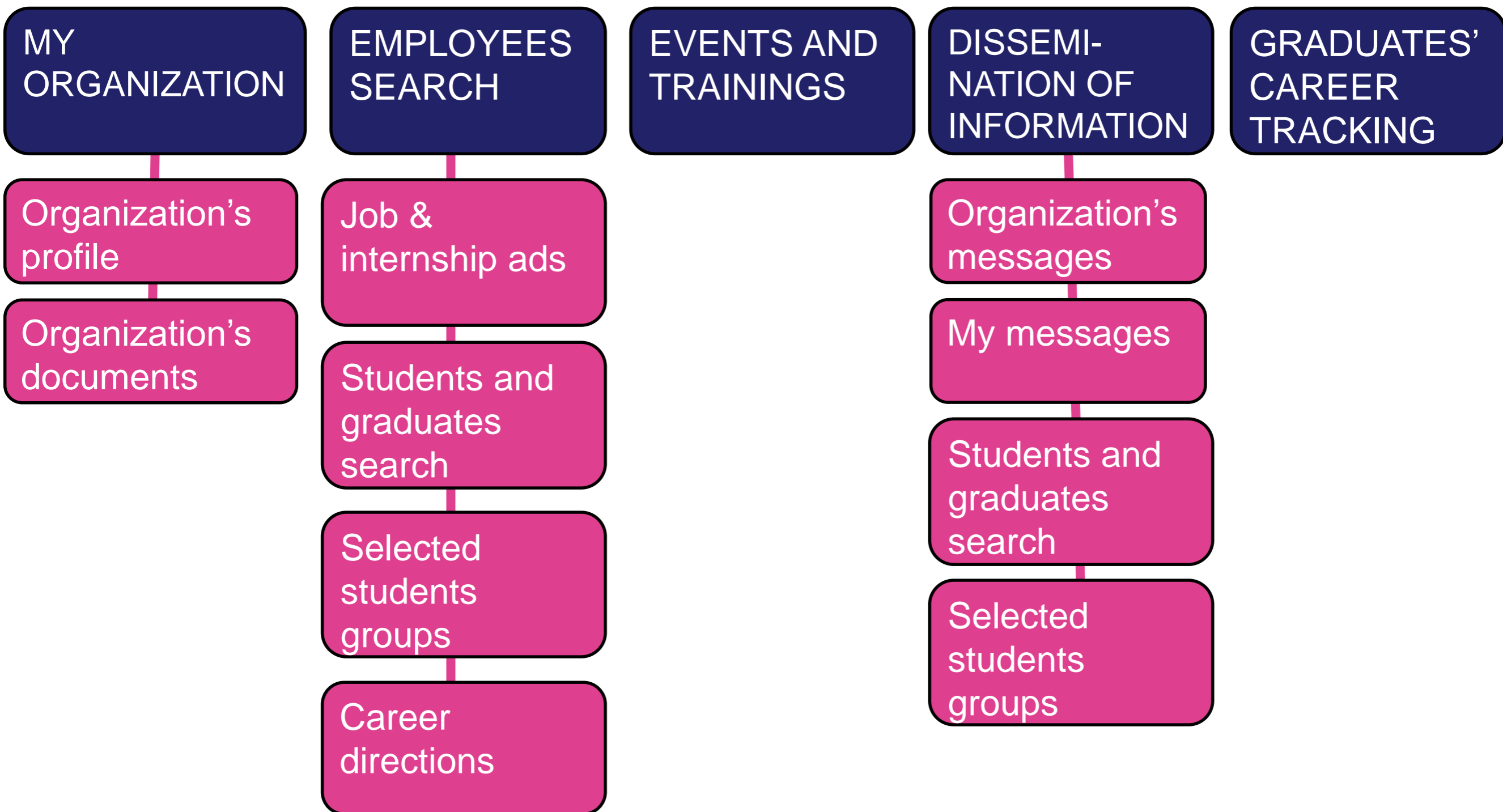
GRADUATES' CAREER TRACKING

POSSIBILITIES FOR HIGHER EDUCATION INSTITUTIONS

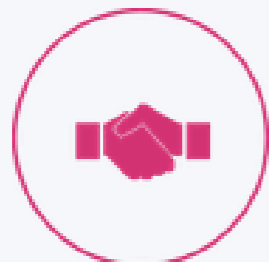


- Possibility to publish information about career management services and organize registration to the seminars or consultations
- Possibility to remotely provide career services
- Possibility to generate career services reports
- Possibility to establish and maintain relationships with students, graduates and representatives of organizations
- Availability of career information resources
- Possibility to run graduates' career surveys
- Possibility to form analytical queries, view query results, generate reports
- Space to publish tracking reports publicly
-

PERSONAL CAREER MANAGEMENT SUBSYSTEM ORGANIZATIONS'S ENVIRONMENT



POSSIBILITIES FOR ORGANIZATIONS



- Possibility to introduce organization
- Publication of proposed job and internship places
- Possibility to make the search of students and graduates according selected organization criteria
- Publication of events, trainings, seminars and other organization's events related to the career management
- Possibility to remotely establish and maintain relationships with students, graduates and HEIs' career specialists
-

Karjera.lt STRUCTURE: GRADUATES' CAREER TRACKING SUBSYSTEM

Subsystem's goal is to provide the tools for graduates' career tracking data collection, management, subjective and objective data analysis and the preparation and publication of graduates' career tracking reports.

OBJECTIVE DATA

Data are collected from:

- state's information systems
- state's registers
- departmental registers

Data are updated twice per year

SUBJECTIVE DATA

Data from regular sociological surveys:

- 6 months after graduation
- 1 year after graduation
- 3 years after graduation
- 5 years after graduation

GRADUATES' CAREER TRACKING SUBSYSTEM MAIN TRACKING INDICATORS

INFORMATION ABOUT A STUDENT

- Demographical characteristics
- Information about general education
- Information about graduated studies
- Information about mobility during studies
- Information about scholarships

INFORMATION ABOUT GRADUATE'S CAREER

- Information about higher education continuation
- Information about graduates occupation
- Information about graduates salary
- Information about graduates current employability situation and employability history

ALTOGETHER 48 INDICATORS

Karjera.lt STRUCTURE: CAREER LIBRARY SUBSYSTEM

Subsystem's goal is to provide access to search career information resources in all 25 consortium higher education institutions' libraries





karjera.lt

LENGVESNĖ KARJEROS PRADŽIA

THANK YOU FOR YOUR ATTENTION

