



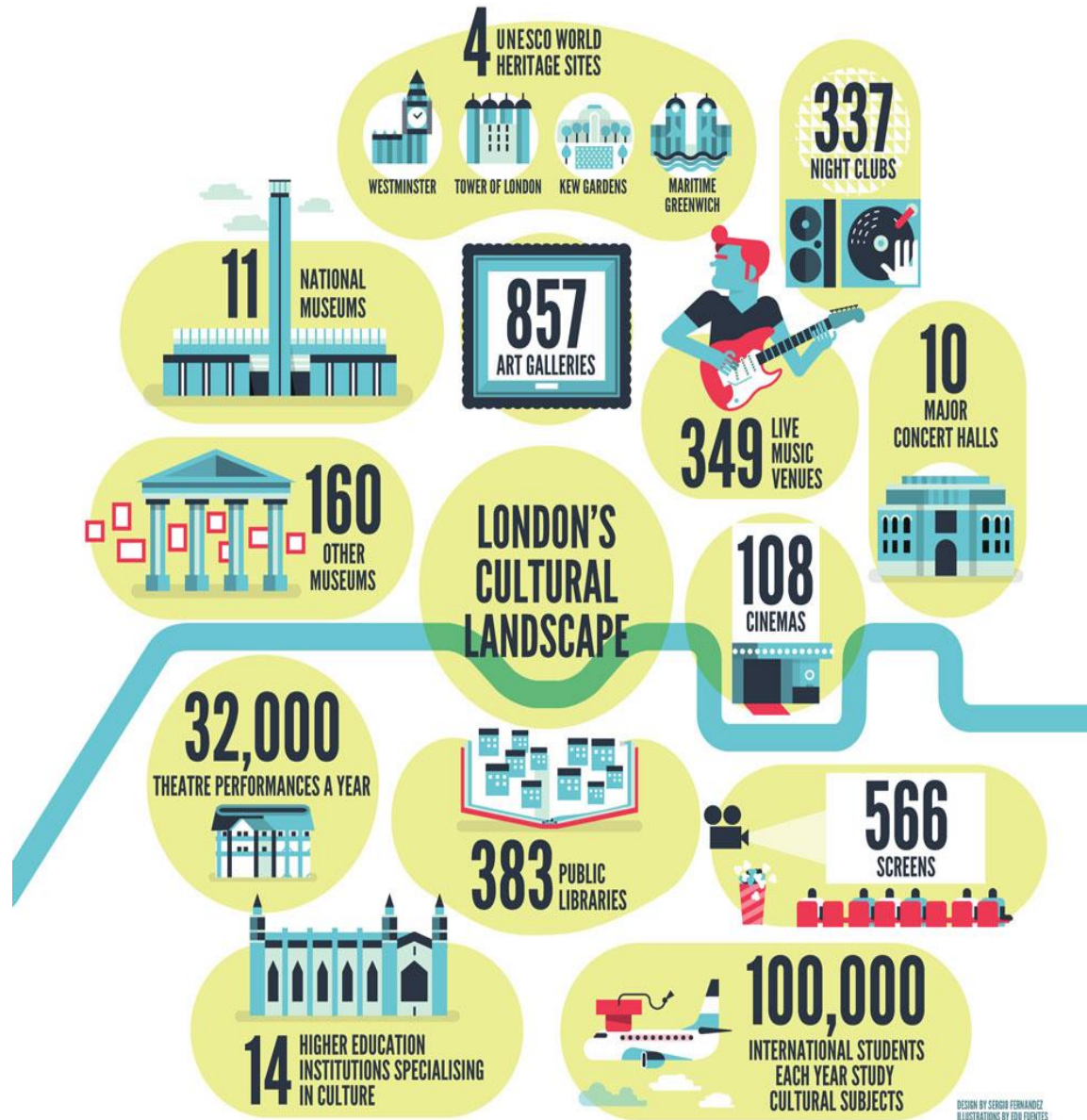
Deborah Bull

Assistant Principal (London)

deborah.bull@kcl.ac.uk

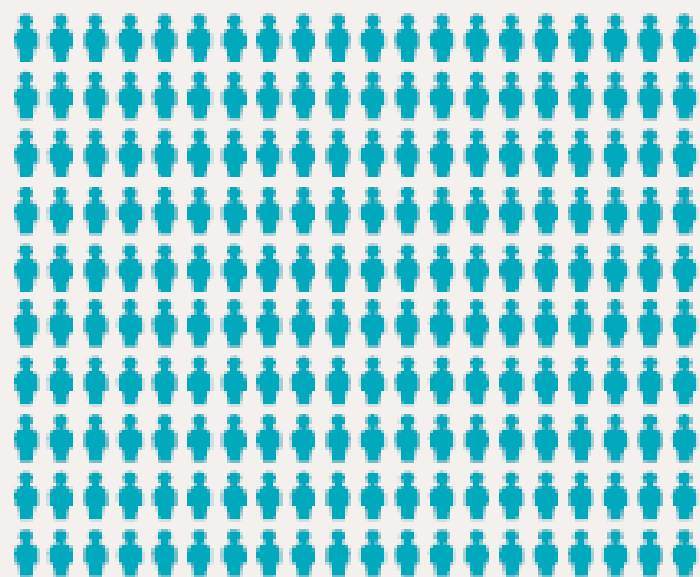
www.kcl.ac.uk/culture

[@CulturalKings](#)



To secure a position for King's as a world leader in cultural engagement, working in partnership to enhance the student and academic experience while adding value and delivering benefits across arts and culture

The year in numbers:



200 students took part in the King's Cultural Challenge



293

opportunities for student employment



207

organisations worked with King's



432

cultural sector professionals engaged with events and projects on **543** occasions



15,585

attendances at exhibitions and workshops in King's



171

academics and PhD students worked with cultural organisations



100%

of Faculties engaged with culture

www.kcl.ac.uk/culture

Connecting
through culture

2014–15



Privacy

DONMAR®



My first inclusive ballet



My First Ballet: Swan Lake

2 Apr 2015 – 16 May 2015



Illustration: Mark Ruffle



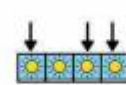
Artistic Director



The Artistic Director is in charge of the Company.



They choose the ballet and Dancers.



The Artistic Director often choreographs new ballets for the Company.

SHAKESPEARE 400

By me William Shakespeare A life in writing


An exhibition telling the story of Shakespeare's
life in London through the paper trail left behind

Somerset House East Wing, 3 Feb–29 May 2016

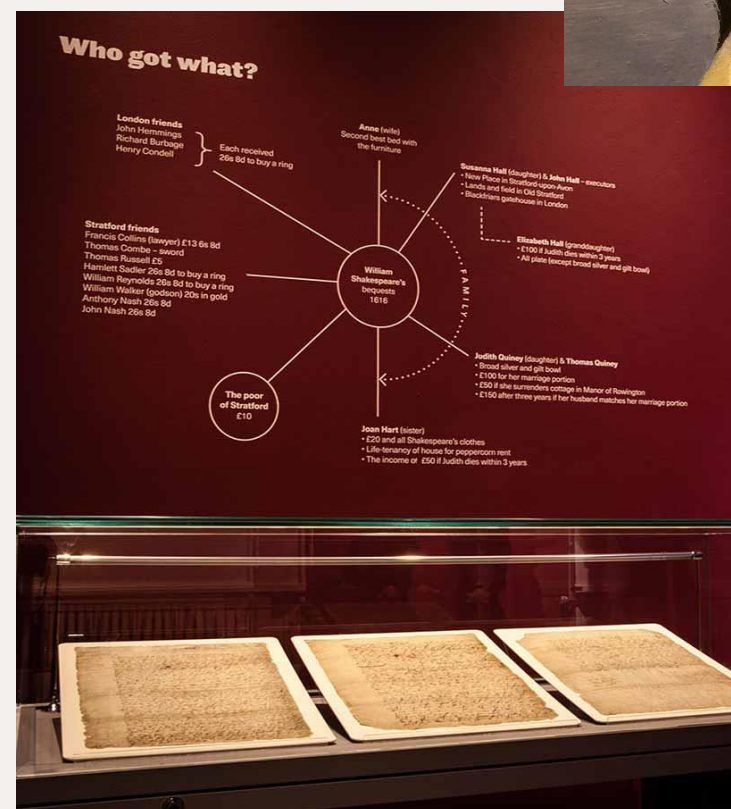
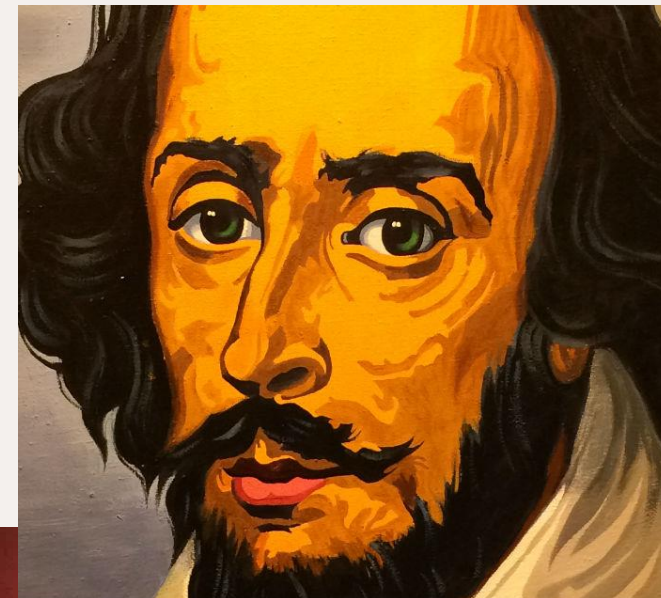
Tue–Sun 10.00–18.00
(until 20.00 Thurs)

Inigo Rooms
Somerset House East Wing
King's College London
Strand, WC2R 2LS

Book now: bymewilliamshakespeare.org
#BymeShakespeare

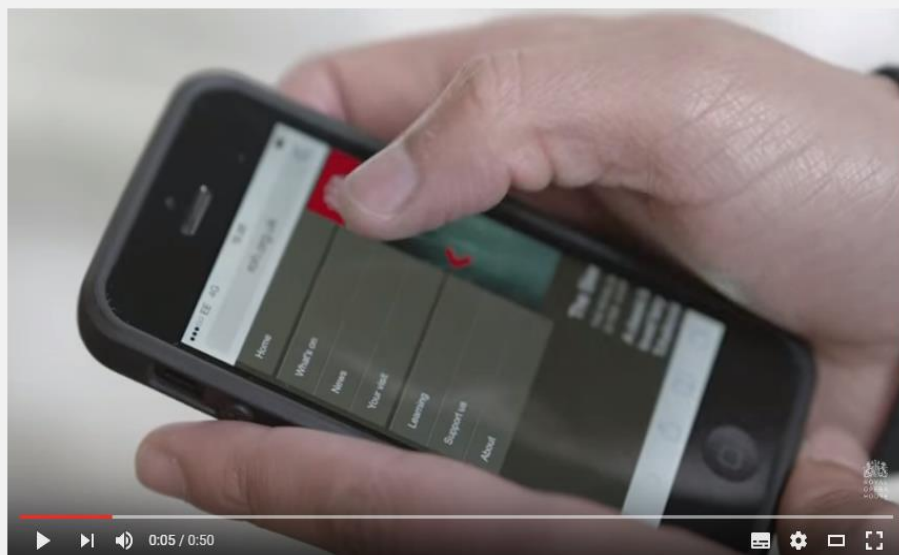
 The National Archives

 KING'S
College
LONDON





POP



Royal Opera House digital guides



Royal Opera House

Subscribe 180,441

10,662 views

+ Add to Share More

191 2

Published on 23 Feb 2014

Take a look at the promo film for our new digital guides, which offer exclusive content wherever you are: <http://www.roh.org.uk/news/wherever-y...>

Home > Publications > Giselle Digital Programme



Giselle Digital Programme

A digital programme containing specially selected films, articles and exclusives to bring you closer to the production.

£2.99

Do you have a promo code? -

Add to basket

Already purchased this? Sign in below to access your digital programme.

Sign in to view



LOTTERY FUNDED



Supported by Nesta, Arts & Humanities Research Council and public funding by the National Lottery through Arts Council England



Introduction to the ballet



Watch: the trailer



Synopsis

My primary school is in the museum



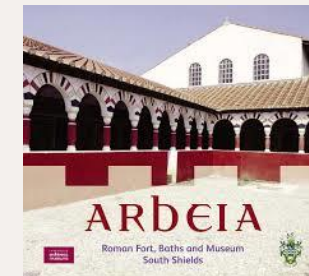
GARBERS & JAMES Architects, London, UK



Kensington Children's Centre

Amgueddfa
Genedlaethol
y Glannau
STORIO DDIWYDIANT &
BLAENHARDROD CENNI

National
Waterfront
Museum
VALLEY STORY OF
INDUSTRY & INNOVATION



SHAKESPEARE
LIVES IN
2016

BFI Film
Forever



barbican



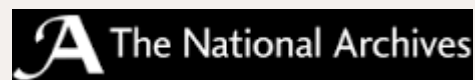
London Philharmonic Orchestra



GLYNDEBOURNE



SHAKESPEARE400

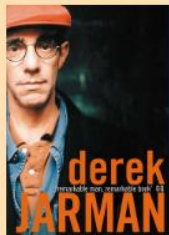


National
Theatre

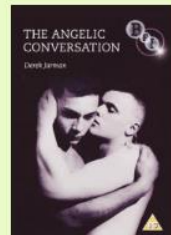
Jarman 2014



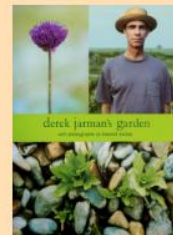
Listings [○ Films](#) [○ Exhibitions](#) [○ Talks](#) [○ Conferences](#)



Authorised biography of Derek Jarman - film director, painter, gay activist, writer, gardener.



A range of Derek Jarman's films, digitally restored and remastered, are available from the BFI



Derek Jarman's Garden with photographs by Howard Sooley, available from Thames & Hudson



Derek Jarman's Sketchbooks, by Stephen Farthing & Ed Webb-Ingall (Thames & Hudson, 2013)



A facsimile edition of Jarman's sole, early, extremely rare poetry book, originally published in 1972.

Event Archive

0.06.14



Talk

Coach trips to Prospect Cottage
Prospect Cottage
7.06.14 – 8.06.14

Join us on a rare chance to visit Derek Jarman's former residence, Prospect Cottage, where he lived in the latter stages of his life. Famous for the sculpture garden which Derek built on the shingle shoreline, this is an opportunity to venture inside the cottage.

[More Info & tickets](#)

11.05.14



Exhibition + Talk

Zabludowicz Collection and London Borough of Camden
Zabludowicz Collection and Swiss Cottage Library Gallery
31.03.14 – 11.05.14

'Another way of reading' is an evolving exhibition produced by Frances Scott exploring different perspectives of the city, bringing together the work of Derek Jarman with contemporary art.

[More Info & tickets](#)

6.04.14



Film + Exhibition

Derek Jarman: Blue
Tate Modern
28.10.13 – 6.04.14

A free screening of Derek Jarman's *Blue* within the collection display galleries at Tate Modern. Level 4: Structure & Clarity, Room 6

[More Info & tickets](#)

31.03.14



Exhibition

Film London Jarman Award Shorts Online
BFI Player
7.02.14 – 31.03.14

The BFI Player presents a selection of films commissioned for Channel 4 as part of the Film London Jarman Award to view online, programmed as part of the BFI's current Derek Jarman season.

[More Info & tickets](#)

30.03.14



Film + Talk

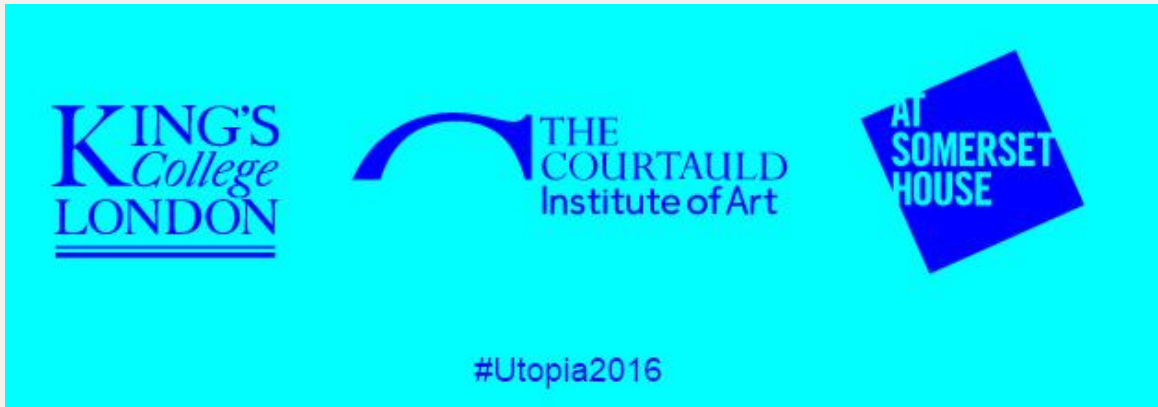
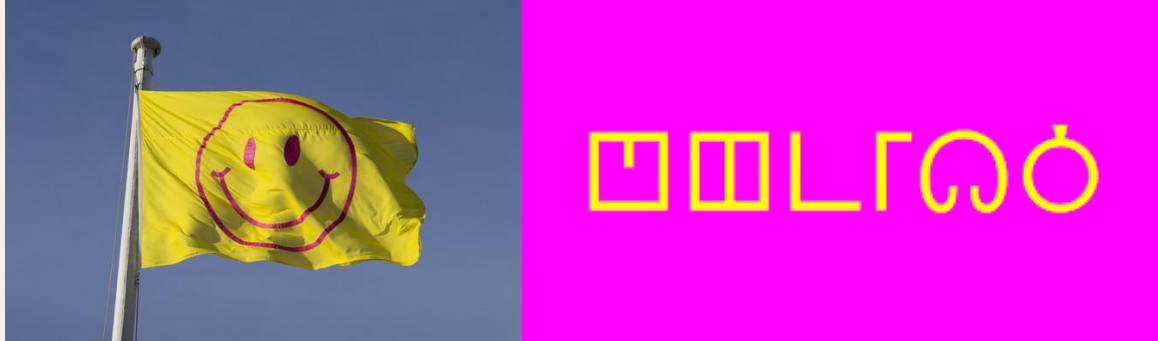
Oxford Literary Festival
Ashmolean Museum, Oxford
30.03.14 2:00pm

Will Gompertz will be in discussion with Stephen Farthing and Ed Webb-Ingall, co-editors of *Derek Jarman's Sketchbooks*, and this will be followed by a showing of *Jarman's 'Glitterbug'*, introduced by James Mockay.

[More Info & tickets](#)



Utopia2016



Paths to Utopia: The commissions



ALL THE THINGS YOU ARE NOT YET

This work celebrates the possibilities of In Vitro Fertilisation (IVF) with an interactive textile artwork that will explore some of the imagery and issues around IVF and parenthood.



DISCORD?

This installation invites visitors to examine multiple perspectives and ideals of home ownership, materiality and economic security, through an embodied, and multi-sensory experience.



IN OUR HANDS

This work will give audiences the chance to experience a collection of intercultural Utopian expressions drawn from Navajo designs, to Roger Fry and Slavoj Žižek, and our stories of creation.



THE NAMING OF CLOUDS

This performance and installation – partly installed across the Quad – will take the audience on a walk through the clouds, imagining how a cloud society would live in the landscape of the skies.



NIGHT SCHOOL ON ANARRES

This project conducts an education experiment by 'inviting' members of the public onto the anarchist planet Anarres to participate in classes that help them to understand how language can be used to imagine alternative ways of living.



WE ACCOUNT THE WHALE IMMORTAL

This ever-changing film and corresponding one-off performance, explores the arrival of three mythic whales in the Thames, from the 17th to the 21st century, as evocative emblems of utopian intent.



WE'RE HERE: SINGING OUR WAY

This national scratch choir will investigate the everyday pleasures, stresses and



UTOPIAN LAB

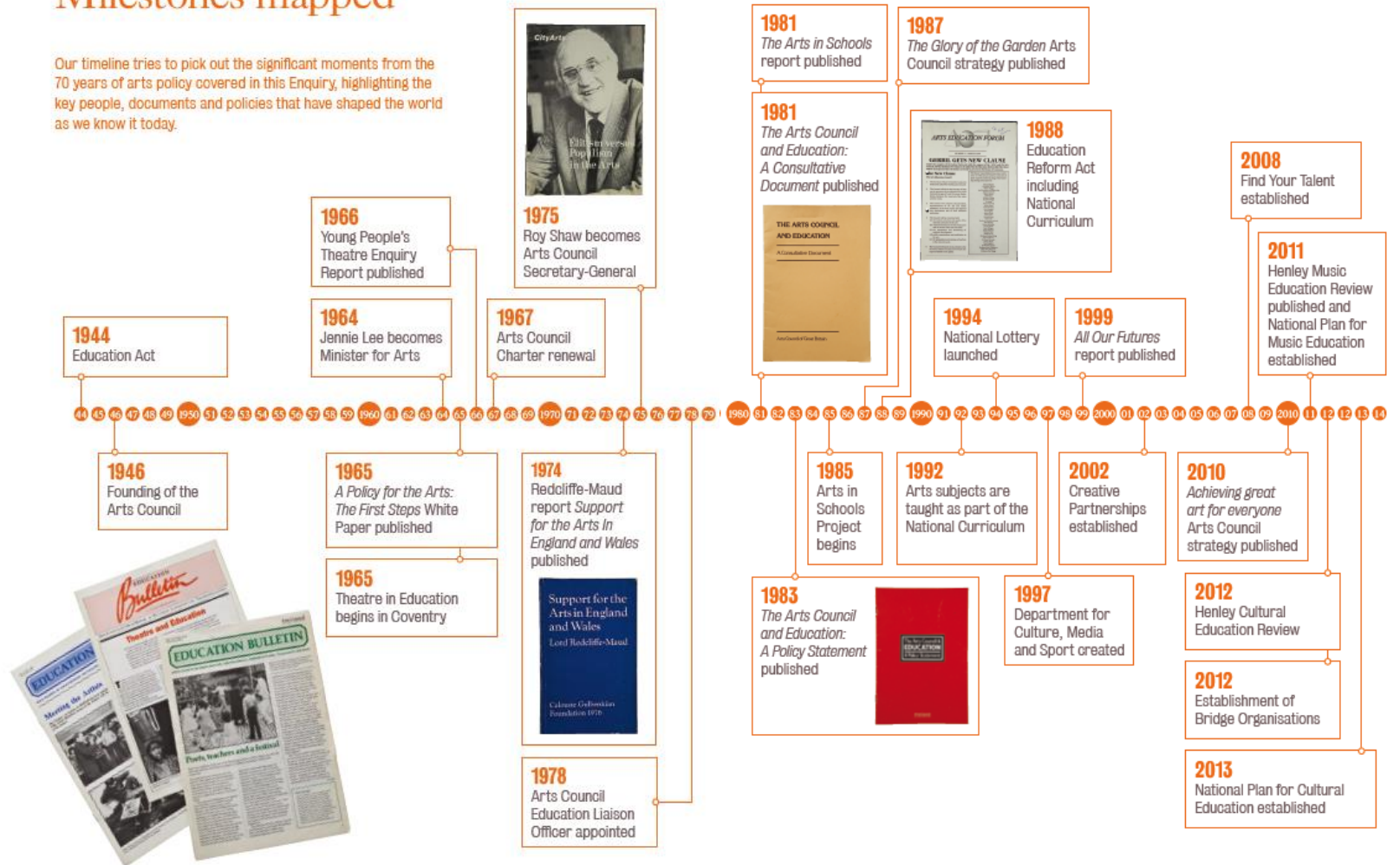
A project partnering craft and medical professionals to demonstrate the mutual

Step by Step: arts policy and young people 1944-2014



Milestones mapped

Our timeline tries to pick out the significant moments from the 70 years of arts policy covered in this Enquiry, highlighting the key people, documents and policies that have shaped the world as we know it today.



Art of Major Events



Tracking public attitudes and behaviours relating to culture and major events

King's annual tracker survey* is run by Neilsen and has sought the views of 6,000 UK adults so far. The January 2015 findings showed that:



73% of people think that UK towns and cities should continue to bid to stage major sporting and cultural events

54%

believe that major sporting events are enhanced when culture is included in the programme

52%

think more money should be spent on the arts locally



89% of respondents expressed some interest in the arts – higher than those who expressed an interest in sport (83%)

* Tracking study administered online by Neilsen in two waves (June and October 2014) building on an earlier 2013 study. Sample criteria were nationally representative UK adults aged 16+ with a sample size of just over 2,000 per wave.

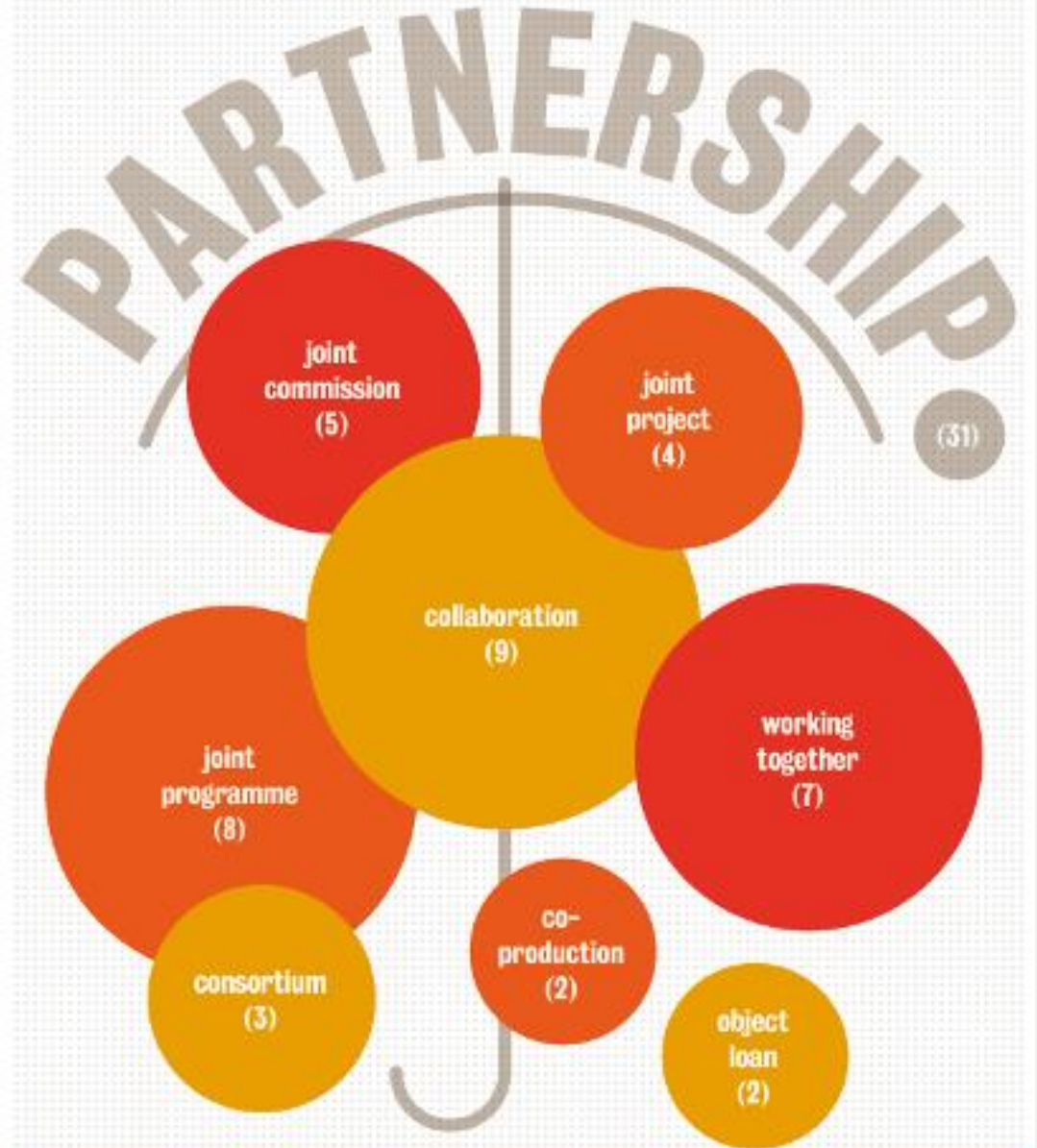
Art of Partnering

BBC

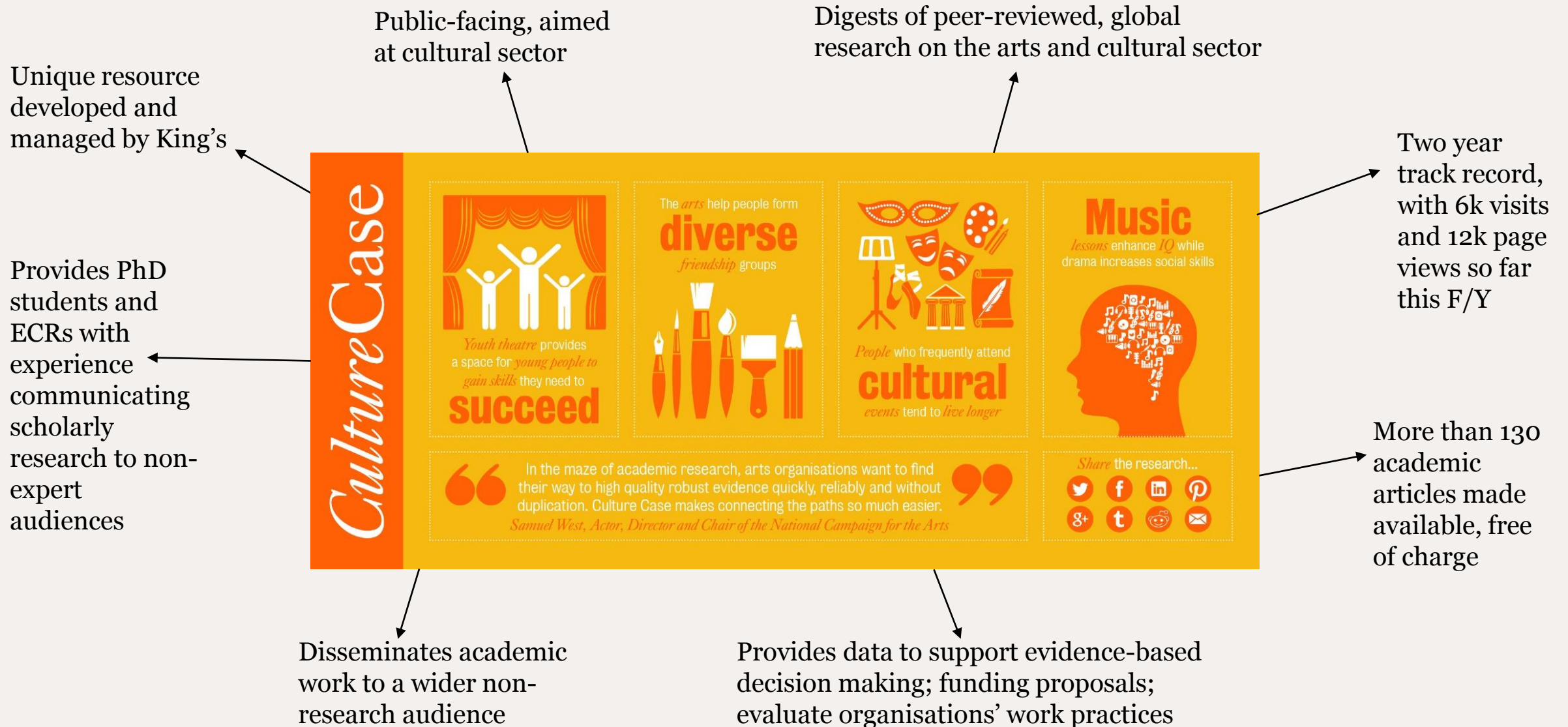


Size of circle is relative to the number of times each term was mentioned

Vocabulary used to describe partnership



CultureCase.org



- Signpost the front door
- Invest in third spaces and boundary spanners
- Build networks
- Listen
- Collaborate
- Learn



Across King's College London, arts and culture support the university in its ambitions to deliver:

- world-class education
- an exceptional student experience
- research that drives innovation, creates impact and engages in London and beyond.



Deborah Bull

Assistant Principal (London)

deborah.bull@kcl.ac.uk

www.kcl.ac.uk/culture

[@CulturalKings](#)