



UNIVERSIDADE  
**NOVA**  
DE LISBOA



# **Nova University and the Lisbon City Hall**



-Nova University, Lisbon (NOVA) is scattered by what we can call “Big Lisbon”.

- Big Lisbon includes **4 City Halls: Lisbon** (FSScH, Law, 3 Health Schools, IMS), **Almada** (FScT), **Oeiras** (ITQB) and **Cascais** (SBE).



## Universidade NOVA de Lisboa

- NOVA has good *political relations* with all these City Halls, naturally, some are better than others.
- *Academic and scientific relations* with these City Halls are, of course, quite another matter.
- Usually these academic and scientific relations start **bottom – up** (e.g., a former student of Nova has a job in a specific Service of a certain City Hall, a certain project needs to be designed, ...).
- Some of these relations evolve to the *Academic Unit level* (e.g., FScT and Almada City Hall; FSScH and Lisbon City Hall).
- Seldom, if ever, these *academic and scientific* relations progressed to the **University / City Hall** level.



- In what follows, I will briefly focus on Nova University relation with Lisbon City Hall at this last level, more specifically, on the sole *academic and scientific* relation that was attempted (till 2016) and failed (at least till now).

-Than Francisco Caramelo will focus on what seems to be a case of success, but time will tell, if I'm right about it.



In the first months of 2014, under the initiative of the by then Mayor of Lisbon (António Costa), all Rectors of the Lisbon universities that have a seat at CRUP, were invited to have a meeting in order to see how the City Hall and these universities could foster their collaboration to the benefit of the municipality.

The Lisbon City Hall (CML) had a general agenda of local challenges and needs (“*Carta Estratégica de Lisboa*”), and the universities were kindly asked to think about possible contributes to meet them.

This was received unanimously as a great idea full of promising outcomes.



The Rector of Nova University, António Rendas, assigned me the task of coordinating this project and presenting our proposals to CML.

By 23<sup>rd</sup> of July of 2014 a six work-package proposal, totalizing 178 pages, was delivered at CML by Nova University.

This was the result of 17 meetings, *at Rectorate / University level*, in which participated 48 academics, of *all* NOVA's Academic Units.

Representatives of CML (some of them at a very high level) were present in 3 of these meetings.

## Commonalities of the 6 work-packages (WP):

1. They all had “Lisbon” in their title + a specific qualification that was informative of the particular challenge that was going to be addressed:

- ✓ “Digital Lisbon” (tourism, culture, heritage),
- ✓ “Healthy Lisbon” (e.g., healthy aging, mental health and addiction issues),
- ✓ “Maritime Lisbon” (e.g., port traffic and maritime economy),
- ✓ “Resilient Lisbon” (e.g. building conditions and earthquake threats),
- ✓ “Efficient Lisbon” (e.g., traffic circulation),
- ✓ “Solidarity Lisbon” (e.g., social inclusion).



2. They all started with a description of a particular challenge and how it was going to be addressed.
3. They all were broken down in specific actions (described with some detail).
4. They all had an academic coordinator and an academic team.
5. They all identified at least one CML Service that could be involved and 'teamed up' with the academic team.
6. They all identified at least two sources of possible funds (outside Nova and CML) to which funding proposals could be submitted.



In three WP (“Solidarity”, “Healthy”, “Digital”), NOVA made it clear that it was interested in coordinating them at academic level, but was open to the participation of other Lisbon universities.

In the other three WP (“Maritime”, “Resilient” and “Efficient”), NOVA was quite open to accept academic coordination from other Lisbon universities (if that turned out to be the case our appointed coordinators would then become adjunct-coordinators).

“**Solidarity Lisbon**” was a ‘terrific’ proposal targeted to *Lisbon BIPs* and *ZIPs* and focused on issues of *social inclusion*.

It would gather together NOVA’s academics and students from Medicine, Humanities, Social Sciences, Law, and Economics.

It would have an ‘headquarter’ in the BIPs or ZIPs, facilities to be assigned by the CML.

It would be implemented in close articulation with local agents and stakeholders (schools, sports group, cultural associations, etc.).

It would start with one pilot BIP and then, building up from there, would replicate to other BIP and ZIP.

Some volunteers residing in antecedent BIP & ZIP would be present in the successive replications, and act there as magnets.

The overall six work-packages proposal was highly praised by CML and several meetings took place, with different people involved, trying to sort out how to implement them.

Several months of unsuccessful conversations followed and not one single work-package was implemented.



## *What went wrong?*

### *From CML side:*

- Lack of transparency (not clear what were the forces pro and con in presence: from CML services, other universities, politics?)
- Lack of hard decisions (no: "we want this but not that", "this is not for NOVA, but for that other university", ...).
- Lack of traction (no real work was done with CML Services).
- Lack of continuity: the Mayor become PM, and no 'liaison' was assured with the new Mayor.

## *What went wrong?*

### *From NOVA side:*

- Insufficient interdisciplinary approach: most WP (less so the “Solidarity”, “Digital” WPs) were a ‘single view’ approaches, thus lacking more integrated solutions to some challenges.
- Insufficient accentuation of the collaborative aspect of each WP: no *previous* teaming up with CML services, no *real knowledge* of the work done there to address each challenge.
- Insufficient stress on the innovative / creative aspect of each WP: no attempt to show that the proposed solution is *the best* and *not available* on the market or ‘in house’ at the CML.



*How damaging these things may be?*

*Quite damaging:*

After a few months the academics were completely disappointed.

I think that CML itself was rather uncomfortable with this outcome.

Possibly some proposals are by now out-dated and need revision, if they were now selected to be implemented.

Mutual trust was unnecessarily shaken

“And now, something completely different”: Francisco Caramelo is going to describe you a much more successful experience.



*Painéis de São Vicente de Fora. Pintura portuguesa do séc. XV, óleo sobre tela.*

+ Lisboa



FACULDADE DE CIÊNCIAS  
SOCIAIS E HUMANAS  
UNIVERSIDADE NOVA DE LISBOA







**MAKING OF UTOPIA A REALITY THAT  
ONE CAN LIVE IN THE CITY**



## **FCSH +Lisboa – KNOWING AND TELLING THE CITY**



## Memória para todos: partilhar Lisboa do passado

📅 06/10/2016 👤 FCSH +LISBOA



O património de Lisboa é uma narrativa histórica e cultural em contínua construção para a qual há um contributo decisivo: as memórias dos seus cidadãos.

Ler mais ➔

### FCSH +LISBOA



Descubra a cidade e as suas *estórias* a partir da Faculdade de Ciências Sociais e Humanas da Universidade Nova de Lisboa. Conheça mais Lisboa. [ler mais]

### PROCURAR

### ESTUDAR LISBOA NA FCSH/NOVA

História de Lisboa Medieval

UC do mestrado em História (aberta a alunos externos) | Saber +

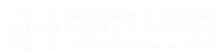
História de Lisboa

UC da Licenciatura em História (aberta a todos os alunos) | Saber +



# Memória para todos: partilhar Lisboa do passado

06/10/2016 FCSH + LISBOA



O património de Lisboa é uma narrativa histórica e cultural em contínua construção para a qual há um contributo decisivo: as memórias dos seus cidadãos.

Fotografias, registos escritos, testemunhos orais do quotidiano... São as memórias pessoais e familiares relativas a momentos e processos históricos que constroem também o património de Lisboa. O projeto "Memória para Todos", desenvolvido pelo Instituto de História Contemporânea (IHC) da FCSH/NOVA, partiu dessa premissa para convidar os cidadãos a partilhar as suas memórias e registos sobre épocas, momentos históricos ou espaços portugueses.



## INTERVIR

### Mural da Revolução dos Cravos nas paredes da FCSH/NOVA

06/10/2016 FCSH +LISBOA



Símbolos e valores da Revolução dos Cravos são os protagonistas do mural de 15 metros, que ganhou vida no exterior da Faculdade de Ciências Sociais e Humanas de Universidade Nova de Lisboa (FCSH/NOVA), na Avenida de Berna.

Ler mais ▶

### FCSH +LISBOA



Descubra a cidade e as suas *estórias* a partir da Faculdade de Ciências Sociais e Humanas da Universidade Nova de Lisboa. Conheça mais Lisboa. [ler mais]

### PROCURAR

Pesquisar ...

### ESTUDAR LISBOA NA FCSH/NOVA

#### História de Lisboa Medieval

UC do mestrado em História (aberta a alunos externos) | Saber +

#### História de Lisboa

UC da Licenciatura em História (aberta a todos os alunos) | Saber +



Algueirão-Mem Martins

Mira-Sintra

Belas

Famões

Odivelas

Olival Basto

Sacavém

MAPA



Dados cartográficos ©2016 Google, Inst. Geogr. Nacional | Termos de Uso

## Conhecer Lisboa antiga com vista para o Tejo

02/10/2014 FCSH + LISBOA



Sabia que, quando foi construída a Estação de Santa Apolónia, as águas do Tejo tocavam na sua parede lateral? Esta é uma das curiosidades mostradas numa exposição da Câmara Municipal de Lisboa em colaboração com a FCSH/NOVA, que retratou 160 anos de transformações na frente ribeirinha.

### FCSH + LISBOA



Descubra a cidade e as suas *estórias* a partir da Faculdade de Ciências Sociais e Humanas da Universidade Nova de Lisboa. Conheça mais Lisboa. [ler mais]

### PROCURAR

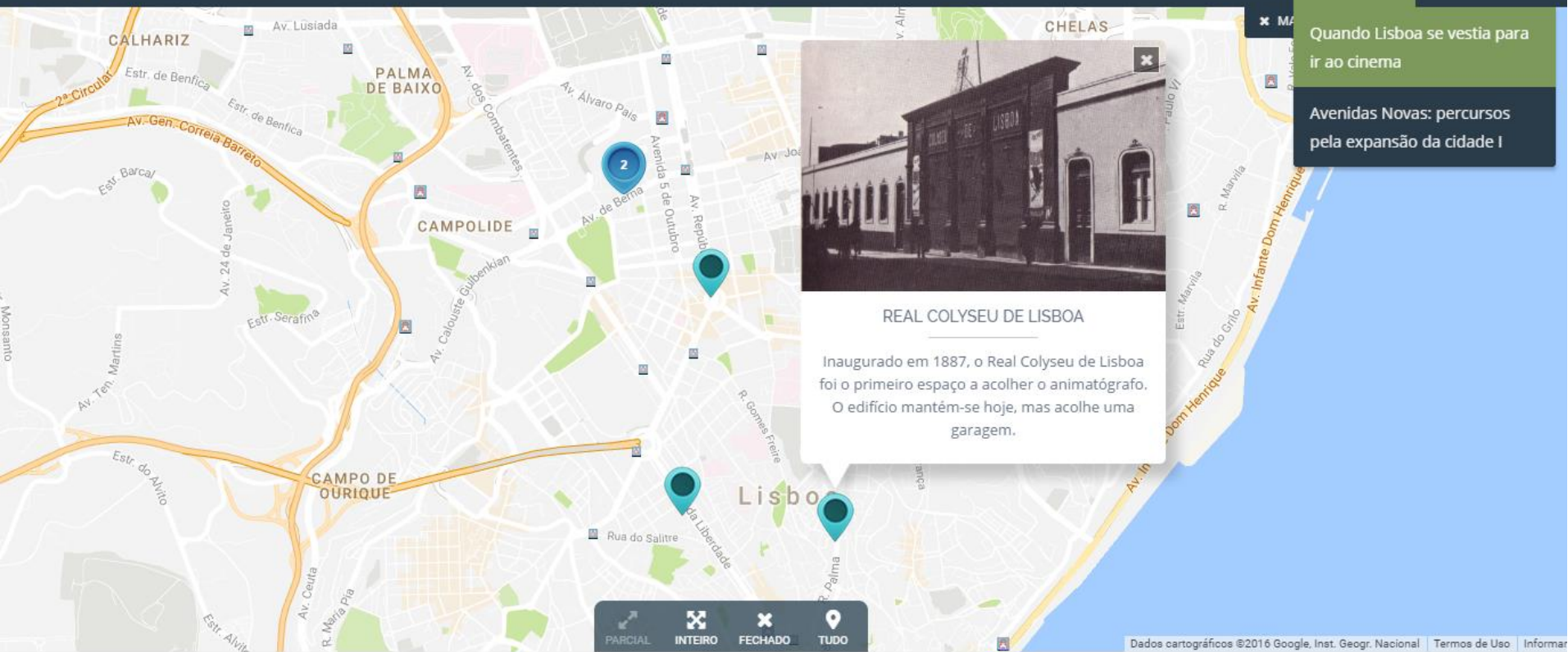
### ESTUDAR LISBOA NA FCSH/NOVA

#### História de Lisboa Medieval

UC do mestrado em História (aberta a alunos externos) | Saber +

#### História de Lisboa

UC da Licenciatura em História (aberta a todos os alunos) | Saber +



Quando Lisboa se vestia para ir ao cinema

Avenidas Novas: percursos pela expansão da cidade I

## Quando Lisboa se vestia para ir ao cinema

📅 24/08/2016 👤 FCSH + LISBOA



## FCSH + LISBOA



Descubra a cidade e as suas *estórias* a partir da Faculdade de Ciências Sociais e Humanas da Universidade Nova de Lisboa. Conheça mais Lisboa. [Ver mais](#)



## TO EXPLORE LISBON WITH US

---



**REAL VISITS, WALKING BY THE CITY...**

**WEBSITE MENUS “KNOW” AND “INTERVENE” PLACED IN LOCATIVE MEDIA**

**RESEARCH ON THE WEBSITE BY SUBJECTS, TIMES AND TERRITORIES**

**A PROJECT WITHOUT EXPIRATION DATE**

**Available soon to discover Lisbon...**

