

# **1<sup>st</sup> UNICA "University, Culture and the City"**

## **Conference**

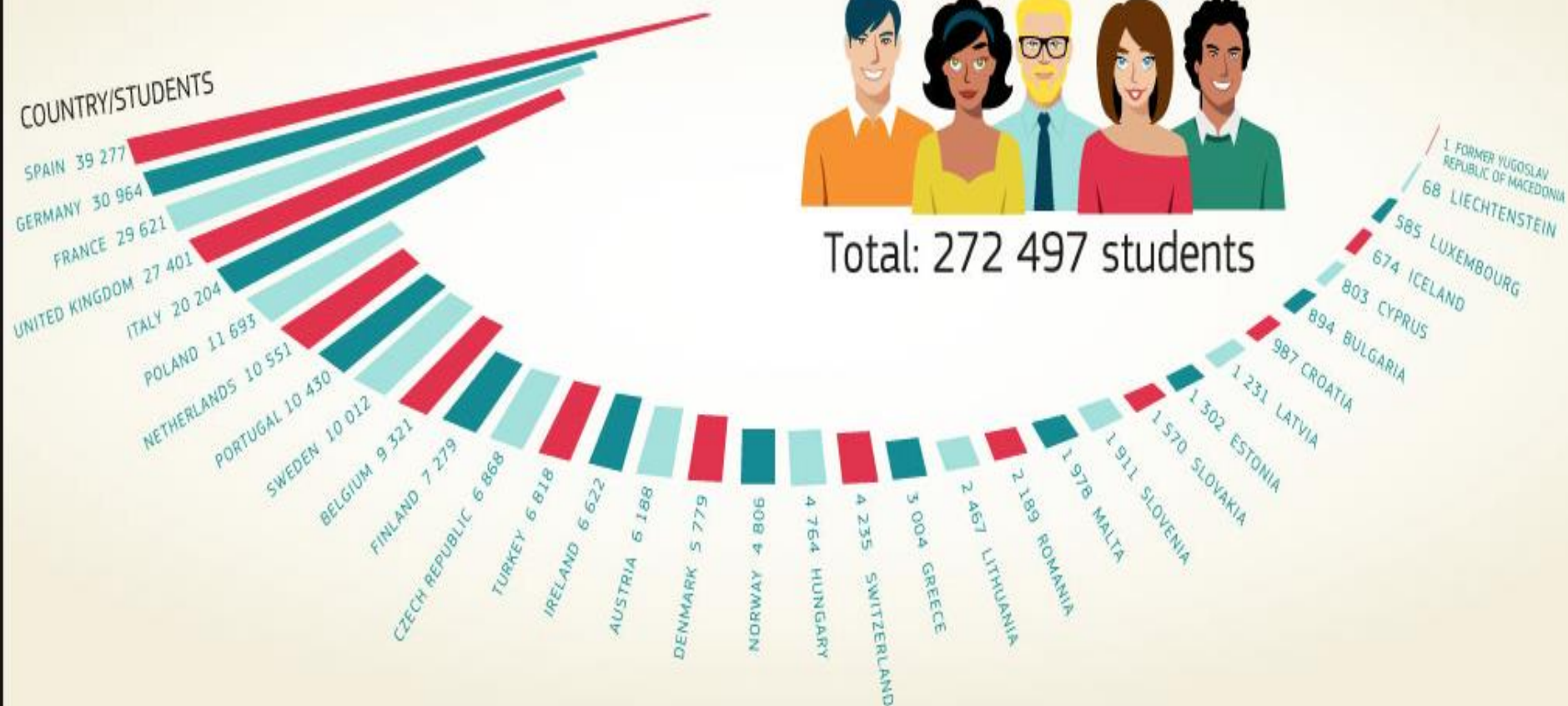
“Comparative Perspectives on International Students’ Impact  
on Urban Development & Multicultural Citizenship”

**Michael Baum**  
**FLAD & Study in Portugal Network**

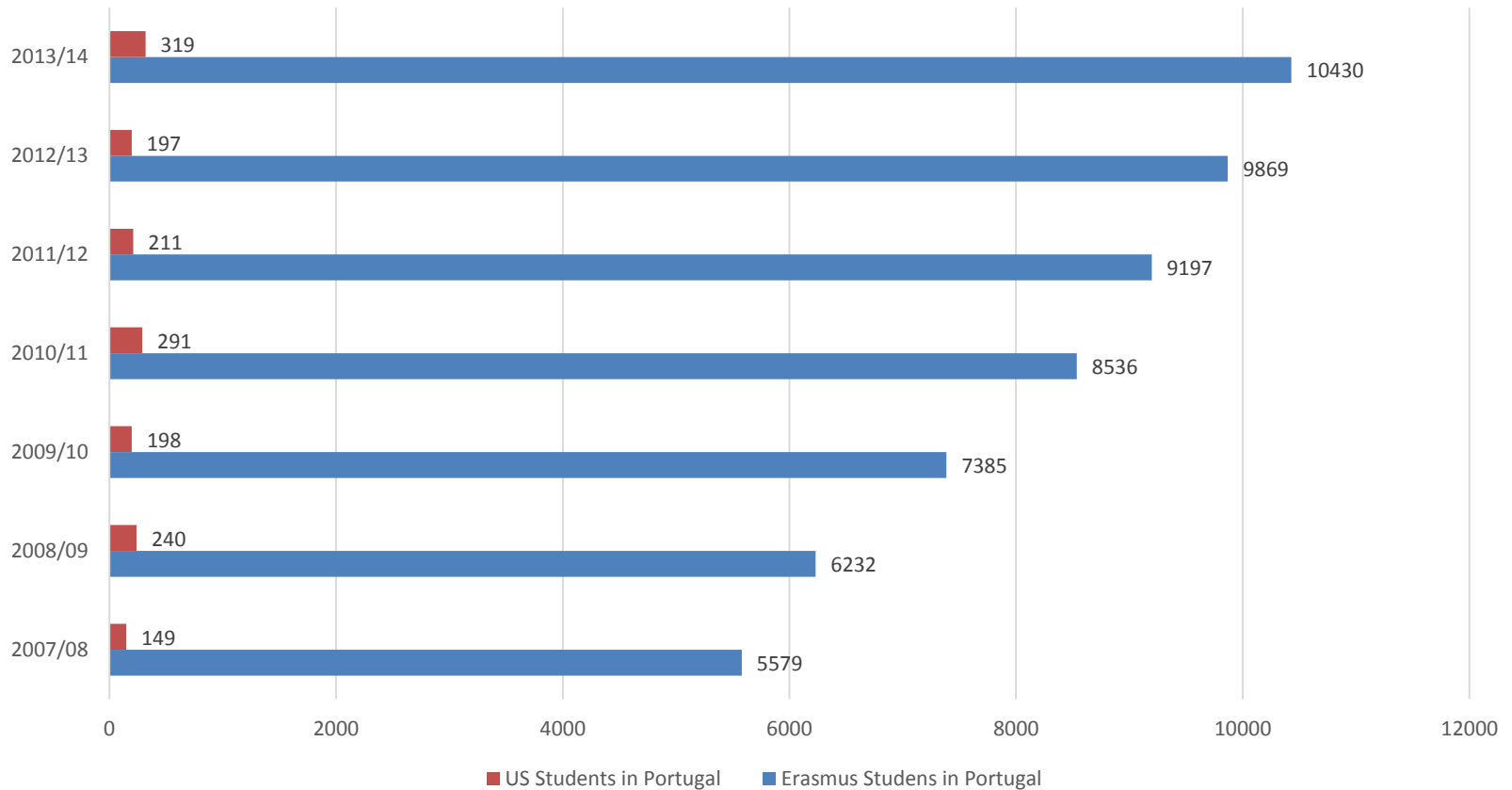
[Michael.baum@flad.pt](mailto:Michael.baum@flad.pt)

# European Students Discovering Portugal...

## Erasmus most popular destination countries 2013-2014



## Erasmus in Portugal vs USA



Source: Erasmus higher education statistics 2013-2014, European Commission

# US students in Portugal vs. Other EU States + Brazil

- Austria – 2,744
- Belgium – 1,458
- Croatia – 330
- Czech Republic – 3,572
- Denmark – 3,545
- France – 17,597
- Germany – 10,377
- Greece – 3,066
- Hungary – 806
- Ireland – 8,823
- Italy – 31,166
- Luxembourg – 357
- Netherlands – 2,615
- Poland – 601
- Spain – 26,949
- Switzerland – 1,809
- Turkey – 2,163
- United Kingdom – 38,250
- **BRAZIL – 4,226**

**Portugal – 319 (!)**

**Ponto de Situação 2015-17**

# Study in Portugal Network

*"A flexible study abroad experience  
designed for US students"*

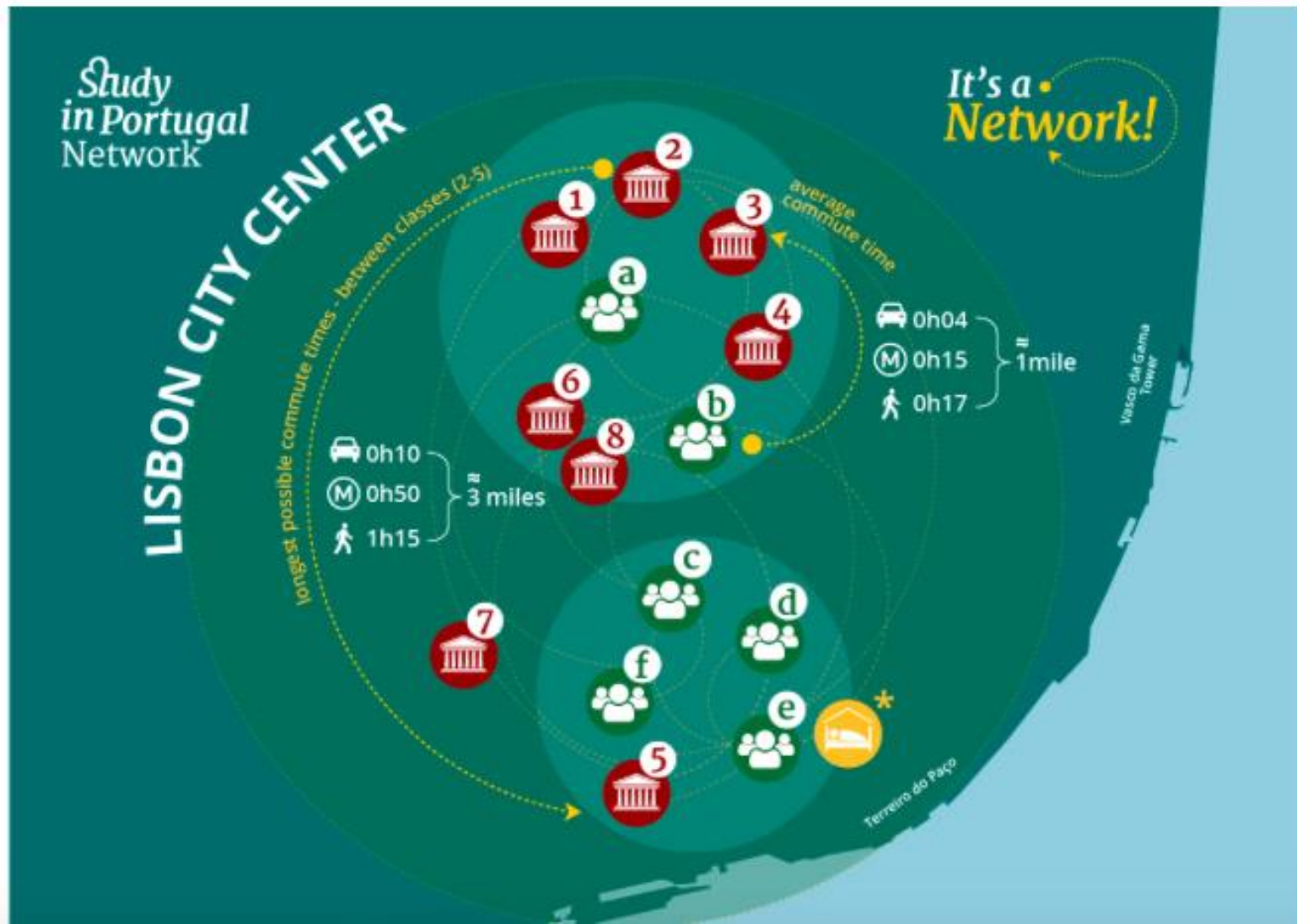


POWERED BY  
**LUSO-AMERICAN**  
FOUNDATION

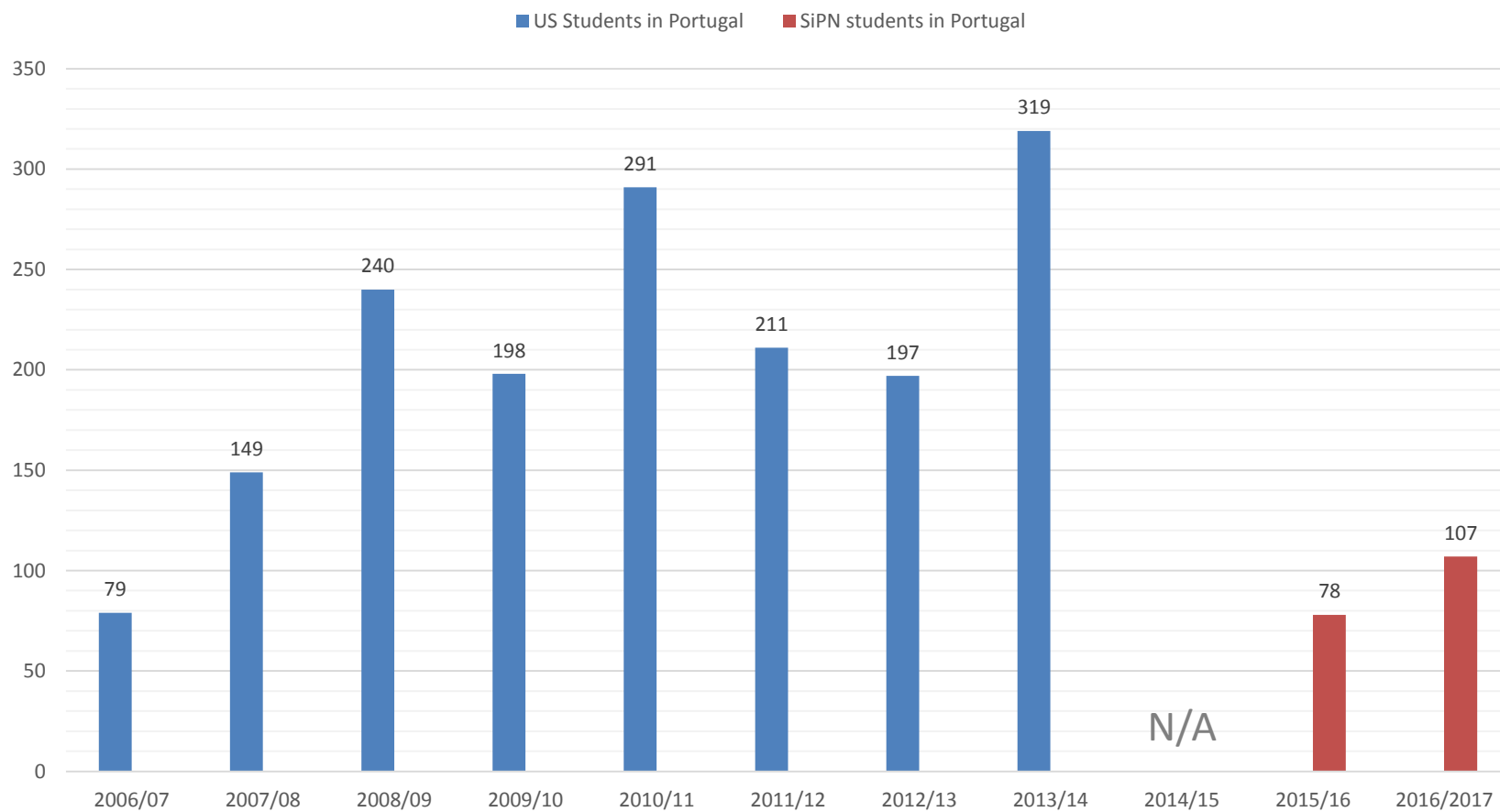


# It's a Network!

What makes SiPN unique is the fact that students can choose classes from any of the 4 member universities in our Lisbon network. The infographic below gives you an idea of how close each school is to one another and the SiPN student residence.



## US students in Portugal VS SiPN students in Portugal

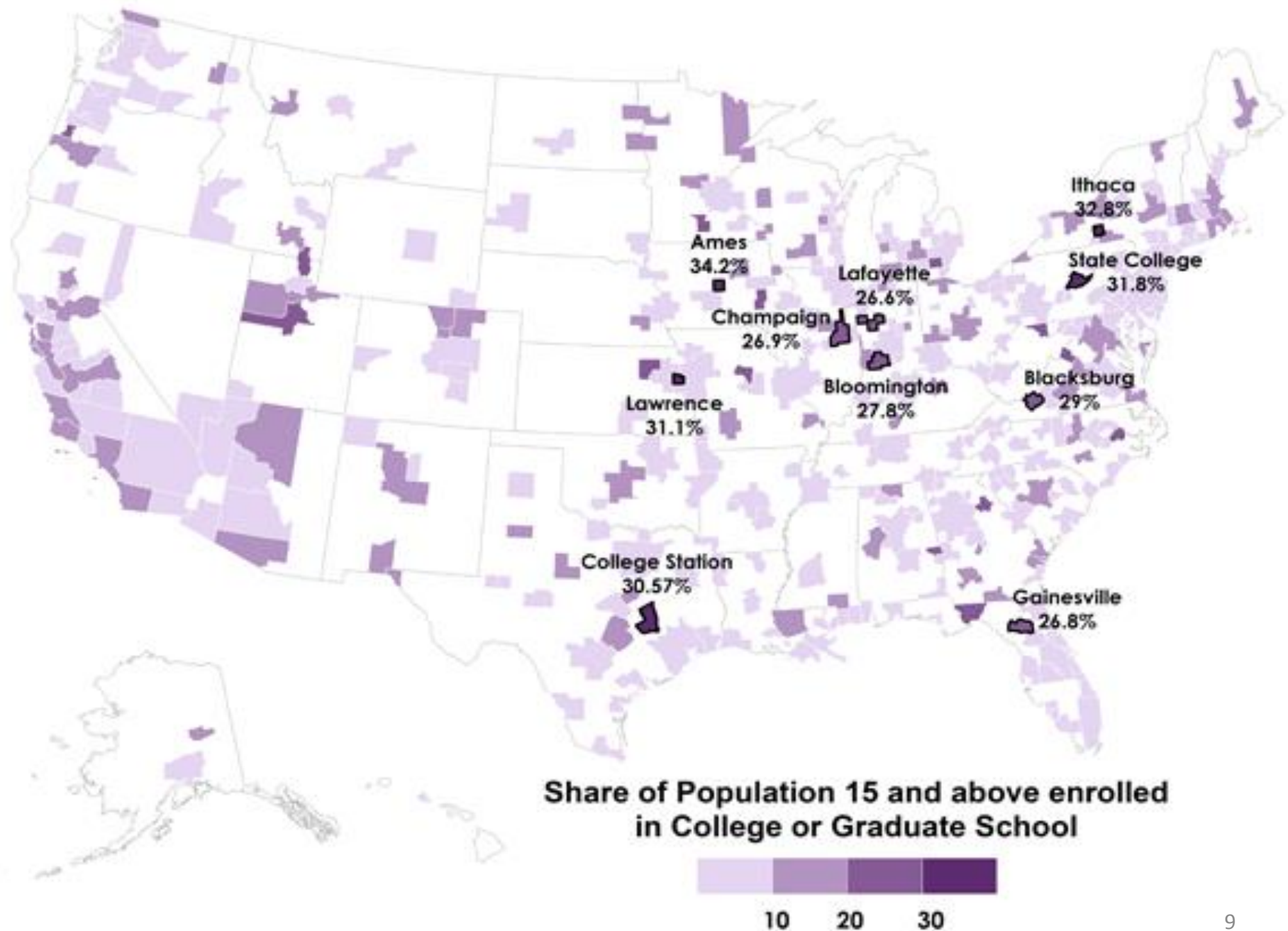


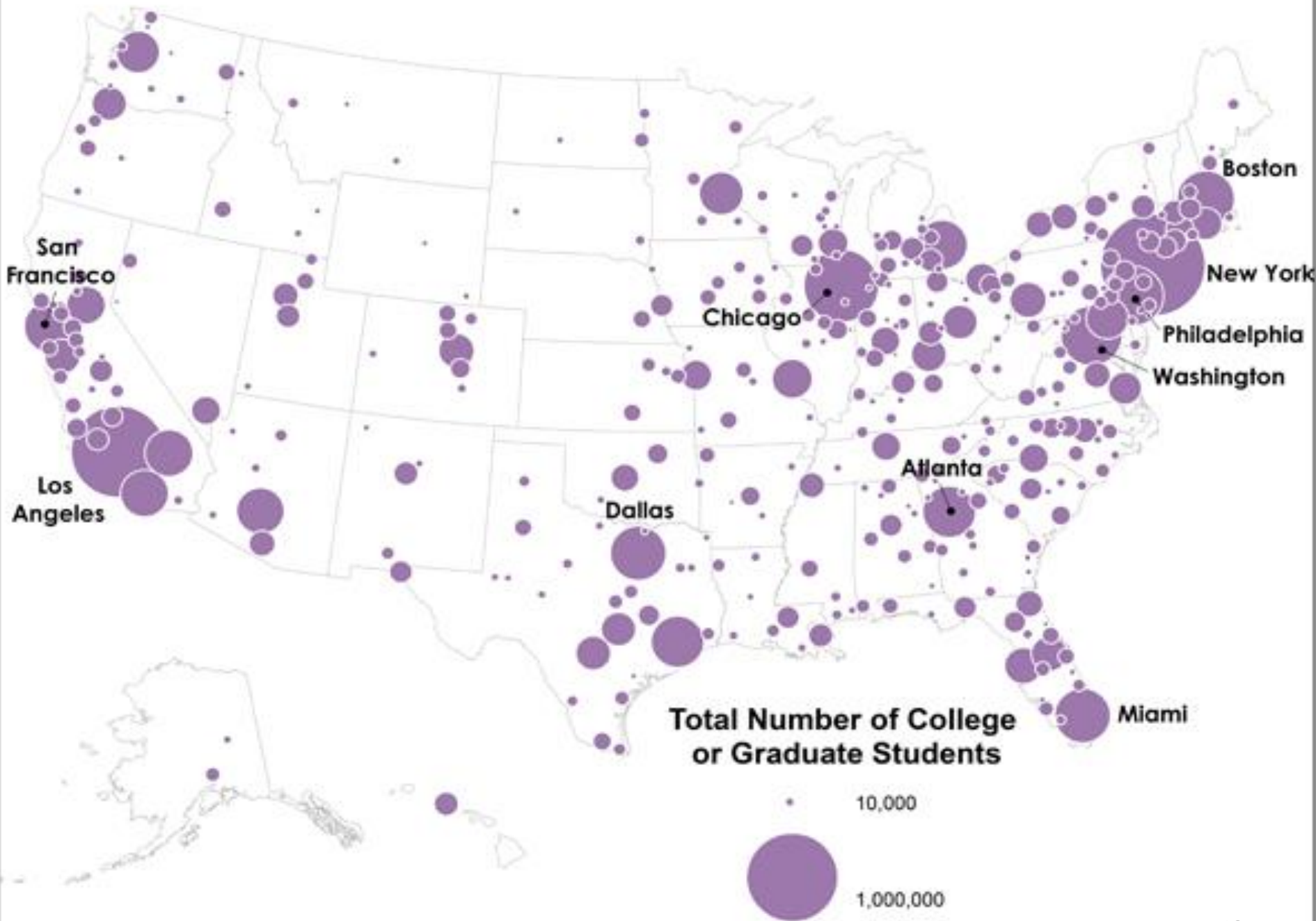
# The main tasks of this conference

- collect practices and experiences of embedding culture inside universities
- showcase examples of successful cooperation between universities and cultural institutions
- Discuss how universities act as agents in the development of cultural activities in the cities

My contribution: In what ways is the US case instructive and how is SiPN aiming to contribute to these goals?

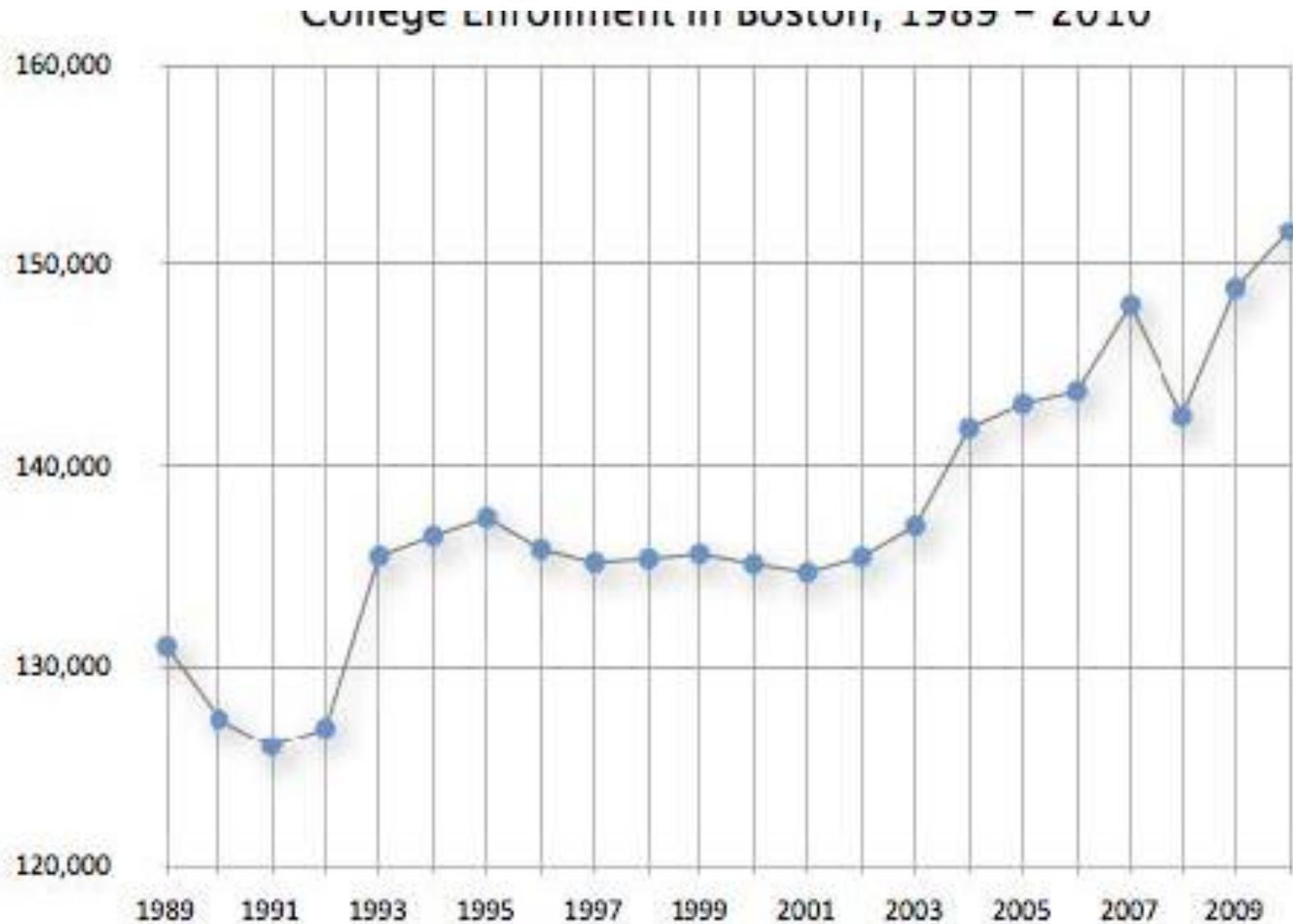




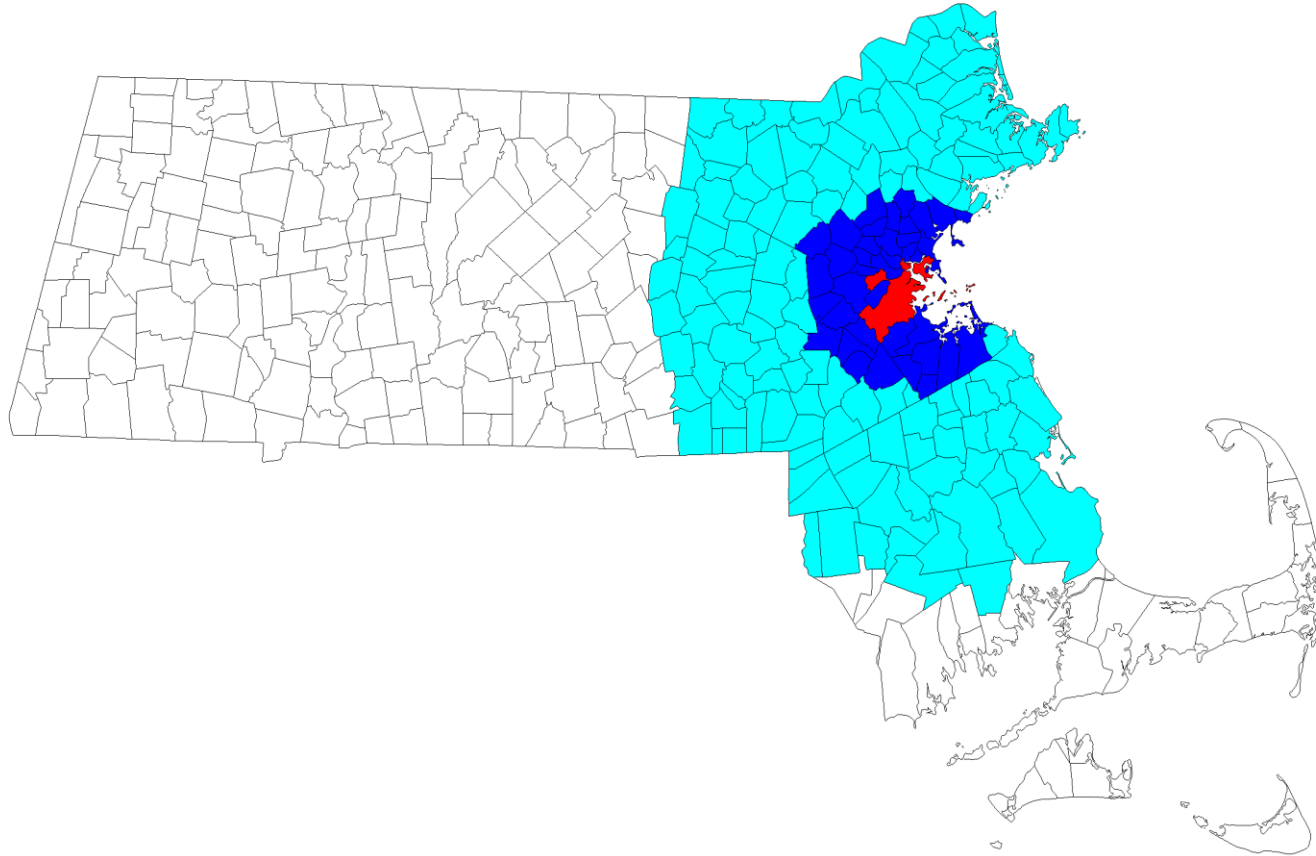


# Boston as Comparative Case

## College Enrollments, 1989-2010



# Metro Boston as Comparative Case



# University – City – Region – Internationalization Strategies

- Economic benefits seem clear for city/regions, despite concerns over tax exempt nature of the universities
- Universities benefit by recruiting more global talent (STEM and grants, univs as R&D centers for corporate and venture capital, larger recruitment pool)
- Individual-level benefits for the student

# Cultural Investments → Urban Renewal?

- Providence Renaissance (RISD, Brown, JWU, PC)
- New Bedford's Star Store as Urban Anchor (UMD)
- Yale and New Haven as Counterexample



# “Live It/ Leave It Better”

- SiPN is concerned about how our students can give back to the city that hosted them
- Service-Learning Activities
- Internships for academic credit
- Social Responsibility Project “Live It/Leave It Better”

## HOUSING

STUDY TOURS AND CULTURAL  
AGENDA

MULTICULTURAL LEARNING

VISITING FAMILY PROGRAM

SiPN BUDDY PROGRAM

TRAVELING OUTSIDE PORTUGAL

VOLUNTEER OPPORTUNITIES

GENERAL SAFETY &amp; INSURANCE

## Volunteer Opportunities

Volunteer during your time in Portugal and engage in a meaningful service experience. Give back to the community while making Portuguese connections and it could just be one of the best decisions you make while studying abroad!

**Volunteer Spontaneously Throughout the Semester with one of SiPN's partners, the *Lisbon Municipality Volunteer program*.**

Perks of the volunteer service:

- It's a great way to make personal connections in Lisbon, as you work alongside other Portuguese and international students;
- You might earn access to special discounts, such as vouchers and free entrance to events and concerts.

## How Do I Participate?

Just let us know before you depart, or during the first two weeks after you have arrived in Lisbon and the SiPN On-site Coordinator will put you in contact with our partners.

[f](#) [Tweet](#) [in](#) [G+](#) [+](#) Share



# Working with City and Civil Society Partners

- CML Volunteer Bank
- CML Study in Lisbon Program
- Local Arts & Culture Orgs
- Medicos do Mundo
- GRACE
- Leverage existing univ infrastructures
  - ISA, Museu Nacional de História Natural e da Ciência, etc.
- Thoughtful Curricular Design





## Urban Agriculture and Civic Ecology - (6 ECTS)

- Community Service Learning and “Design/Build” Studio: The course integrates an intensive, hands-on service-learning experience and community-based design project in an urban community garden in Lisbon.
- Students will have a community service learning placement in AVAAL, a Lisbon organization dedicated to promoting civic ecology and urban agriculture through school gardens and a community garden.
- The culminating experience is a team “design/build” project. We will use participatory action research methods to learn about gardeners’ knowledge, foodways heritage and needs. Informed with this knowledge, we will design and carry out a studio project working alongside local gardeners-- for example, building a new garden structure, permaculture spiral, or public art installation.