



Stéphanie Schott  
International Relations Office  
University of Luxembourg  
17 April 2018

# The University of Luxembourg: facts and figures

## A modern and dynamic institution

- ❑ Founded in 2003
- ❑ Today approx. 6400 students, thereof nearly 700 PhD students
- ❑ 12 Bachelor and 42 Master degrees
- ❑ 1800 employees, thereof 260 faculty members
- ❑ Belval: a brand new campus in the South of Luxembourg
- ❑ Ranked 179 in THE World University Rankings 2017/18 and 11 in THE Young Universities Ranking 2017



# The University of Luxembourg: facts and figures

## From the heart of Europe: An international and multilingual university

- ❑ Multilingual study programmes, using French, English, German
- ❑ 54% non-Luxembourgish students from 120 countries
- ❑ Staff from 85 countries
- ❑ Mandatory semester abroad
- ❑ International agreements with more than 100 universities worldwide
- ❑ Over 100 joint supervision agreements for PhD candidates



# Online Learning agreement - OLA

## Context

- 650 Outgoing + 250 Incoming students per academic year: approx.  
**2.000 learning agreements**
- Very short time frame for management of LA
- Objective
  - Decrease administrative workload
  - Increase efficiency for all involved parties

# Online Learning agreement - OLA



# Online Learning agreement - OLA

## Key facts about OLA

Strategic partnership -  
in line with

“Erasmus without paper”

Consortium

7 Partners (+ 100 HEI users)

Project duration

01.09.14 - 31.10.17 (Kick-off: Nov. 2015)

Public release

15<sup>th</sup> September 2016 at EAIE

Implementation at UL

Mandatory for incoming mobility in summer 2016

# Online Learning agreement - OLA

## Paper version

- Missing/ wrong information
- Waste of paper
- Waste of time

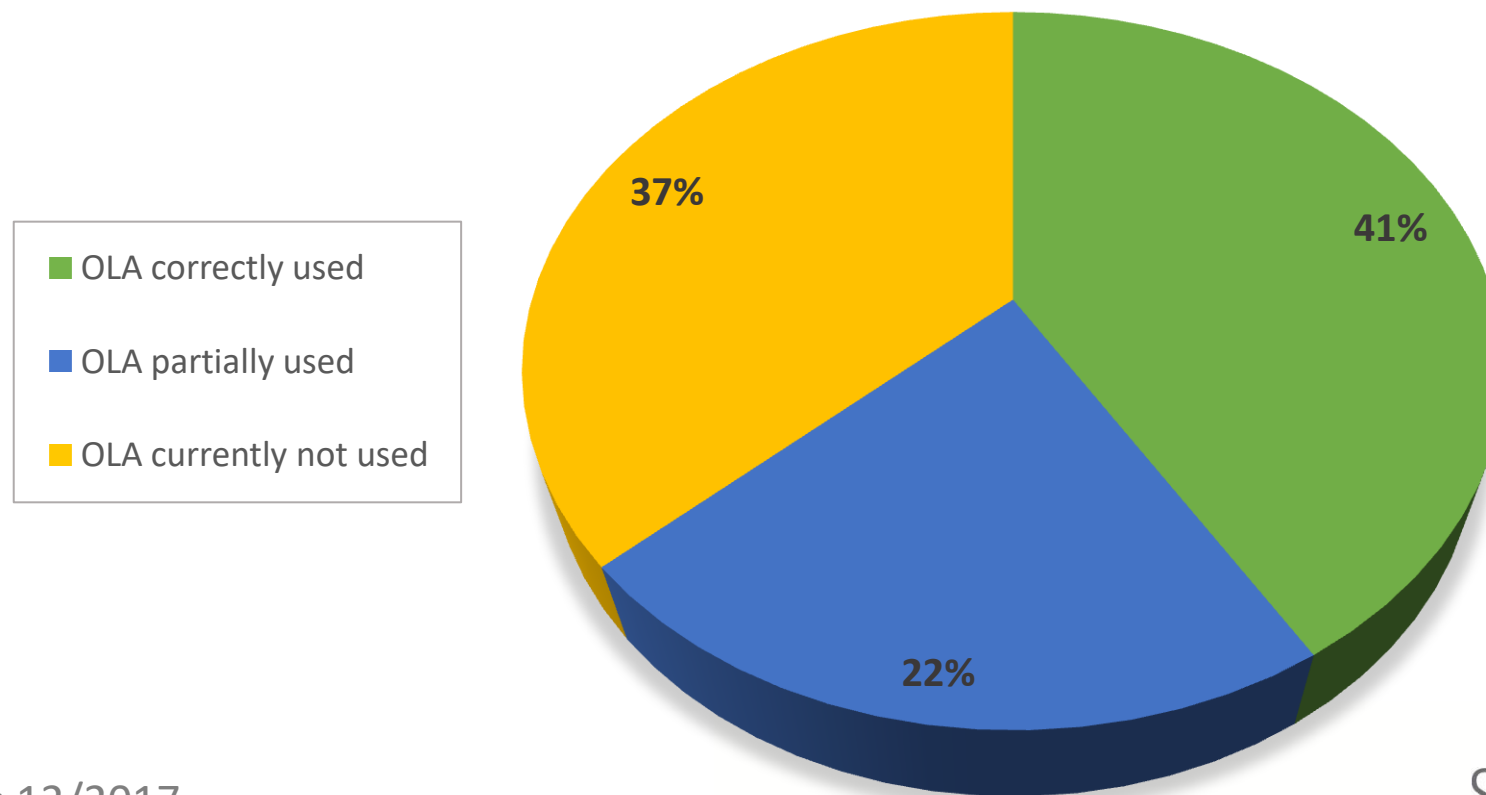


## Online version

- Digitised/ readable online version
- Back office upload (prefilling function)
- Simplifies management (Quick overview)
- Filters allow specific checks
- Automatic transmission accelerates procedure
- [Officially supported by European Commission](#)

# Online Learning agreement - OLA

## Use of OLA in 2016/17



UL survey: 12/2017

SEVE

SERVICE DES  
ÉTUDES ET DE  
LA VIE ÉTUDIANTE

  
UNIVERSITÉ DU  
LUXEMBOURG



# Online Learning agreement - OLA

## Difficulties encountered at UL

- Reluctance of partners
- Adapt workflows
- Link to existing tools
  - Online application
- No comments possible



## OLA satisfaction rate

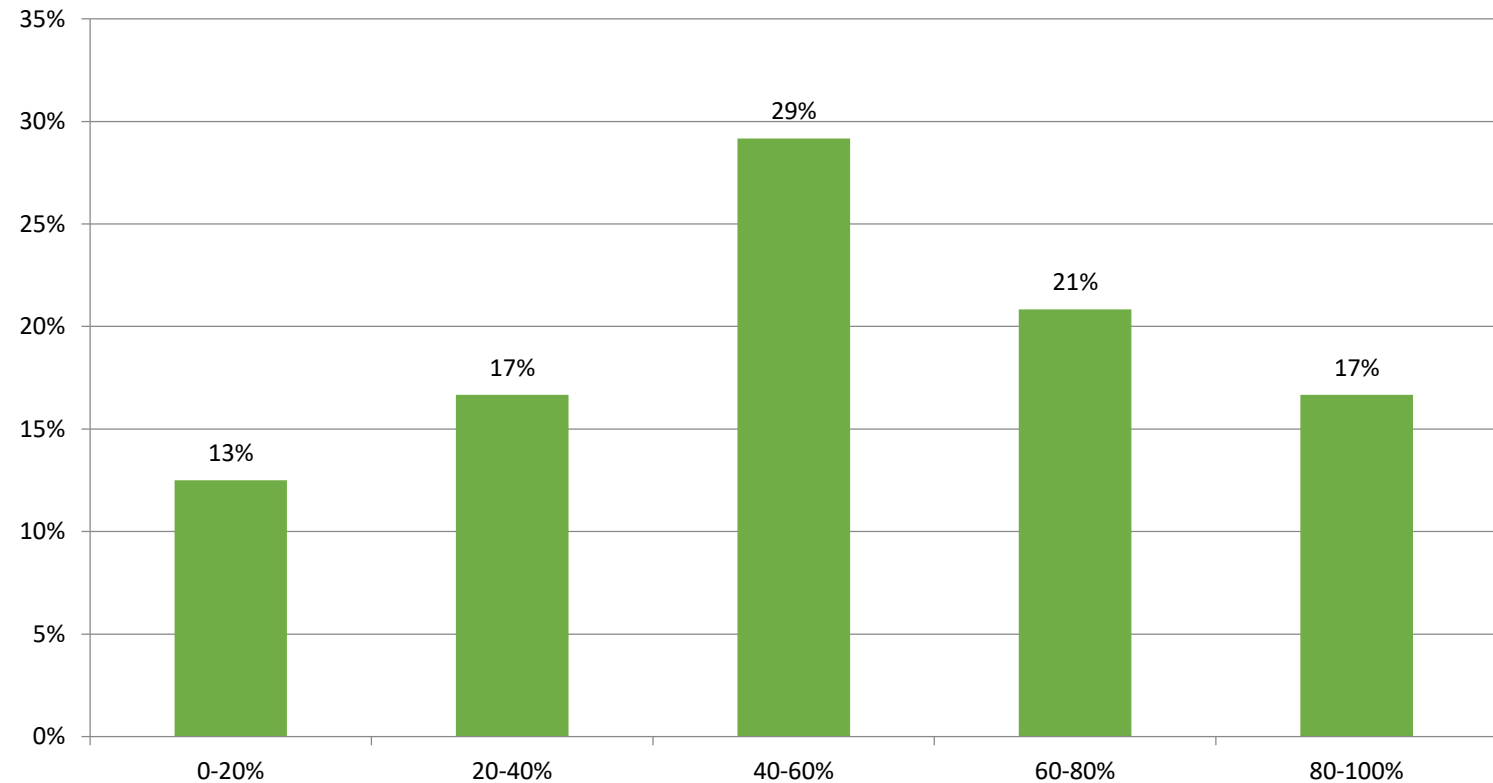
87%  
students

82 - 95%  
IROs

# Online Learning agreement - OLA

## Efficiency gains

**+400.000 hours of  
administrative work  
saved per year!**  
(across a population  
of 280.000 students)



# Online Learning agreement - OLA

## Involvement of the University of Luxembourg

### Upcoming features (follow-up project: OLA+ 2017/19) :

- Course catalogue implementation
- Comments/ counterproposals
- OLA for traineeships
- GDPR Audit
- Management of all OLAs via a Dashboard
  - ✓ Specific automatic mailings/notifications
  - ✓ Export of Excel files for statistics

# Online Learning agreement - OLA

## OLA+ project partners



## Erasmus+ App partners



# Online Learning agreement - OLA

## Contact at the University of Luxembourg

Marie-Anne HEYER

[marie-anne.heyer@uni.lu](mailto:marie-anne.heyer@uni.lu)

+352 46 66 44 6682

[www.learning-agreement.eu](http://www.learning-agreement.eu)