

*Financing interdisciplinary research.
The challenge to go beyond
institutional seed funding*

Prof. François Bussy

Vice-rector for Research

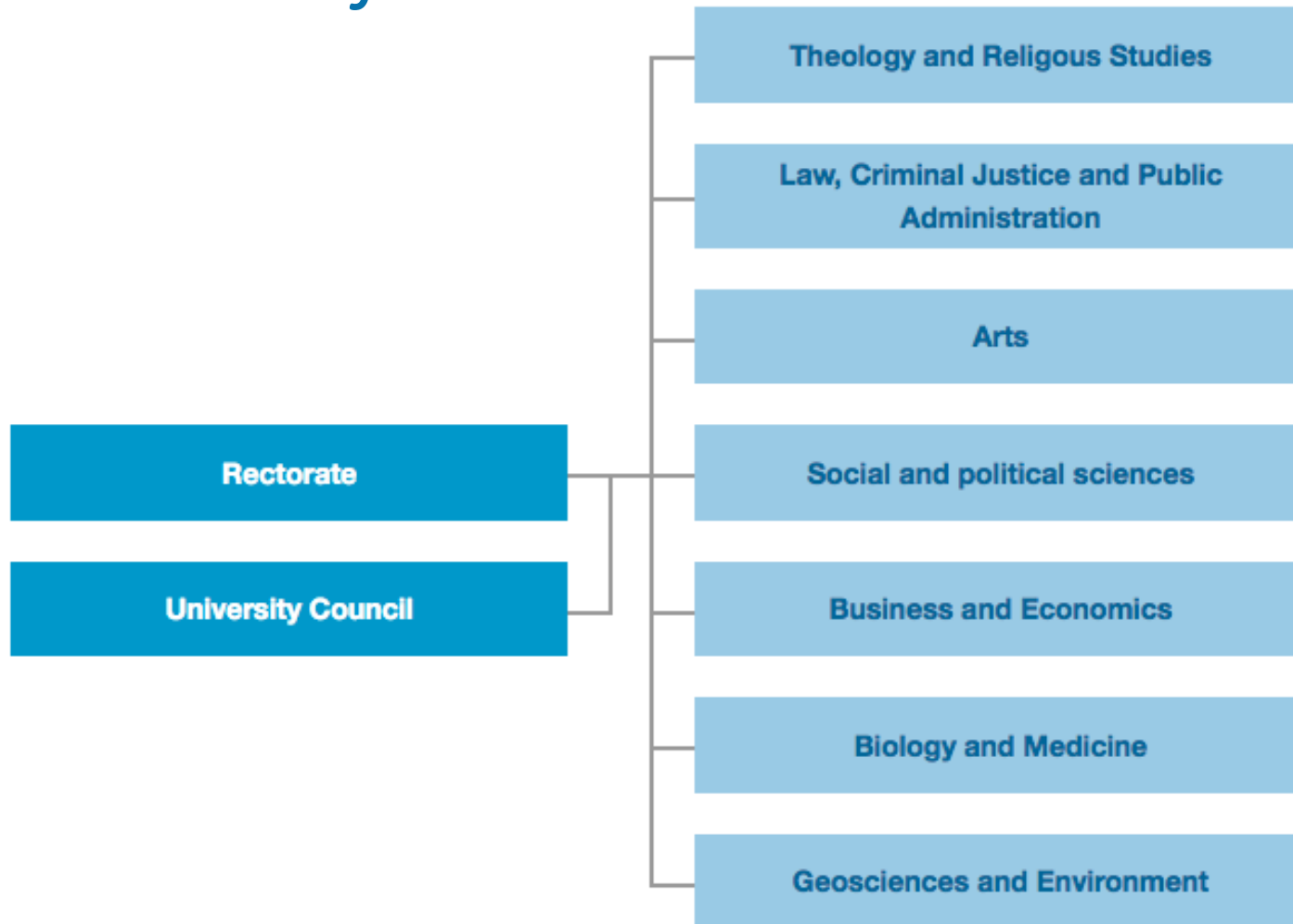
Dr. Iago Otero

Coordinator - Interdisciplinary Centre for Mountain Research

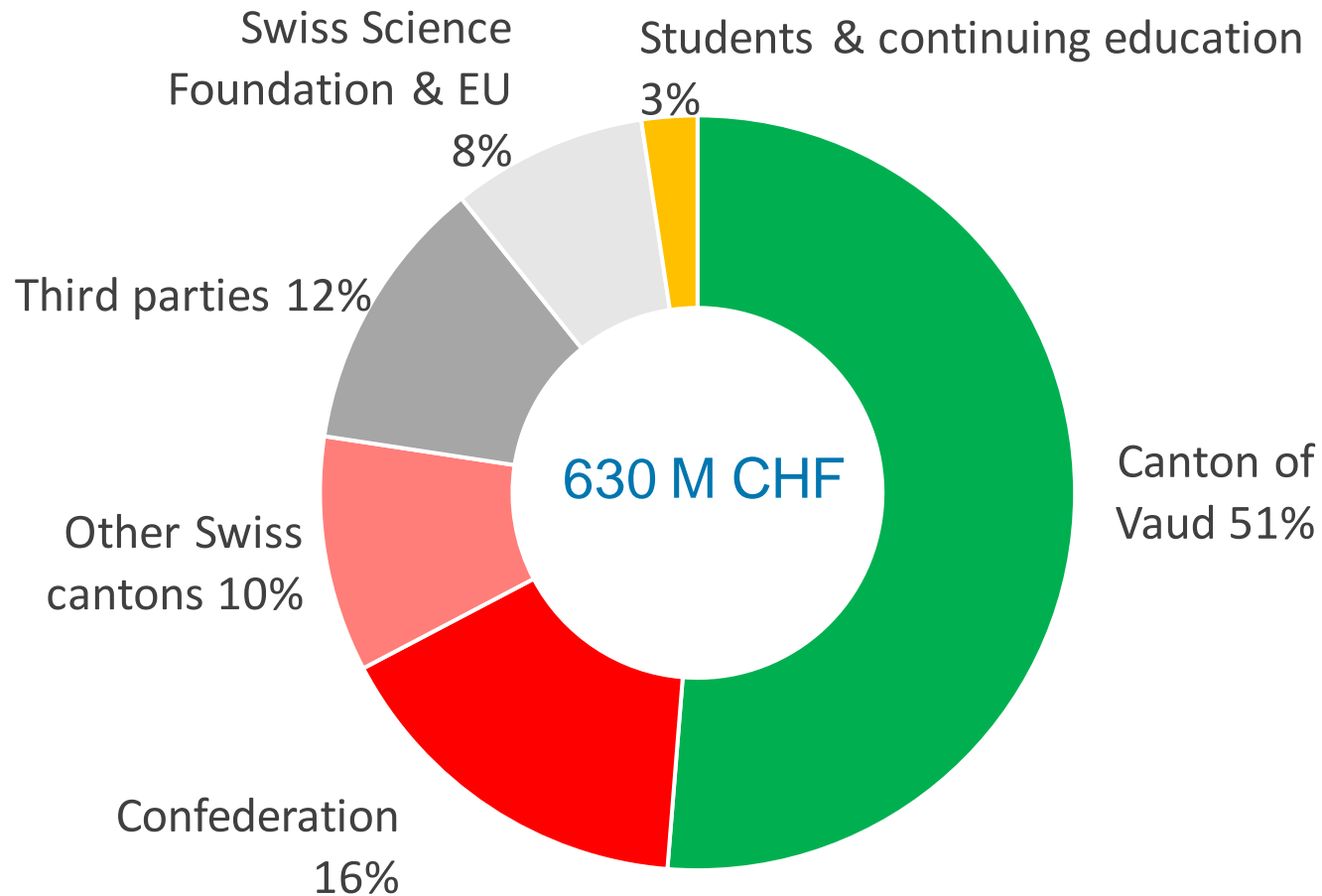
Unil

UNIL | Université de Lausanne

Organization of UNIL



Funding of UNIL



Source : UNIL RG 7.4/2018

Unil

UNIL | Université de Lausanne

Swiss National Science Foundation - SNSF

- Main external source of competitive funding in Switzerland.
- Mostly organized in disciplinary *Divisions*
 - I: Humanities and Social Sciences
 - II: Mathematics, Natural and Engineering Sciences
 - III: Biology and Medicine
 - IV: Programmes
 - Sinergia – interdisciplinary research (2-4 research teams)
 - R4d - Research on global issues for development

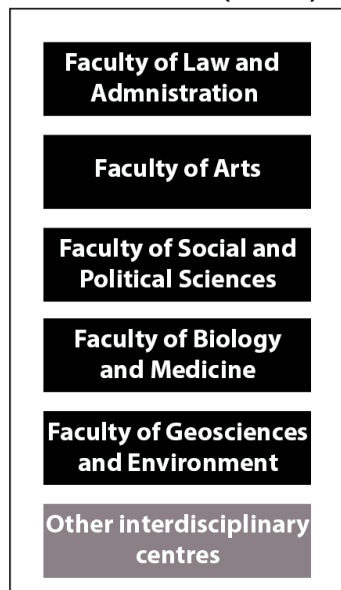
Interdisciplinary (interfaculty) research centres



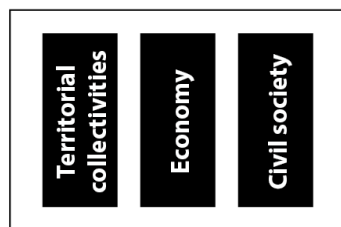
- Mountain
- Sustainability
- Sports
- Ethics
- Life courses and vulnerabilities

The Interdisciplinary Centre for Mountain Research

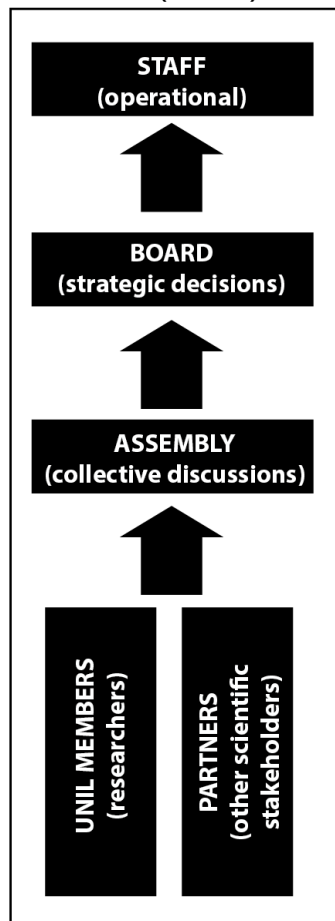
UNIVERSITY (UNIL)



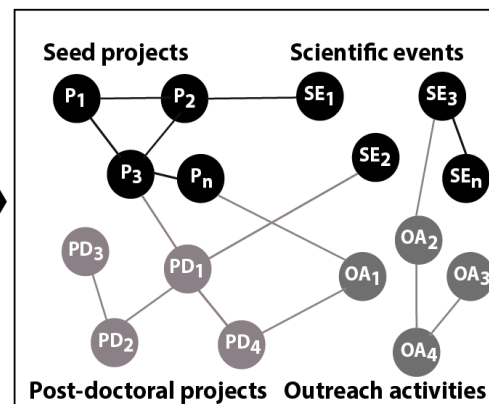
SOCIETY



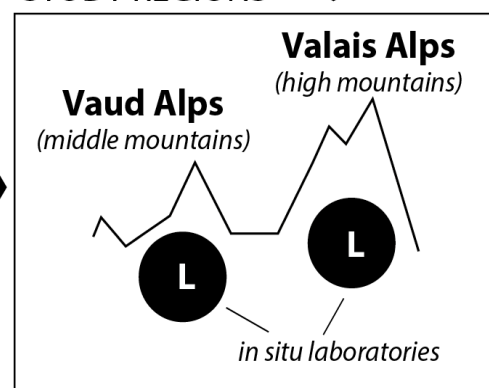
CENTRE (CIRM)



PROJECTS

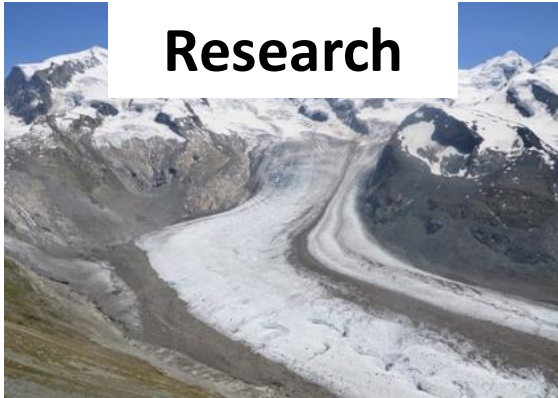


STUDY REGIONS



Activities

Research



Interdisciplinarity



Communication



- Post-docs (5)
- Seed projects (4/y)
- Seminars and conferences
- Invited researchers
- National and international network

- Post-doc workshops
- Seed project workshops
- Open workshops
- Brown bag lunch seminars
- Self-evaluation

- Conference series
- Organisation of events
- Newsletter
- Regular contact with media
- Local network

Some of our challenges



- Inter- and transdisciplinarity is perceived as a risk for researchers in the current discipline-oriented competitive context.
- Integration of heterogeneous scientific and non-scientific points of view into collaborative research that contributes to sustainability.
- For early stage researchers it is specially difficult to apply for external competitive funding to continue inter- and transdisciplinary research.

Proposals to improve funding programs



- Stronger reward of inter- and transdisciplinary experience in evaluation criteria.
- Sufficient funding to participatory methods.
- Allow projects to redefine goals and methods during their course.
- Have "contingency funds" for unplanned ideas and needs.
- Flexibility regarding project delays.
- Improve incentives for early stage researchers.
- Fund self-evaluation and transfer of lessons learnt.

Thank you for your attention!



Unil

UNIL | Université de Lausanne