

# 12th EU Research Liaison Officers meeting - EIT

Elena Billi-Rizza, Inmaculada Lopez

07/11/2017

[www.upmc.fr](http://www.upmc.fr)

**UPMC**  
UNIVERSITÉ PARIS  
SORBONNE UNIVERSITÉS

# UPMC: facts and figures



- University Pierre et Marie Curie has come to embody French excellence in science and medicine.
- The University is made up of seven Research and Training Units in Engineering, Mathematics, Chemistry, Physics, Earth and Environmental Sciences, Life, Biodiversity and Medicine.
- 32,000 students, of which 6,400 are international
- 10,500 in staff, of which 8,200 are in research structures
- 18 sites across 4 regions in France

# UPMC: facts and figures



- UPMC and Paris Sorbonne Universities will merge on January 1<sup>st</sup> 2018 to create Sorbonne University: this comprehensive institution broadens domains in science, engineering and medicine to include the arts, humanities, social sciences.
- By bringing together the best talent in a wide array of disciplines, Sorbonne University represents an important change in French higher education, in that it offers new transversal academics and expertise.

# UPMC in the European community



Our goal: to be among the main actors to build the ERA and the EHEA:

1. European Networks: UPMC is a committed member of UNICA, LERU, EUA
2. Education Programs: UPMC is continuously developing a more dynamic European component to its degree programs, encouraging student exchanges within the European Union
3. Research Programs: UPMC's research strategy directly supports European priorities and UPMC is one of France's most active participants in EU-sponsored research projects.



# Organisation



1. Politics and Strategy: Vice-Presidents
2. Support departments:
  - Education Programs: DRI (international students mobility, hosting foreign faculty researchers, implementation of training projects, and supporting the establishment of international partnerships.
  - Research Programs: DR&I

# DR&I: Research and Innovation Direction



About 90 people working on:

- EC research programs
- Other national or international funds (public agencies, foundations, ...)
- Private contracts
- Technology transfer
- Intellectual property
- Human resources
- Financial affairs
- UPMC research affairs



# European affairs : missions



Increasing UPMC's involvement in European projects, especially in pillar 1 programs, coordinations and KICs :

- Participating to the French Programmes committees and NCP and European networks (UNICA, LERU, ...)
- Ensuring a strategic watch of European research programmes
- Informing and helping researchers to find funding and training them
- Training (and collaborating with) all the concerned University offices in order to increase the university professionalism
- Providing assistance to researchers in the drafting of proposals, the negotiation and the financial, administrative and legal management of projects

# European affairs : numbers



## People:

- Scientific officers: 9 (strategy, management, projects design and review)
- Contract engineers: 16 (6 for EU)
- EU project managers: 3
- Financial affairs: 5

**FP6:** 63 collab. Projects + 29 MCA

**FP7:** 160 collaborative projects + 21 ERC + 37 MCA

**H2020 (to date):** 40 collaborative projects + 28 MSCA + 15 ERC

Success rate: 22% (on evaluated projects)





# European affairs: some considerations



- UPMC is ranked 1<sup>st</sup> University in France, but 58<sup>th</sup> in Europe (in August 2017)
- Project based approach is not yet well developed among UPMC researchers
- UPMC research impact depends on relations with public and private partners together with our capacity to link research with education and innovation



The [European Institute of Innovation and Technology \(EIT\)](#) is an independent EU body set up in 2008 to provide a unique instrument able to foster innovation throughout Europe across various challenges.

The EIT priorities are addressed by its Knowledge and Innovation Communities (KICs), that bring together

- Businesses actors (industries and SMEs),
- research centers and
- universities

They carry out a whole range of activities that cover the entire innovation chain:

- training and education
- research and innovation
- business



The EIT's first three KICs were launched in 2010:

Climate-KIC: addressing climate change challenges;

EIT Digital: generating world-class ICT

KIC InnoEnergy: tackling sustainable energy.

2014:

EIT Health: improving quality of life for European citizens and sustainability of health and social care systems.

EIT Raw Materials: ensuring the accessibility, availability and sustainable use of raw materials for the economy and citizens.

2016

EIT Food: ensuring a climate-resilient and sustainable global food value chain.

EIT Manufacturing: strengthening and increasing the competitiveness of Europe's manufacturing industry.

2018

EIT Urban Mobility: providing sustainable solutions for urban mobility.

- Why ?
- What ?
- How ? (example EIT Health)
- Attention : financial management and organisation



UPMC is the first French University in H2020 participation rankings, but:

- UPMC strongly believes in EIT approach
- UPMC wishes to strengthen its private partnerships, in particular in ICT and Health
- UPMC wishes to increase its participation in H2020 pillar 2 projects
- KICs projects success rate is considerably more interesting than other programs

UPMC is currently a member of 3 KICs:

- EIT DIGITAL since 2009 , first grant in 2010, membership fee since 2017 : 25 000€
- EIT Climate-KIC since 2011, membership fee since 2015 : 25 000€
- EIT Health since 2014; first grant in 2015, membership fee since 2015 for 50 000€ and now 75 000€

# EIT@UPMC: How ?

- UPMC Vice-Rector for Europe and International partnerships has strong relations with the EIT HQ
- UPMC faculties and research community is interviewed very soon when a new KIC is planned in order to check an eventual interest
- Should it be the case, the Vice-Rector, helped by a UPMC Senior European Affairs Officer and in relation with the Ministry, start consulting the national panorama to check what is going on.
- UPMC decides its position and starts building the “project” with the partners, always in a leadership position
- Once the KIC funded, all the requested personnel is hired or missioned in order to insure a good management and research community involvement

# EIT@UPMC: Example – KIC Health

## Core and Associated partners

### UK / Ireland



### Belgium / Netherlands



### Spain



### France



### Scandinavia



### Germany



### InnoStars





# What are our mission and challenges?

EIT Health promotes entrepreneurship and innovates in healthy living and active aging, with the aim to:

## Improve Healthcare

Innovate in the treatment and management of chronic diseases linked to aging

Contribute to improve Healthcare systems

## Promote Healthy Living

Self-management of health and Lifestyle

Primary prevention

Innovations for well-being

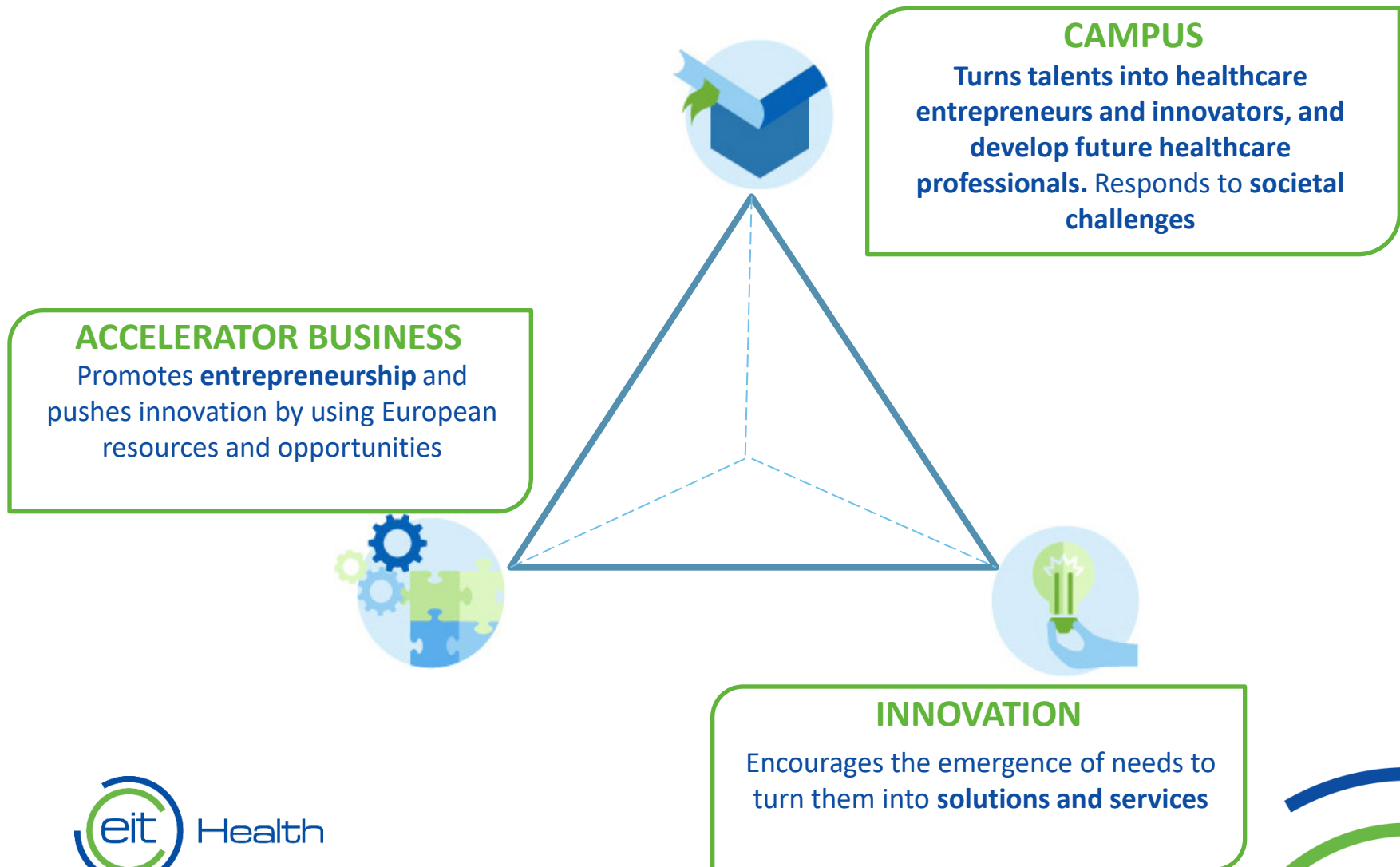
## Support Active Aging

Encourage social innovation and occupational health to preserve seniors' autonomy as long as possible

## Enabling technologies

Better access to innovative technologies in life science via a translationnel approach in the value chain of health technologies

# How to work together? Through projects



# How does Campus pillar work?

## To support the knowledge development and know-how

- Students
- Citizens / Patients
- Researchers
- Future entrepreneurs
- Medical professionals

## To build excellence training programmes

- Initial education** : Licence, master, doctorate
- Ongoing training** : MOOC, Summer school, Short courses  
E-Labs, training
- Ad'hoc programme** : Exemple : City festival - Marathon de Nice

## To increase knowledge and skills in all sectors to solve health challenges

- Innovation** : How to professionalize the innovation process
- Future health**: From bench to bedside
- Entrepreneurship**: How to support entrepreneurship
- Health evolution**: Development of healthcare systems

# How does Accelerator Business pillar work?

**Supports Industries creation and partner's growth**

Startups  
SMEs

**Increases the transfer from ideas to products and services available for citizens / patients through access to networks and business operators**

Competitive clusters and innovation clusters  
Incubators in Europe  
Living Lab, Test Beds  
Angels networks ( Business Angels, Corporate Venture)  
Market experts (market coach)

Every year, several challenges are giving **fundings and adapted support** for

Projects leaders  
Startups  
SMEs



# How does Innovation pillar work?

**Energizes this health ecosystem thanks to innovation** in response to societal challenges

- To improve health
- To promote healthy living
- To support active aging

**Funds multidisciplinary projects** to launch new products, solutions & services

- Real life data
- Sleep
- Lifestyle intervention
- Improving health systems
- Treatment of chronic diseases

**Supports market access and develops new economic models** through collaborative projects

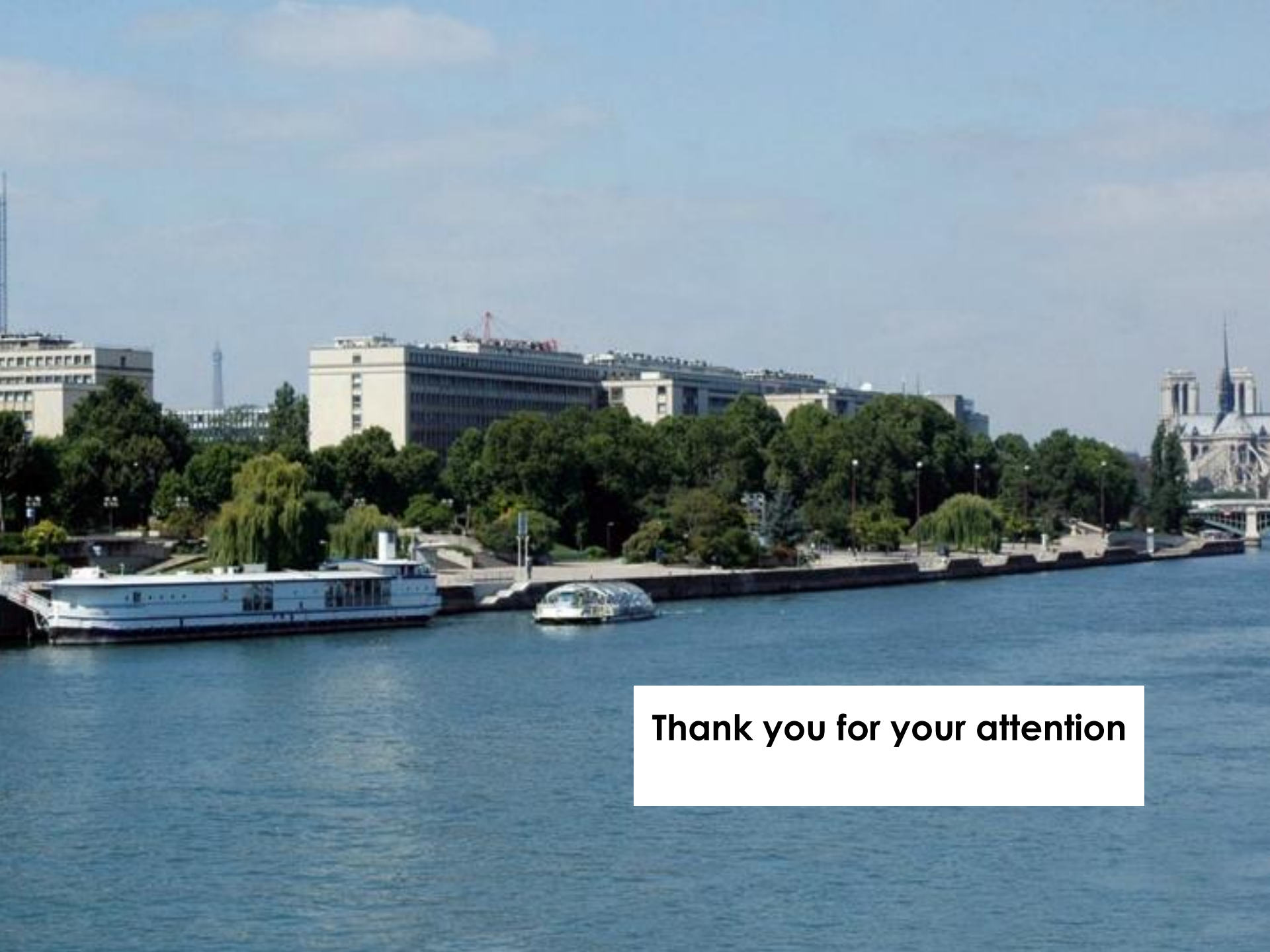
- Innovation by design** (focused on citizen's needs)
- Innovation by idea** (focused on solutions research)

- Financial issues:

- Financial follow-up by project and by task, by year (even in multiannual projects, there is a budget by year)
  - Cost report at the beginning of each year (same time that the end of the financial year)
  - Yearly CFS since EIT funding higher than 325 000 € for the whole KIC program – (feed-back from 2016 CFS)
  - KCA (KIC complementary activities) cost report every 4 year
- Specific platform for each KIC

- Coordination issues:

- Huge diversity in the calls – to know who can answer them
- Coordination between internal UPMC services but also intersectorial (startups ....)
- EIT funding (EIT grant to the KIC): 25% of multiannual KIC budget : need of multiple co-fundings to be able to justify 175%:



**Thank you for your attention**