

CHARM-EU



CHallenge-driven
Accessible
Research-based
Mobile
European
University

Co-funded by the
Erasmus+ Programme
of the European Union



UNICA EDULAB EUROPEAN CONFERENCE

European Universities Alliances as piloting arenas for the future of European degrees,

Meritxell Chaves, CHARM-EU Alliance Manager



CHARM-EU



CHallenge-driven
Accessible
Research-based
Mobile
European
University

Co-funded by the
Erasmus+ Programme
of the European Union



Content

1. **CHARM-EU as a test bed**
2. **Challenges**
3. **Questions for the discussion**

Reconciling Humanity with the Planet by creating the university of the future

CHARM-EU



CHallenge-driven
Accessible
Research-based
Mobile
European
University

Co-funded by the
Erasmus+ Programme
of the European Union



1. CHARM-EU as a test bed

Reconciling Humanity with the Planet by creating the university of the future



CHARM European University (CHARM-EU)

(Challenge-driven, Accessible, Research-based, Mobile European University)



University of Barcelona (UB)



Trinity College Dublin (TCD)



Utrecht University (UU)



Eötvös Loránd University, Budapest (ELTE)



University of Montpellier



Expanding....



UNIVERSITAT DE
BARCELONA



Trinity College Dublin
Coláiste na Tríonóide, Baile Átha Cliath
The University of Dublin



Utrecht University



EÖTVÖS LORÁND
UNIVERSITY | BUDAPEST



UNIVERSITÉ DE
MONTPELLIER

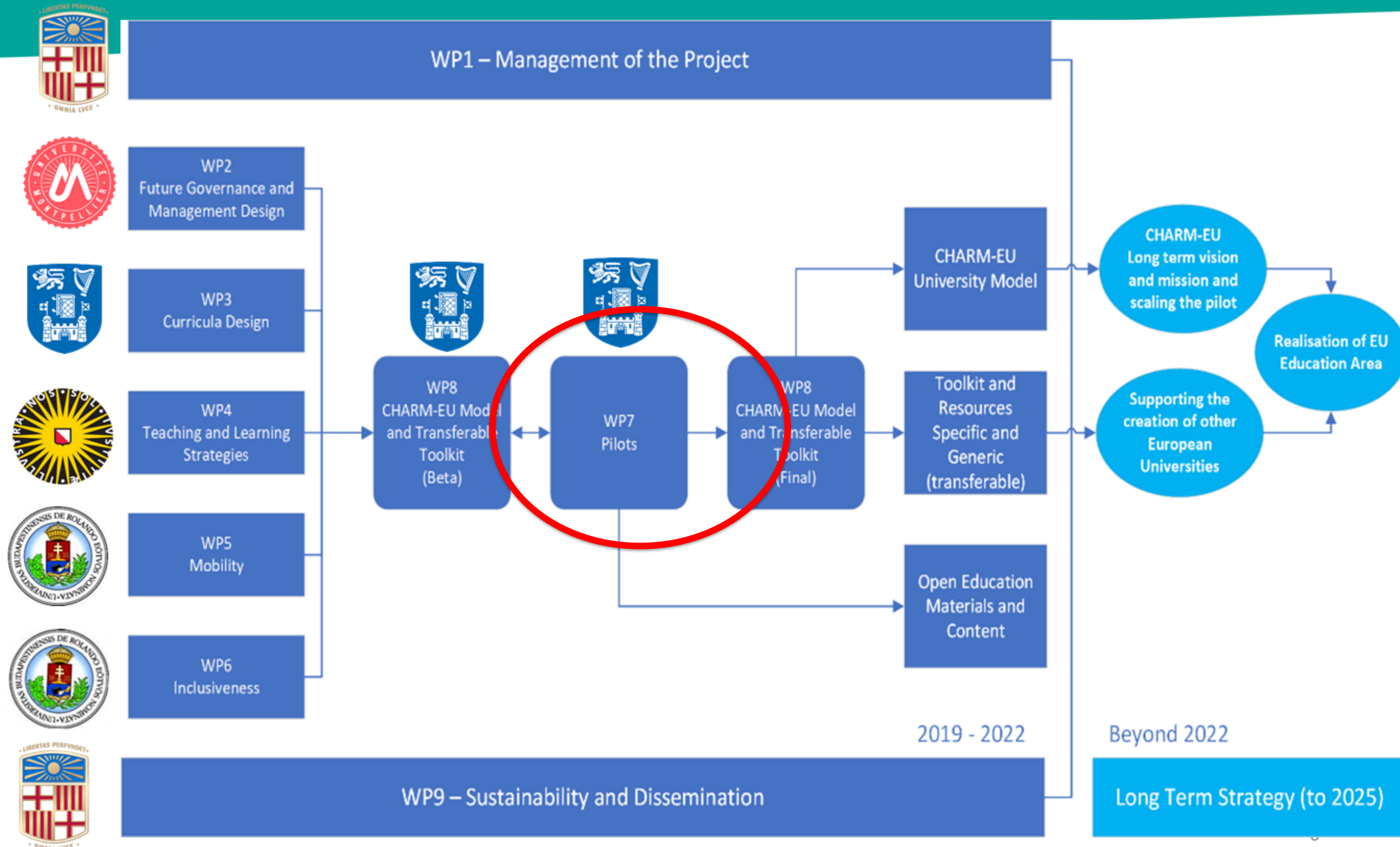


Åbo Akademi



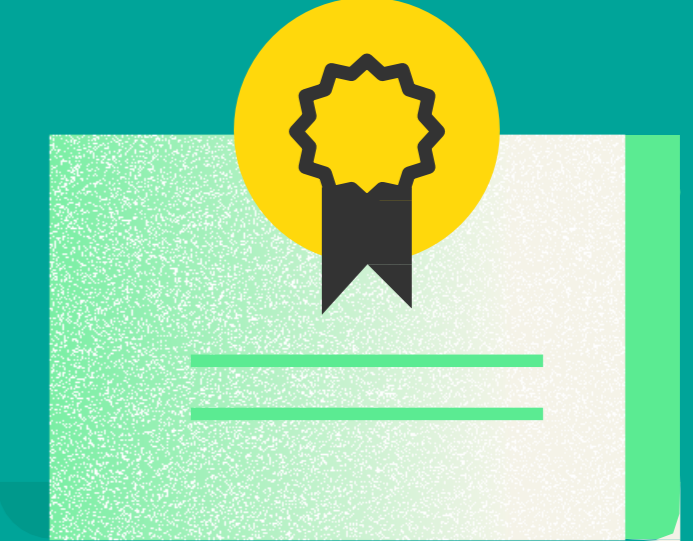


The Master's programme in the CHARM-EU approach





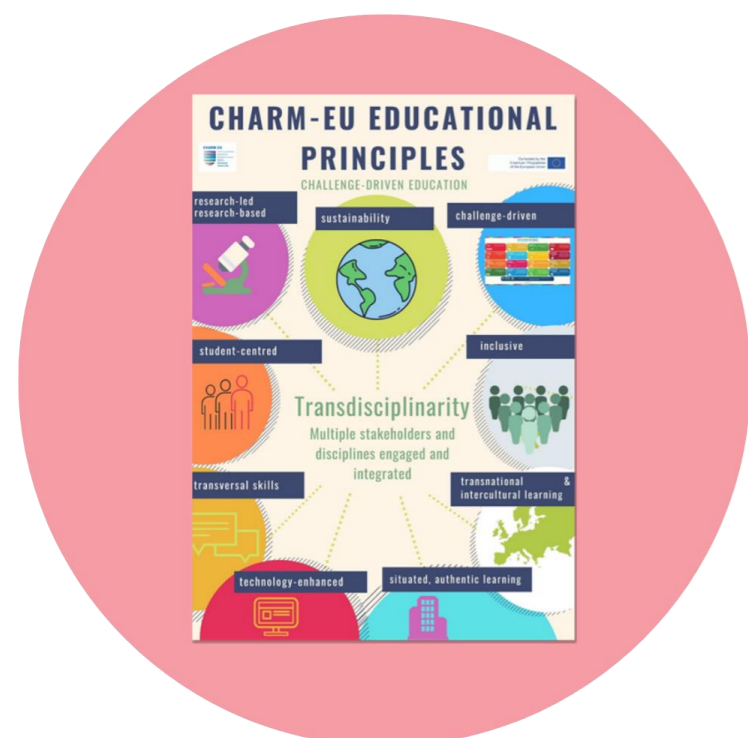
About the Master and the innovation



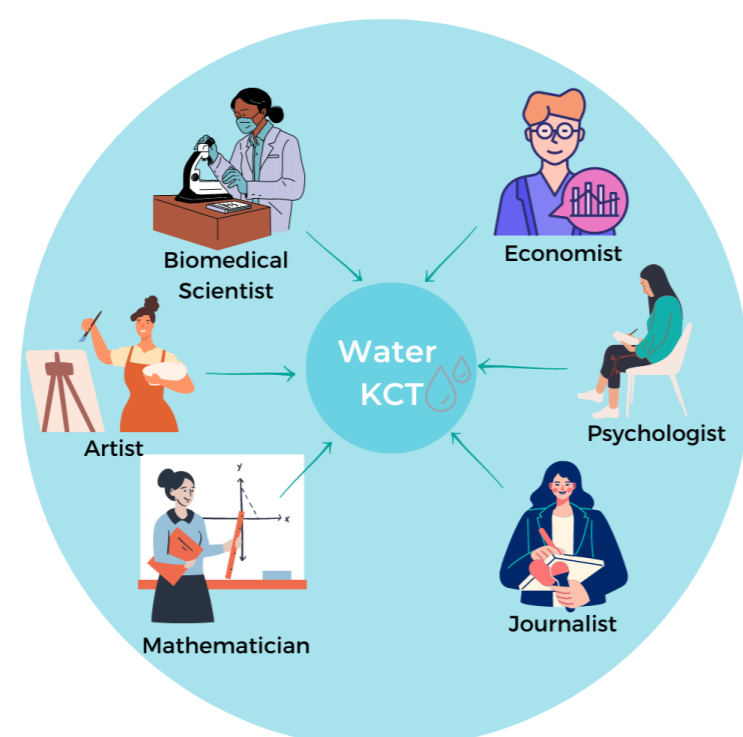
- ✓ Joint degree: one award/one parchment
- ✓ 90 ECTS
- ✓ Two tracks: 18 months
- ✓ Unique tuition fees
- ✓ Unique admissions and registration process
- ✓ Balance student assignment among the five campuses
- ✓ Specific academic rules and regulations
- ✓ Transdisciplinary: knowledge creating teams
- ✓ Challenge-based and student centered
- ✓ Hybrid and synchronic delivery
- ✓ New ways of assessment
- ✓ Technology enhance
- ✓ Mobility embedded (virtual, physical one semester, BIP's)
- ✓ Flexible: challenges selected by the students
- X Multilingual (not enough time to complete)



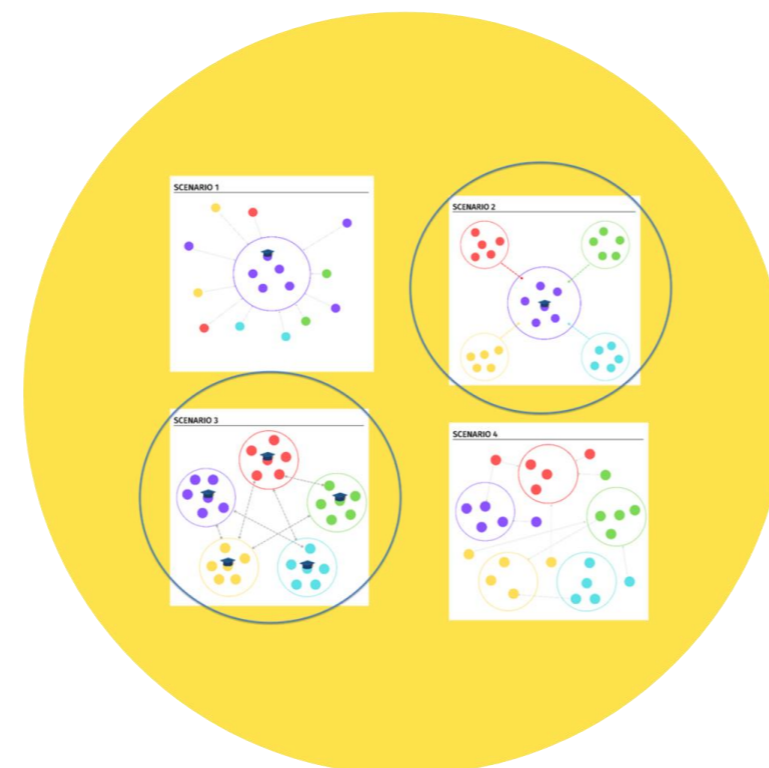
The innovation journey: building from scratch to fit the purpose



Values and Educational principles and curriculum design



**The people:
Transdisciplinary and intercultural Knowledge
Creating Teams**



**Innovative teaching and learning strategies
challenge-based**



The tools



Professional development



The Master's



CHARM-EU



CHallenge-driven
Accessible
Research-based
Mobile
European
University

Co-funded by the
Erasmus+ Programme
of the European Union



2. Challenges

Reconciling Humanity with the Planet by creating the university of the future



Challenges (I)

NATIONAL LEVEL

- Design and accreditation process. Different interpretation/implementation of the Bologna process. European Approach can work but needs trust and generosity at the national level translated into more flexibility.
- Different national funding and fees systems
- Different rules and regulations systems
- Not all the countries are attractive to the students



Challenges (II)

THE POINT OF VIEW OF THE STUDENT

- Excellence and inclusion. How can we conceal both? And mobility
- Not all the students are prepared for so much innovation.
- Diversity of disciplines.
- Full-time programme. Full-time students?
- Strong tendency of the students to follow the classes on-line
- Testing



Challenges (III)

THE POINT OF VIEW OF THE ACADEMIC STAFF

- Academic staff need training and support during the design and during the delivery: educationalist and teaching assistants.
- Diversity of disciplines and cultures
- Different “mental” grading systems
- The governance of the programme



Challenges (IV)

THE POINT OF VIEW OF THE PROFESSIONALS

- Joint Virtual administrative office: dealing continuously with the institutional and national differences in the processes
- Traditional mobility (Erasmus+) doesn't fit the new design
- Not everyone is prepared for working in an innovative environment
- Clash with the institutional processes

CHARM-EU



CHallenge-driven
Accessible
Research-based
Mobile
European
University

Co-funded by the
Erasmus+ Programme
of the European Union



Which is the student target for this type of programmes?

Reconciling Humanity with the Planet by creating the university of the future

CHARM-EU



CHallenge-driven
Accessible
Research-based
Mobile
European
University

Co-funded by the
Erasmus+ Programme
of the European Union



How this innovation generate impact?

Reconciling Humanity with the Planet by creating the university of the future

CHARM-EU



CHallenge-driven
Accessible
Research-based
Mobile
European
University

Co-funded by the
Erasmus+ Programme
of the European Union



How can the European Universities can help to harmonise this innovation at the national level?

Reconciling Humanity with the Planet by creating the university of the future

CHARM-EU



CHallenge-driven
Accessible
Research-based
Mobile
European
University

**MOLTES GRÀCIES
MUCHAS GRACIAS
FÒRÇA GRÀCIAS
MANY THANKS
GO RAIBH MAITH AGAT
HEEL ERG BEDANKT
MERCİ BEAUCOUP
NAGYON KÖSZÖNÖM
DANKE SCHÖN!**



[charm_eu](#)



[charm-eu](#)



[charm.eu](#)

www.charm-eu.eu

info@charm-eu.eu