

# ESU

EUROPEAN  
STUDENTS'  
UNION

[www.esu-online.org](http://www.esu-online.org)



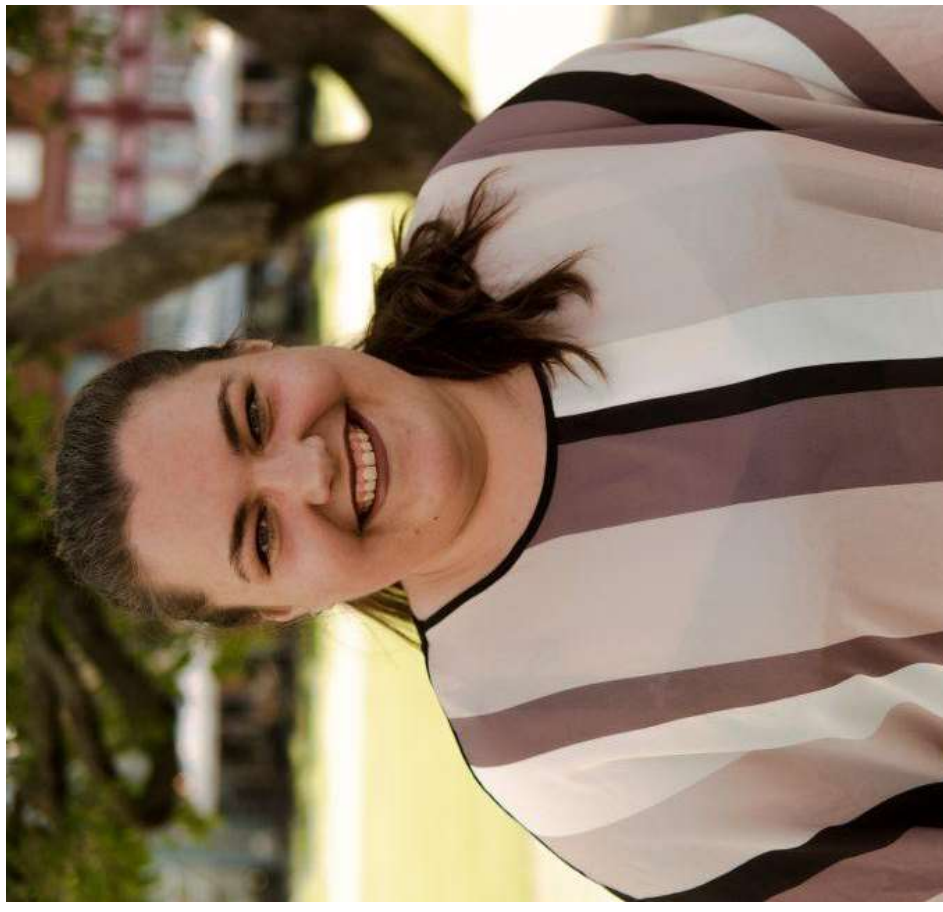
# Campus and the city: through the lens of the international students

Katrīna Sprōge, Vice President of ESU  
[katrina.sproge@esu-online.org](mailto:katrina.sproge@esu-online.org)  
Sarajevo, 26/04/2023





- 2016 - 2018 Head of International Students' Council at Riga Technical University Student Parliament
- 2018 - 2020 International Affairs Officer at Student Union of Latvia
- 2020 - 2021 President of Student union of Latvia
- 2021 - 2022 Membership Coordinator for ESU
- 2021 - 2022 Member of the Council of Higher Education in Latvia
- 2022 - 2023 Vice President of ESU



The European Students' Union (ESU) is the umbrella organisation of **45 National Unions of Students (NUS)** from **40 countries**.

The European Students' Union's aim is to **represent and promote students' educational, social, economic, and cultural interests** at the European level to all relevant bodies, such as the **European Union, the Bologna Follow-Up Group, the Council of Europe, and UNESCO**.

ESU represents almost **20 million students** across Europe throughout its members.

## Sustainable cities and campuses for international students

Designed, built, and operated with the goal of minimizing its environmental impact while promoting social and economic sustainability.

- Accessibility
- Affordability
- Inclusivity
- Adaptability
- Efficiency



## Information accessibility

- Provide information materials prior to arrival in language international students understand, after arrival provide opportunities for orientation activities on campus and around city
- Assure the signs on campus (and in the city) are easy to understand and in multiple languages
- Ensure that international and domestic students have access to the same information
- Ensure accessibility of information, including for students with various disabilities and accessibility needs
- Train staff and faculty on how to create and provide accessible information and resources
- Seek feedback from members of the campus community about their experiences with information accessibility and make changes accordingly

## **Access to student support services**

- Ensure students are aware of the student support services available to them
- Eliminate language barriers when accessing the student support services
- Assure international students have the same rights and access to support as domestic students
- Provide training for staff to ensure they are ready to welcome international students and support them throughout the study period
- Assure access to mental health support services on campus

## **Accessible and safe environment**

- Ensure that the campus environment is physically safe and secure
- Take proactive steps in addressing and eliminating discrimination and bias within campus and beyond
- Provide training for staff and students regarding multicultural competencies, diversity and inclusivity
- Address mental health concerns related to cultural adjustment and other stressors that international students may experience.



## **Accessible and affordable housing**

- When possible, provide affordable student housing to international students
- Assure the student housing fits accessibility needs of all students
- Offer support when finding off-campus student housing, especially guidelines on where to look for housing, how to avoid scams, safe neighborhoods, transport connections, etc.
- Don't segregate domestic and international students when providing spaces in on-campus student housing
- In cities that have major housing crisis, be aware of the number of students admitted to the study programs

## **Adaptable and fit-for-needs campus**

- Design the campus fit for the needs of the students that will be using the campus
- Gather continuous feedback from students and assure closed feedback loop
- Adapt to the ever changing needs of students
- Foster community on campus - Create opportunities for international students to connect with each other and with domestic students, to promote a sense of belonging and support for international students.
- Encourage international students to join student organizations that cater to their interests and cultural backgrounds.



# Campus and the city: through the lens of the international students

Katrīna Sprōge, Vice President of ESU  
[katrina.sproge@esu-online.org](mailto:katrina.sproge@esu-online.org)  
Sarajevo, 26/04/2023

