



UNICA DAYS

2026 BRUSSELS



WELCOME TO BRUSSELS!

PRACTICAL INFORMATION FOR PARTICIPANTS



www.unica-network.eu

HELLO

BONJOUR HALLO



Welcome to Brussels, a city at the crossroads of Europe that brings together cultures, languages, and ideas from across the continent and beyond!

As home to European institutions, international organisations, and a vibrant academic and cultural scene, Brussels offers a unique blend of history, innovation, and everyday life. And of course... it's a city where delicious delicacies are crafted and enjoyed every single day.

This short guide provides practical information, local tips, and insights to get around in the context of your participation in the UNICA Days 2026.



BRUSSELS: A CAPITAL OF MANY THINGS

CAPITAL OF BELGIUM

Brussels has grown from a 10th-century fortress town founded by a descendant of Charlemagne into a metropolis of more than one million inhabitants.

CAPITAL OF DIVERSITY

Did you know that Brussels is the second most cosmopolitan city in the world? The Brussels-Capital Region is home to 184 nationalities. It's the most cosmopolitan city in Europe, with almost 40% of its residents being foreign nationals.

CAPITAL OF BEER

Belgium produces more than 1,000 varieties of beers, and many come with customized glasses in which only that type may be served. Try the real sour gueuze beer: it gets its unique taste from a natural brewing process that is typical for the area around Brussels.

CAPITAL OF EUROPE

Brussels serves as capital of the European Union, hosting the major political institutions of the Union.

CAPITAL OF CHOCOLATE

Ever since the Brussels chocolatier Jean Neuhaus invented the praline 100 years ago, the city has been at the forefront of chocolate!

CAPITAL OF WAFFLES

Brussels waffles can be easily differentiated from Liège waffles by their regular shape: they are also crispy and light whereas the latter are denser and sweeter.

CAPITAL OF FRIES

Despite their name, the origin of French fries is actually attributed to Belgium. Being probably the most popular forms of “street food”, they are served with a large variety of sauces. Our advise? Try the traditional Belgian *andalouse*.



VENUES

Conference Venues

European Parliament
Rue Wiertz 60, 1047 Brussels
Room SPINELLI 1G2

University Foundation
Rue d'Egmont 11, 1000 Brussels
Room Cattier (ground floor)

Welcome Reception

25 Feb 2026

University Foundation
Rue d'Egmont 11, 1000 Brussels
Salon (ground floor)

Dinner

26 Feb 2026

TBC
XXXXXXXXXXXXXXXXXXXXXXXXXX



ARRIVING IN BRUSSELS



AT BRUSSELS INTERNATIONAL AIRPORT

Brussels International (Zaventem) Airport, BRU (www.brusselsairport.be) is situated in Zaventem, 14 km outside the city centre.



BY TRAIN

The airport train station is located below the Arrivals Terminal (Level -1). Up to 4 trains per hour connect the airport to Brussels North, Brussels Central and Brussels Midi stations. Information on the schedule of trains can be found on the Belgian Railways website (www.belgiantrain.be), where you can also buy tickets online. Enter BRUSSELS AIRPORT as departure station. The first train departs at 5.27 a.m. and the last one - at 0.27 a.m.

-On your way from the Airport: Buy your ticket online, at the ticket desk or in one of the vending machines before boarding.

-On your way to the Airport: Buy your ticket online, in one of the SNCB vending machines located at every train station. Don't throw away your ticket immediately upon arrival to the Brussels Airport. You will need to scan it at the automated access gates!

Price per ticket (2nd class): € 11.20



BY BUS

The bus station is located on level 0 –one floor down from the Arrivals Terminal. The STIB/MIVB Airport Line connects Brussels International Airport to the European quarter (housing the EU institutions).

Bus 12 takes you daily, from morning till evening, to the European district. The Airport Line offers a connection with the metro at Schuman (lines 1-5) and at Trône/Troon (lines 2-6).

You can buy your ticket from the GO ticket vending machines before boarding. The vending machines accept Maestro bank cards, credit cards and coins.

Fares

- Contactless payment: € 7,90
- MOBIB card : € 7,90
- Paper tickets: € 8,40

More information: <https://www.stib-mivb.be/travel/other-mobility-solutions/airport-line>. You can visit the mobile website m.stib.be or download the STIB application for iPhone or Android (available in English).



BY TAXI & RIDE HAILING COMPANIES

Taxis with a taximeter are available in front of the airport arrivals hall. The fare from the airport to the city centre of Brussels is approximately €45-60. Licensed taxis can be recognised by the blue and yellow emblem. You are advised to avoid unlicensed taxis! Mobility providers like Uber or Bolt are also available in Brussels. For these services, pick-up point is usually in P1 front parking, in a specific floor.

Since this might be subject to change, so to find your pickup location, always check the Uber app after you request a ride.

Ride-Hailing companies like Uber and Bolt also operate in Brussels but these services have a specific pick-up point. Exit the airport building by the front door. Cross the regular taxi lanes and enter the P1 front parking. Take the elevator up to the floor mentioned on your Uber application (4th of 5th).



AT BRUSSELS SOUTH CHARLEROI AIRPORT

Brussels South Charleroi Airport, CRL (www.charleroi-airport.com) is located in Charleroi-Gosselies, 66 kilometers south of Brussels.



BY BUS

The shuttle bus connects the airport with Brussels South Railway Station (Bruxelles Midi/Brussel Zuidstation; the bus stops at the intersection of Rue de France and Rue de l'Instruction). The shuttle bus leaves the airport every 20 minutes and the journey takes about 45 minutes, depending on the traffic. For the bus schedule please visit:

<https://www.flibco.com/en/timetable>

Buy your ticket online or from the sales desk just outside the airport building.

Fares: For 1 journey (single ticket): approx. € 19,90



BY SHARED SHUTTLE VAN

Door2Gate is a shared shuttle solution that will pick you up directly from a place you indicate and drop you off at the airport at the time you wish to arrive, and vice versa.

Fares: The price for one ride varies according to the time and date, starting at € 29.99 per person.



GETTING AROUND



PUBLIC TRANSPORT IN BRUSSELS


Circulating by metro, bus or tram is on the fastest way to getting around in Brussels!



You can easily purchase public transport tickets in numerous STIB/MIVB GO ticket vending machines. The machines operate in French, Dutch, and English, and accept Maestro and credit cards, and coins.




You can also pay contactless on the whole STIB-MIVB network. This means you can directly validate your trip using your debit card, credit card, smartphone or smartwatch. This option is cheaper than purchasing a single paper ticket from the vending machines.



Travel easily with your contactless bank card

Discover contactless payment




Ticket STIB-MIVB 1 journey

To travel once on the entire STIB-MIVB network.

2,30 €
2,80 € paper ticket

[→](#)




Ticket Brupass 1 journey

To travel once on STIB-MIVB, SNCB-NMBS (in 2nd class), LETEC and De Lijn networks in the Brupass zone.

2,70 €

[→](#)



Ticket Brupass 10 journeys

To travel on STIB-MIVB, SNCB-NMBS (in 2nd class), LETEC and De Lijn networks several times in the Brupass zone.

18,90 €

[→](#)



TAXIS & RIDE HAILING COMPANIES



Taxis Verts: To order your taxi, call at +32 (0)2 349 49 49 (service in French, Dutch, and English). Taxis Verts accept payments by credit cards.

Taxis Bleus: To order your taxi, call at +32 (0)2 268 00 00 (service in French, Dutch, and English)

IMPORTANT: You should only take taxis with on-board taxi meters. Once arrived at your destination, you can ask for a taxi meter receipt. The receipt will contain details of your trip and can be used as an expense note.

As an alternative to traditional taxis, ride-hailing companies like Uber and Bolt operate in Brussels, provided you have the respective apps.



BIKES & SCOOTERS (AND OTHER FORMS OF SHARED MOBILITY)



Renting a bike or a scooter has become a popular means of transportation in the city. You can easily find these, with the service provider duly identified. However, please note there is regulation associated to parking: specific drop zones define the areas where it is permitted to park.

Besides these, there are a whole other range of shared transport options available in Brussels, from shared mopeds to cars and carpooling.

You can find more about the companies operating in Brussels for bikes and scooters, as well as other means of shared transportation, here: <https://www.brussels.be/shared-mobility>.



MUST-KNOW

WEATHER

On average, Brussels has 200 days of rainfall per year, more than London and Paris. No matter how optimistic the weather forecast may be, you should always be prepared for rain in Brussels. Warm and sunny weather is rarely constant, and the humid air makes the weather feel often colder than it is.

LANGUAGES

Brussels operates as a bilingual city where both French and Dutch (Flemish) are official languages. Given the location of EU institutions in Brussels, English is also a widely spoken language.

TELEPHONE CODE

To call Belgium you have to dial 0032 + City Area Code (2 for Brussels if you call to a landline, not necessary for mobile phone numbers) + Phone Number.

CURRENCY & ATMs

The currency used in Belgium is €/EUR. Cashpoints/ATM can be found all over Brussels.

Some places working on a cash-only policy, sometimes debit and credit cards from foreign countries fail to work.

We advise you to always have some physical money with you.

TIME-ZONE

In Belgium, the standard time is Central European Time (UTC+01:00). Belgium observes Summer Time (daylight saving time) from the last Sunday in March (02:00 CET) to the last Sunday in October (03:00 CEST).

EMERGENCY

112 is the national emergency telephone number.



RECOMMENDED SIGHTS

OFF THE BEATEN TRACK

1



Galleries Saint Hubert

Designed in 1847, were the first commercial galleries in Europe and remain probably the most elegant; the 200-metre-long street of shops is covered by a glass dome.

2



Comic Strip Museum

The museum chronicles the history of Belgian comic books. Housed in a former department store, it exhibits examples of comic strips in French, Dutch and English

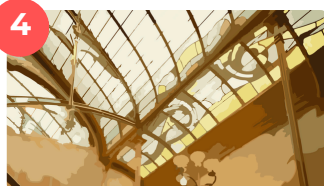
3



House of European History

The exhibition guides visitors through European history, from Europe's origins and evolution, to the descent into war and search for a better life.

4



Horta Museum

Victor Horta is one of the founders of Art Nouveau, The museum is located in the house that Horta designed for himself.

5



Musical Instruments Museum

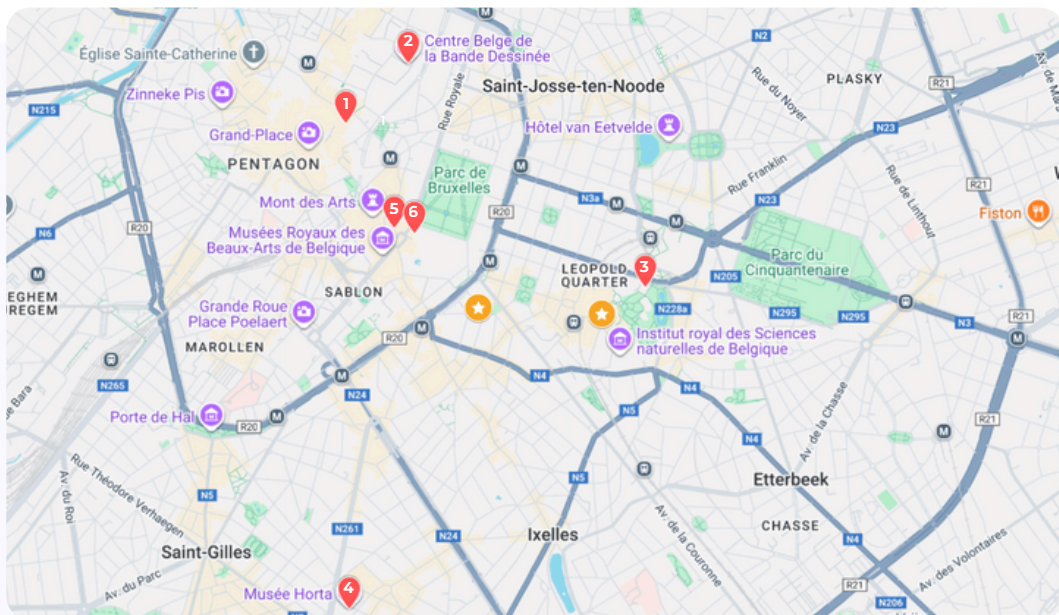
More than 1,500 instruments from around the world are exhibited in this museum, housed by one of the city's iconic Art Nouveau buildings.

6



VELvue Museum!

With seven different themed rooms, the museum offers an understanding of today's Belgium in a contemporary and original way.



★ Venues of the UNICA Days (Fondation Universitaire + European Parliament)



WINING AND DINING

Fin de Siècle: This cosy restaurant is perfect to start or end an evening. The menu focuses on Belgian classics (with a few international options), prices are affordable, and the atmosphere is warm and relaxed. Popular and lively, it's worth arriving early as they do not take reservations. Payment is cash-only.

📍 Rue des Chartreux 9, 1000 Bruxelles

Chez Léon: Mid-range restaurant at the end of Brussels' famous dining street, Rue des Bouchers. It offers quick service at any time of the day and serves traditional Belgian dishes at affordable prices. If you would like to try mussels with a pint of Belgian beer, Chez Léon is an excellent choice.

📍 Rue des Bouchers 1, 1000 Bruxelles

À La Mort Subite: A perfect place for your first Belgian beer tasting. The place's wood panelling, high ceilings, big marble pillars and mirrored walls will make you feel as if you have just been transported back in time.

📍 Rue Montagne-aux-Herbes Potagères 7, 1000 Bruxelles

DINING & WINING AREAS

Lively areas with a wide selection of restaurants and bars

Saint-Catherine | Flagey | Place Saint-Géry | Châtelain | Place Saint Boniface | Place Fernand Cocq | Place Jourdan | Parvis de Saint Gilles



ONLINE RESOURCES



VISIT BRUSSELS
<https://visit.brussels/en/>



BRUSSELS CAPITAL REGION
<https://be.brussels/>



BELGIAN RAILWAYS
www.b-rail.be



BRUSSELS TRAM, BUS AND METRO COMPANY (STIB)
<https://www.stib-mivb.be/index.htm?l=fr>



CULTURAL EVENTS INFO
www.agenda.be



BOOKING DESK BRUSSELS
<https://www.brusselsbookingdesk.be/>



BRUSSELSCARD
<https://visit.brussels/en/sites/brusselscard>



EXPERIENCE BRUSSELS
<https://visit.brussels/en/sites/experiencebrussels>



TOURISM INFORMATION DESK
<https://visit.brussels/site/en/article/tourism-information-desks>



www.unica-network.eu



The UNICA Days 2026 are an initiative from the UNICA Network in collaboration with the Delegation for Relations with Canada of the European Parliament, International Association of Universities (IAU) and Science | Business



Co-funded by the
European Union

Co-funded by the European Union. Views and opinions expressed are however those of the authors only and do not necessarily reflect those of the European Union or the European Education and Culture Executive Agency (EACEA). Neither the European Union nor the granting authority can be held responsible for them.